

SCOTLAND'S ROCK ART PROJECT

Newsletter 1: Autumn 2017



Welcome to our first newsletter for the Scotland's Rock Art Project! Over the next five years, the project team will be working with communities across the country to record, research and raise awareness of prehistoric rock carvings in Scotland. We will produce a newsletter each autumn and spring to summarise what we have been doing, to highlight forthcoming events, and to share information on Scotland's rock art.

Please contact us if you would like more information about the project.

WHO WE ARE

As this is our first newsletter, we would like to introduce our Project Team:



Tertia Barnett (Principal Investigator)

Tertia, who is based at Historic Environment Scotland (HES), has been researching and recording rock art in Britain and North Africa for over 20 years. She has worked on a number of community-led rock art projects, including the Northumberland Durham Rock Art Project, and Carved Stones Investigation, and also ran Scotland's Rural Past for the Royal Commission on Ancient and Historic Monuments of Scotland



Joana Valdez-Tullett (Research Assistant)

Joana, who is also based at HES, joins us from the University of Southampton where she has recently completed her PhD on Atlantic rock art. For the last 14 years she has worked with rock art of many periods (including Palaeolithic) and countries (Portugal, Spain, Ireland, England and Scotland). Recently, she has developed considerable experience of rock art recording using 3D digital techniques, such as RTI and Photogrammetry.



Stuart Jeffrey (Co-Investigator)

Stuart is based at the School of Simulation and Visualisation, Glasgow School of Art. He has extensive experience in digital recording and visualisation methods, and has recently been running the ACCORD project, co-producing 3D models with communities and exploring how people value their heritage.



Guillaume Robin (Co-Investigator)

Guillaume is based in the School of History, Classics and Archaeology at the University of Edinburgh. His background is in 3D recording and researching rock art in Irish megalithic burial monuments, and rock-cut tombs in Sardinia.



OUR FUNDERS, HOSTS, AND PARTNERS

The project is funded by the Arts and Humanities Research Council, and hosted by Historic Environment Scotland. We are very pleased to be working closely with our Project Partners – Archaeology Scotland, Kilmartin Museum, and North of Scotland Archaeology Society (NOSAS) – who will play an important part in the project and its legacy.



Archaeology Scotland



Kilmartin Museum



North of Scotland Archaeology Society (NOSAS)

GETTING STARTED

Since the project started in January, we have been busy making preparations so that we can launch our rock art recording programme by the end of the year.

RECRUITING COMMUNITY TEAMS

Most of the rock art recording will be carried out by trained Community Teams and individuals working in different parts of Scotland. We have already started raising awareness of the project and recruiting Community Teams, as shown in the list opposite. This will continue for the next 10-12 months through a programme of talks, training sessions, and supported fieldwork – you can see details of our forthcoming talks and training at the end of this newsletter.

OUR TALKS AND FIELD VISITS SO FAR

Who	Where	When
NOSAS	Strathpeffer	February 2017
ACFA	Glasgow	March 2017
Strachur Community	Strachur	June 2017
Argyll Members Group	Fife	June 2017
Whithorn Trust	Whithorn	July 2017
Lewis group	Lewis	July 2017
Bute Historical Society	Bute	August 2017



Stuart teaching NOSAS members about RTI

TRAINING SESSIONS

Our training sessions began in Dingwall and Drumore with NOSAS in May 2017. Around 20 NOSAS members met with Tertia and Stuart to learn about our recording approach and give to help us develop the methodology.

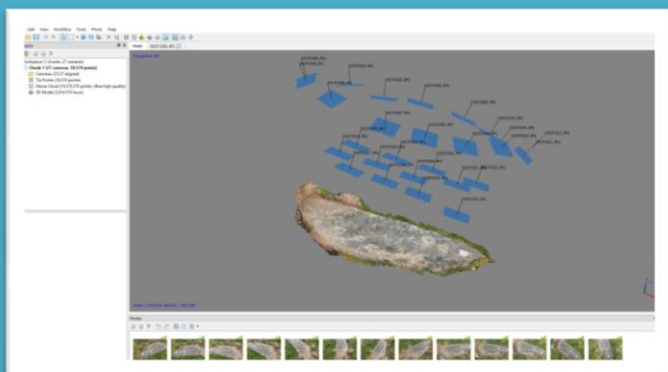
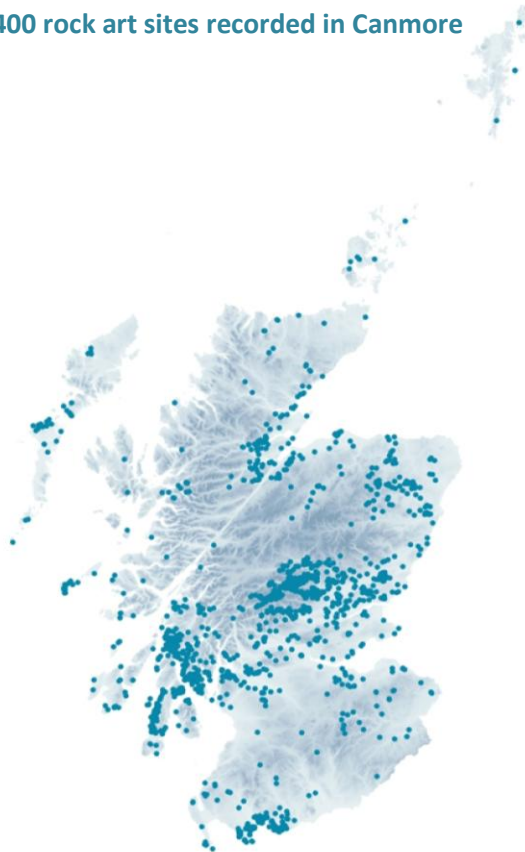


TESTING OUR RECORDING METHODS

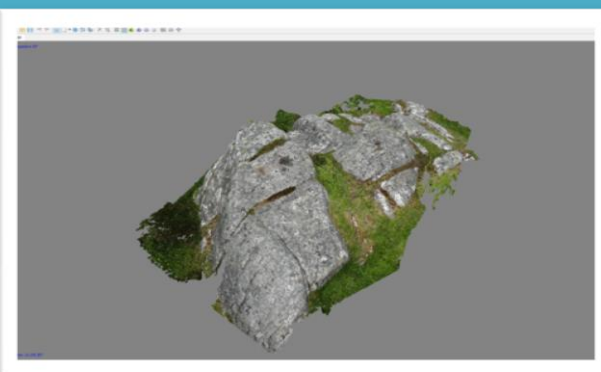
There are around 2400 prehistoric cup and ring marked rocks known in Scotland, and our aim is to find and record as many of these as possible. How we record rock art is crucial for research and public awareness, so we are developing a user-friendly, standardised method that will enable Community Teams to capture consistent, detailed information on every carved rock they locate. Our approach includes a text-based recording form, photography, and photogrammetry to create 3D models of the carvings and rock surfaces.

Our Project Partners, NOSAS, have been working hard trialling the recording method, and providing feedback on our Guidance Notes. NOSAS will continue testing over the next few months, so that we can launch our recording resources for everyone to use later this year.

2400 rock art sites recorded in Canmore



Position of cameras for 3D model creation. Drumore, by John Wombell (NOSAS)



3D model of Laggan Hill by Alan Thompson (NOSAS)



Training session with NOSAS at Drumore, May 2017

DEVELOPING OUR DIGITAL RESOURCES

We have appointed Fife-based Horisk-Leslie Development Ltd (www.horisk.com) to create our digital resources. These include an online form for uploading rock art records to our database, and a website for accessing and sharing information about Scotland's rock art. These resources will be ready to use by the end of the year.



HISTORIC ENVIRONMENT SCOTLAND

ÀRAINNEACHD EACHDRAIDHEIL ALBA

SCHOOL OF SIMULATION AND VISUALISATION THE GLASGOW SCHOOL OF ART



Arts & Humanities Research Council

BUILDING THE ROCK ART DATABASE

We are currently pulling together all known rock art records into our project database. This includes data from Canmore, regional Historic Environment Records (HERs), and private archives. The project database, which will be publicly accessible on our website, will lie at the heart of our recording and research. All new information gathered by Community Teams will be added to our database and, then shared with Canmore and HERs.



Ballochmyle, Ayrshire



Some geological features on the rock surface can easily be mistaken for cup-marks



CAN YOU HELP?

If you know of any rock art that **is not already** in Canmore or your local HER, please let us know!

You can check the Canmore database at canmore.org.uk, and your local HER on pastmap.org.uk, or via the relevant HER website (you can find their details at <http://smrforum-scotland.org.uk/her-contacts/>). If this is a 'new' carved rock, we would be grateful if you can send us as much detail as possible, including:

- an accurate grid reference (preferably using British National Grid and taken with a GPS)
- at least four photographs of the rock art and its location. It helps if you can photograph the carvings when there is low sunlight shining across the surface of the rock
- a short description of how to find the rock, and who to ask about access
- a short description of the rock and the carvings.

We will add this information to our database so that it can be visited and recorded in detail. You may find it helpful to look at our Guidance Notes on **Recognising Rock Art** (sent with this newsletter), as it is very easy to mistake natural features for prehistoric carvings – especially cupmarks!



GETTING INVOLVED

We have a number of talks and training sessions planned over the next few months. If you are interested in finding out more about the project, we would be very pleased to see you at one of our talks. If you are keen to work with us, and would like to come to one of our training sessions, please get in contact with us at the address below. Training courses are free to attend, but we are unable to reimburse you for travelling expenses. As places on training courses are limited, we particularly welcome people who are seriously considering taking part in the fieldwork programme.

If you would like to get involved but are not able to come to a talk or training event, please get in contact with us using the details below.

OUR FORTHCOMING TALKS

WHO	WHERE	WHEN
Kirkcudbright History Society	Kirkcudbright	September 2017
Inverary History Society	Inverary	January 2018
Bute Museum and Natural History Society	Rothesay Museum, Bute	February 2018
Kilmartin Museum and community	Kilmartin	March 2018
Appin Historical Society	Appin	March 2018

OUR FORTHCOMING TRAINING SESSIONS

AREA	LOCATION	WHEN
Cowal	Strachur	13/14 Oct 2017
Dumfries and Galloway	Whithorn	28/29 Oct 2017
Glasgow (ACFA)	Glasgow	5 Nov 2017
Aberdeenshire	TBA	April/May 2018
Stirling/Fife/Lothian/Borders	TBA	April/May 2018



5



Recording rock art in Fife, August 2017



CONTACT US

MAIL: Tertia Barnett, HES, John Sinclair House, 16 Bernard Terrace, Edinburgh EH8 9NX

E-MAIL: ScRAP@hes.scot

TELEPHONE: 0131 662 1456



HISTORIC
ENVIRONMENT
SCOTLAND

ÀRAINNEACHD
EACHDRAIDHEIL
ALBA

SCHOOL OF
SIMULATION AND
VISUALISATION
THE GLASGOW
SCHOOL OF ARC



Arts & Humanities
Research Council