



NORTHLIGHT HERITAGE	Walkover survey of Arrochar parish
REPORT:175	
PROJECT ID: 457	Loch Lomond
DATA STRUCTURE REPORT	Argyll & Bute

NORTHLIGHT
HERITAGE

Northlight Heritage

Studio 406 | South Block | 64 Osborne Street | Glasgow | G1 5QH

web: www.northlight-heritage.co.uk | tel: 0845 901 1142

email: northlight@yorkat.co.uk

Data Structure Report

on behalf of

Clan Macfarlane Worldwide

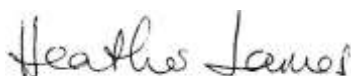
Cover Plate: Site 61: Ruined structure near Blarstainge

Report by: Heather F James

Illustrations by: Peta Glew

Director: Heather F James

Volunteers: Ian Marshall, Fiona Jackson, Sue Furness, Libby King, Margaret Gardiner,
Irene Wotherspoon, Jennifer Rees, Valerie Brown, Wendy Raine, Craig Stanford,
Katherine Price, Oliver Rusk, Elaine Black, Christine McDiarmid, Helen Maxwell,
Rhona Macfarlane, Susan Hunter, Janie Munro and Fran Crumley.



Approved by:

Date:.....17/01/2017.....

This Report has been prepared solely for the person/party which commissioned it and for the specifically titled project or named part thereof referred to in the Report. The Report should not be relied upon or used for any other project by the commissioning person/party without first obtaining independent verification as to its suitability for such other project, and obtaining the prior written approval of York Archaeological Trust for Excavation and Research Limited ("YAT") (trading as Northlight Heritage). YAT accepts no responsibility or liability for the consequences of this Report being relied upon or used for any purpose other than the purpose for which it was specifically commissioned. Nobody is entitled to rely upon this Report other than the person/party which commissioned it. YAT accepts no responsibility or liability for any use of or reliance upon this Report by anybody other than the commissioning person/party.

**NORTHLIGHT
HERITAGE**

CONTENTS		
	Abstract	4
1	Introduction	6
2	Location, Geology and Topography	6
3	Historical Context	7
4	Summary aims and objectives	8
5	Methodology	8
6	Results	8
	6.1 Glen Douglas	8
	6.2 Loch Lomond, Tarbet to Inverbeg (Nether Inveruglas)	17
	6.3 Loch Lomond, Upper Inveruglas to Tarbet	21
	6.4 Loch Lomond, Upper Inveruglas to Inverarnan	24
	6.5 Loch Lomond, Inverarnan to Doune	29
	6.6 Strath Dubh-Uisge & Loch Sloy	32
	6.7 Loch Long: Arrochar - Creagan Sithe	36
7	Discussion	39
8	Recommendations	40
9	List of Sources	40
10	Acknowledgements	41
11	Appendices	42
	Appendix 1 Site List	42
	Appendix 2 Digital Photograph List	51
	Appendix 3 Discovery and Excavation Scotland	68
	Appendix 4 Results of Historical Research by Alistair McIntyre	70
	Appendix 5 Results of Historical Research by Rhona Macfarlane	72
	Appendix 6: Glossary	73
ILLUSTRATIONS		
1	Location of Arrochar parish, Argyll	5
2	Edgar's map of Glen Douglas 1745	9
3	Location of sites up Glen Douglas	11
4	Site 18, Greitnein Structure A	12
5	Taped offset survey of Site 18, Greitnein,	13
6	Taped-offset survey of Gartanfaired (Site 22 etc.)	14
7	Site 25, Gartanfaired kiln	15
8	Site 8, Shieling	15
9	Site 14, Kiln	16
10	Site 13, possible mill	16
11	Edgar's map of Tarbet to Nether Inveruglas	17
12	Location of sites between Tarbet and Inverbeg	18
13	Site 1, Stuck na Cloich	20
14	Site 2, two-celled structure	20
15	Edgar's map of [Upper] Inveruglas to Inverarnan	21
16	Location of sites between Upper Inveruglas and Tarbet	22
17	Site 77 at Inverhoulin	23
18	Edgar's map of Upper Inveruglas to Inverarnan and Inverarnan to Doune	25

19	Location of sites between Upper Inveruglas and Inverarnan and Inverarnan to Ardleish	26
20	Site 28, possible almshouse at Creag a'Phuirte	27
21	Site 28, plan of possible almshouse at Creag a'Phuirte	27
22	Site 49, rectangular structure above Ardvorlich	28
23	Site 83, red sandstone fireplace at Garabal	29
24	Site 85 with buttressing on left hand side (Sue Furness)	31
25	Edgar's map of Strath Dubh-Uisge & Loch Sloy	33
26	Location of sites in Strath Dubh-Uisge & Loch Sloy	34
27	Site 75, Strath Dubh-Uisge (possible shooting lodge)	35
28	One of the structures of Loch Sloy visible when the loch level was low (Bing)	35
29	Edgar's map of Loch Long: Arrochar - Creagan Sithe	36
30	Location of sites between Arrochar and Creagan Sithe	38

TABLES

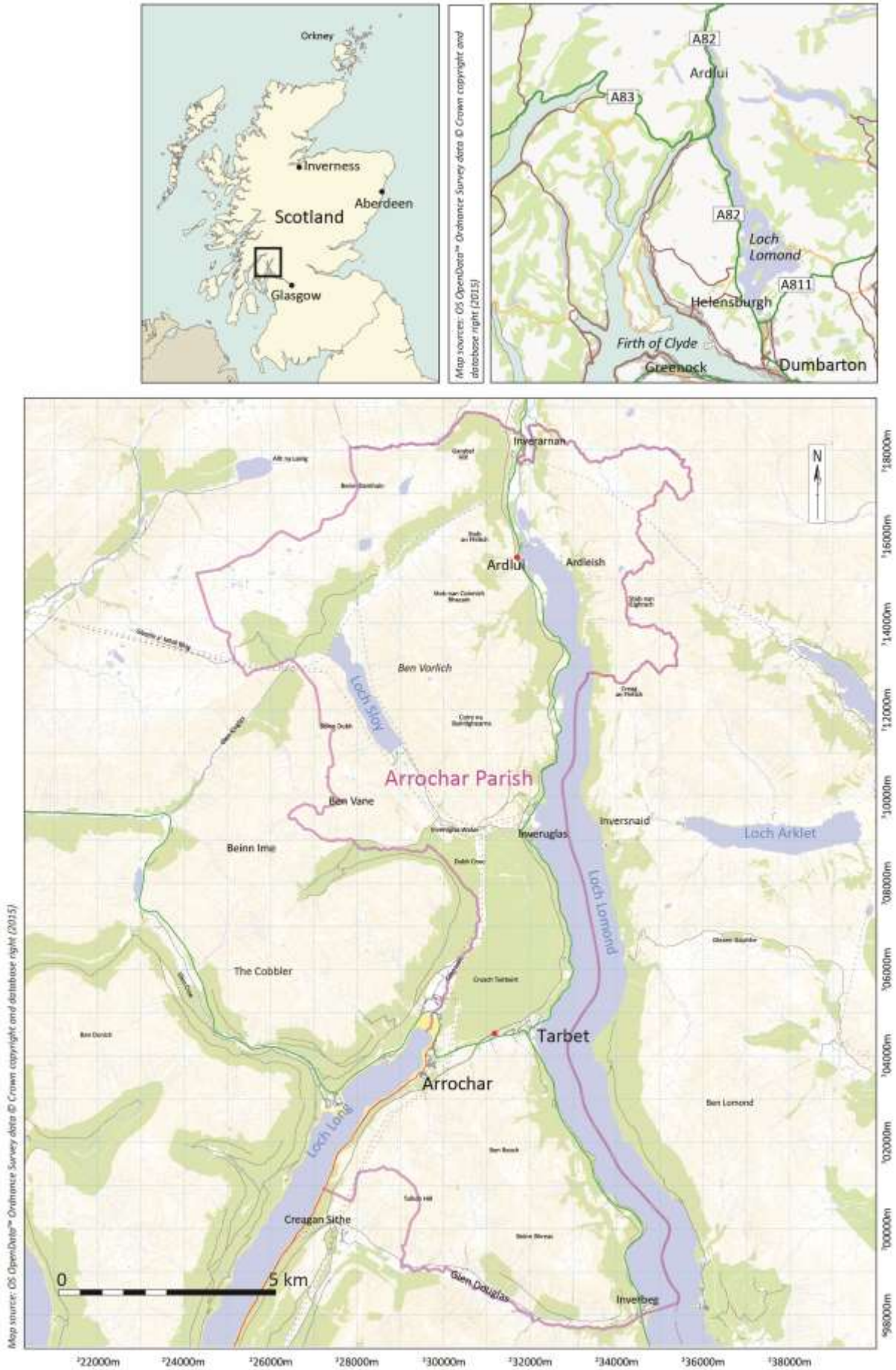
1	Historic place-names in Glen Douglas	9
2	Historic place-names, Loch Lomond Tarbet to Inverbeg (N to S).	19
3	Historic place-names, Upper Inveruglas to Tarbet (N to S)	23
4	Historic place-names, Inverarnan to Upper Inveruglas (N to S)	25
5	Historic place-names, Loch Lomond: Inverarnan to Ardleish (N-S)	30
6	Historic place-names, Arrochar - Creagan Sithe	33

Abstract

Northlight Heritage was commissioned by Clan Macfarlane Worldwide to undertake a walkover survey of Arrochar parish, Argyll and Bute, Scotland, in the spring of 2016 in order to shed light on the history and archaeology of their traditional clan territory. The survey was undertaken by members of the local community, the Association of Certificated Field Archaeologists (ACFA) and students from the University of Glasgow and was led by Northlight Heritage.

A total of 88 sites were identified, the majority of which were new. The new sites were rapidly recorded and included 22 single house/barn/byre sites, 21 single shielings or groups of shielings, 9 farmsteads consisting of groups of more than one structure, four earth or stone banks, three possible mills, three building platforms, three clearance cairns, two enclosures, two concrete platforms, two kilns, two bridges, two knocking stones and two sheepfolds. Earth banks and areas of rig and furrow were common features in the landscape but were generally not recorded unless they were associated with a structure.

The most significant discoveries included a possible 16th century almshouse built by a Macfarlane clan chief on the banks of Loch Lomond (Site 28) and three probably 18th century farmsteads. Two of these farmsteads were in Glen Douglas and have been identified as Greitnein (Site 18) and Gartanfearn (Site 22). A farmstead at the N end of Loch Lomond was identified as Tighfurl (Site 58). The remains of a possible 18th century mill at Camas nan Clais (Site 44/46) were also discovered. An excavation of one of these sites is planned for the spring of 2017.



Illus1: Location of Arrochar parish, Argyll

1. Introduction

Clan Macfarlane Worldwide commissioned Northlight Heritage to undertake a walkover survey of Arrochar parish, Argyll and Bute, Scotland, with the aim of shedding more light on the history and archaeology of the clan and its ancestral lands. Arrochar is located at the N end of Loch Lomond and was under the control of Clan MacFarlane by the 13th century, until forced to sell, because of debt, in 1785 (Fraser 1869, 94). Arrochar was part of Luss parish until 1659 and during the medieval period the parish church was located in Luss.

This archaeological survey follows on from work already undertaken in the area which includes the *Hidden Heritage of a Landscape Project* which concentrated on the isthmus between Arrochar and Tarbet (James 2014; see <http://www.hiddenheritage.org.uk/>) and also research undertaken by Whyte (1998) and Johnson-Smith (2002). A survey of Inveruglas Farm was undertaken by a team from the USA, which discovered a number of shielings and excavated Portchaible mill (Starbuck 2011). An excavation on Tarbet Isle in 2015, sponsored by Peter McFarlin and Preston McFarland, revealed a stone-built structure dating to the 17th and 18th century (James 2015). This work showed that there were many unrecorded remains in the landscape including deserted settlements, shielings and field boundaries. While most of these remains could be dated to the 19th and 20th centuries, it is possible that some are the remains of earlier activity. By recording and characterising all the sites in the landscape, we hope to be able to characterise the development of settlement and identify the earlier structures.

The Macfarlanes also possessed more substantial buildings including two castles, at Upper Inveruglas and Island I Vow; however these are the subjects of separate projects led by Firat Archaeological Services. Inverioch House was built in Arrochar in 1697 and sat within a designed landscape with offices, stables, a coachhouse, a laundry and a mill. The 18th century stables and offices survive and are occupied. The survival of the original house, located to the rear of the Claymore Hotel, is not clear, as one source suggests it was demolished (Fraser 1869, 81) while another states that it survives with added 18th century rolled skewputts (Walker 2000, 131). There are also intriguing documentary references to a house belonging to the Macfarlane chief at Clattachmore near the old Manse at Tarbet (Fraser 1869, 79) and an almshouse at 'Croiteaphurte' built by John Macfarlane in the 16th century (Fraser 1869, 98).

This is the first phase of an ongoing project which will be followed by a phase of excavation in 2017 and hopefully further surveys in the future. All the historic maps referred to below (apart from Edgar 1745) are available on the National Library of Scotland website (see <http://www.nls.uk/>).

A glossary of potentially less familiar words has been included in Appendix 6 (see page 73).

2. Location, Geology and Topography

Arrochar parish is located at the NW end of Loch Lomond, just N of the boundary between the highlands and the lowlands of Scotland (see Illus 1). The bedrock consists of the Southern Highland Group of metamorphic psammite and pelite sedimentary rocks (British Geological Survey <http://mapapps.bgs.ac.uk/geologyofbritain/home.html>). The topography consists generally of low hills between 400m to 600m high which drop steeply down to the shores of Loch Lomond and Loch Long. There are four river valleys running approximately E-W (Glen Douglas, the Arrochar-Tarbet isthmus, Inveruglas Water and Strath Dubh-Uisge). Glen Falloch runs N-S at the top end of Loch Lomond. Arrochar parish used to be part of Dunbartonshire, but is now in the administrative area of Argyll and Bute and it lies within Loch Lomond and The Trossachs National Park.

3. Historical Context

3.1 Historical background

The area around Loch Lomond formed the territory of the medieval Earldom of Lennox, and the Clan Macfarlane occupied the north-western shore of the loch from at least the early 13th century. An early charter records that Gilchrist, a younger son of the Earl of Lennox, was granted the lands and barony of Arrochar between 1225 and 1239 and from then on the lands became known as 'Arrochar MacGilchrist'. The place name Arrochar first appears in the 13th century and refers to the 'Upper Carucate of the Land of Luss' in which an 'aracher' or 'carucate' was the unit of land that a team of oxen could plough in a season (Chalmers 1824). In 1263, King Hakon of Norway sent 60 ships up Loch Long to harass the Scots. The party of Vikings and Hebrideans dragged their boats across the isthmus between Arrochar and Tarbet and then led a surprise attack on the inhabitants of Loch Lomond (Fraser 1869, 87-88). The Clan Macfarlane name is said to be derived from the name of Gilchrist's descendant, Parlane.

By the 16th century, the main residence of the MacFarlanes was on the island of Inveruglas (Fraser 1869, 69) and in 1577 a domestic residence with outbuildings was built on Island I Vow (Ellan Vhow) by Andrew Macfarlane, the laird of Arrochar (Fraser 1869, 78). The Macfarlanes were involved in local clan feuds, cattle raiding and 'banditry' which was fairly commonplace in Scotland during the 16th century and, in particular, feuded with the neighbouring Colquhouns of Luss to the S.

Cromwell's troops were active in the vicinity in the mid-17th century and because of the Macfarlanes support for the Royalists, attacked and burnt Inveruglas Castle and the house at Clattochmore. Later in the 17th century the continuation of political unrest prompted the MacFarlane chief to support a regiment, at his own expense, to guard and secure the pass between Arrochar and Tarbet (Whyte 1988, 9). He was then able to use his military control of the area to levy fees from those bringing cattle along the increasingly important drove road through their lands (Johnson-Smith 2002). Although they supported the Jacobite cause, there is no evidence that the Macfarlanes took part in either of the uprisings in 1715 or 1745.

The later 18th century saw the Clan Macfarlane chiefs attempt to introduce commercial practices to the estate, with the introduction of large sheep farms and the reduction of joint tenancy farmsteads. However, like many other Highland chiefs, the MacFarlanes over-extended themselves financially and were declared bankrupt. The estate was sold in 1785 and was eventually acquired by Sir James Colquhoun of Luss in 1821 (Fraser 1869, 95). The 8th Duke of Argyll was interested in the history of the area and sponsored the collection of local stories and 'traditions' which were published in the Dewar Manuscripts (Dewar 1964). Apart from Whyte (1988) and Johnson-Smith (2011) there has been little recent research into the history of the Macfarlanes. Johnson-Smith highlighted the great potential that lies within the collected Macfarlane papers which form the W H Hill Collection (Royal Faculty of Procurator's Library, Glasgow).

3.2 Historic Maps and aerial photographs

Two of Timothy Pont's manuscript maps of the late-16th century cover parts of Arrochar parish (No. 16 Gare Loch, Loch Long and Holy Loch and No. 17 Loch Lomond) and these are available on-line (see <http://maps.nls.uk/pont/index.html>). Pont's two maps provide a contemporary depiction of the significant castles and houses of the period, as well as the names of islands in Loch Lomond. However, the number of settlements shown in this area is minimal. Later maps have proved more helpful by providing more settlement names. These include maps of Dunbartonshire by Edgar (1745) and Ross (1777), the Military Map of Scotland by William Roy (1747-52) and the 1st edition 6 inch to the mile Ordnance Survey maps (c. 1860).

Of great help to this survey has been the opportunity of viewing the second edition Ordnance Survey map side by side with the modern, colour, georeferenced aerial photographs (see <http://maps.nls.uk/>).

4. Summary Aims and Objectives

The aims of the project were to explore the following questions.

1. What evidence is there for the occupation of strongholds by the Clan Macfarlane chiefs during the medieval period and up to the 18th century?
2. What evidence is there for where and how the ordinary clan members lived during this period?
3. How can detailed examination of historical documents contribute to the history of the clan?

The objectives of this phase of the project were to

1. undertake a rapid walkover survey of areas within the Arrochar parish where sites of interest relating to the Macfarlane clan might be located,
2. identify sites which could benefit from more detailed survey and documentary research and
3. suggest potential sites for excavation.

5. Methodology

Aerial photographs and historic maps were initially consulted on the National Library of Scotland website. This enabled possible archaeological sites to be identified and their grid references noted. This was followed by a rapid walkover survey which lasted for a total of 15 days. The more accessible areas of Arrochar parish were targeted, along the loch sides and valleys, where it was thought most likely that settlement belonging to the medieval and later periods would be located. The potential sites that had been noted on aerial photographs were located using a hand held GPS. If these proved to be real sites they were recorded using *pro-forma* sheets, briefly described and photographed (see Appendices 1 and 2). Three sites were drawn to scale (Sites 18, 22 and 28) using the taped off-set method (see Illus 5, 6 and 21). As many of the old field banks and walls were already depicted on either the 1st edition OS map or the modern 1:25,000 Explorer map they were not recorded during this survey. A catalogue of place-names, tracing their occurrences in historic maps and documents, was developed in conjunction with local archaeologists, Sue Furness and Fiona Jackson.

6. Results

6.1 Glen Douglas

Glen Douglas is located about 4km S of the Arrochar-Tarbet isthmus and forms the southern edge of Arrochar parish. It extends for about 7.5km between Creagan Sithe on Loch Long in the W and Inverbeg on Loch Lomond in the E. The hills to the N of the glen are Beinn Bhreac (681m) and Tullich Hill (632m). The parish boundary follows the Douglas Water except in the W where heads up Tullich Hill and returns to Loch Long just N of Creagan Sithe (see Illus 1). The survey concentrated on the lower slopes of Beinn Bhreac and Tullich Hill on the N side of the glen, which had been under Macfarlane control (the southern side being in Colquhoun territory). The old route from Luss to Arrochar known as the 'String Road' (*An t-Sreang*) headed northwards from Invergroin between Beinn Bhreac and Tullich Hill.

Historic maps

Two historic maps (Edgar 1745 and Ross 1777) show at least six named settlements along the N side of the valley and some of these can be traced in documents back to the 17th century (see Table 1 and Illus 2). Roy's Military map of 1747-55 depicts the River Douglas meandering through woodland at the E end of the glen and four settlements on the N side of the river, although only 'Inverglass' is named. Ross depicts a track up the glen on the S side of the river which is different from the modern road which is on the N side.

<i>Documentary references (see Appendix 4)</i>	<i>Edgar 1745</i>	<i>Roy (1747-1755)</i>	<i>Ross 1777</i>	<i>1st edition OS</i>	<i>Explorer 1:25,000</i>	<i>This survey</i>
	Nether Inveruglas	Inverglass	Inveruglas	Inveruglas (Ruins)	Inverbeg	[Nether Inveruglas]
	Inverbegg			Inverbeg Inn		
		(unnamed)		(unroofed structures)		Sites 14 & 15
Craitnoyne (1643)	Croit-nein		(unnamed)			Site 18
Gartanfairnn (1663)	Gartanfearn	(unnamed)	Gartanfarn			Sites 22, 23,24, 25, 26, 27 &33.
Innergryan (1685)	Inver-grein		Invergroin	Invergroin (roofed)	Invergroin	
Cullochquhoun (1501)	Goil-cherran		Inverchurn ?	Coille Chorain (roofed)	Coille Chorain (no structure)	
<i>Tullichintauil (16th century-see Appendix 5)</i>	<i>Tullich</i>	<i>Tulloch</i>	<i>Tullich</i>	<i>Tullich (roofed)</i>	<i>Tullich</i>	<i>Not in Arrochar parish</i>

Table 1: Historic place-names in Glen Douglas



Illus 2 Edgar's map of Glen Douglas 1745

The 1st edition OS map of the mid-19th century depicts [Nether] Inveruglas as 'Ruins' and an Inn at Inverbeg. Three unroofed and unnamed structures are depicted to the W of [Nether] Inveruglas. There are only three place names along the glen (Invergroin, Coille Chorain and Tullich) and the earlier sites of Greitnein and Gartanfearn are not shown. A road up the valley is now on the N side of the river. At the far W end of the valley (strictly speaking outside the parish) the site of Creagan Sithe is depicted as two roofed structures with enclosures and a rectangular enclosure with a mound in the centre.

The modern 1:25,000 Explorer map shows the settlements of Inverbeg (previously known as Nether Inveruglas), Invergroun and Tullich Farm. Tullich Farm has been relocated further E than it was shown on the 1st edition map. The place name Coille Chorain is marked within a series of field boundaries just W of Invergroun and Creagan Sithe in the far W is depicted as two unroofed structures.

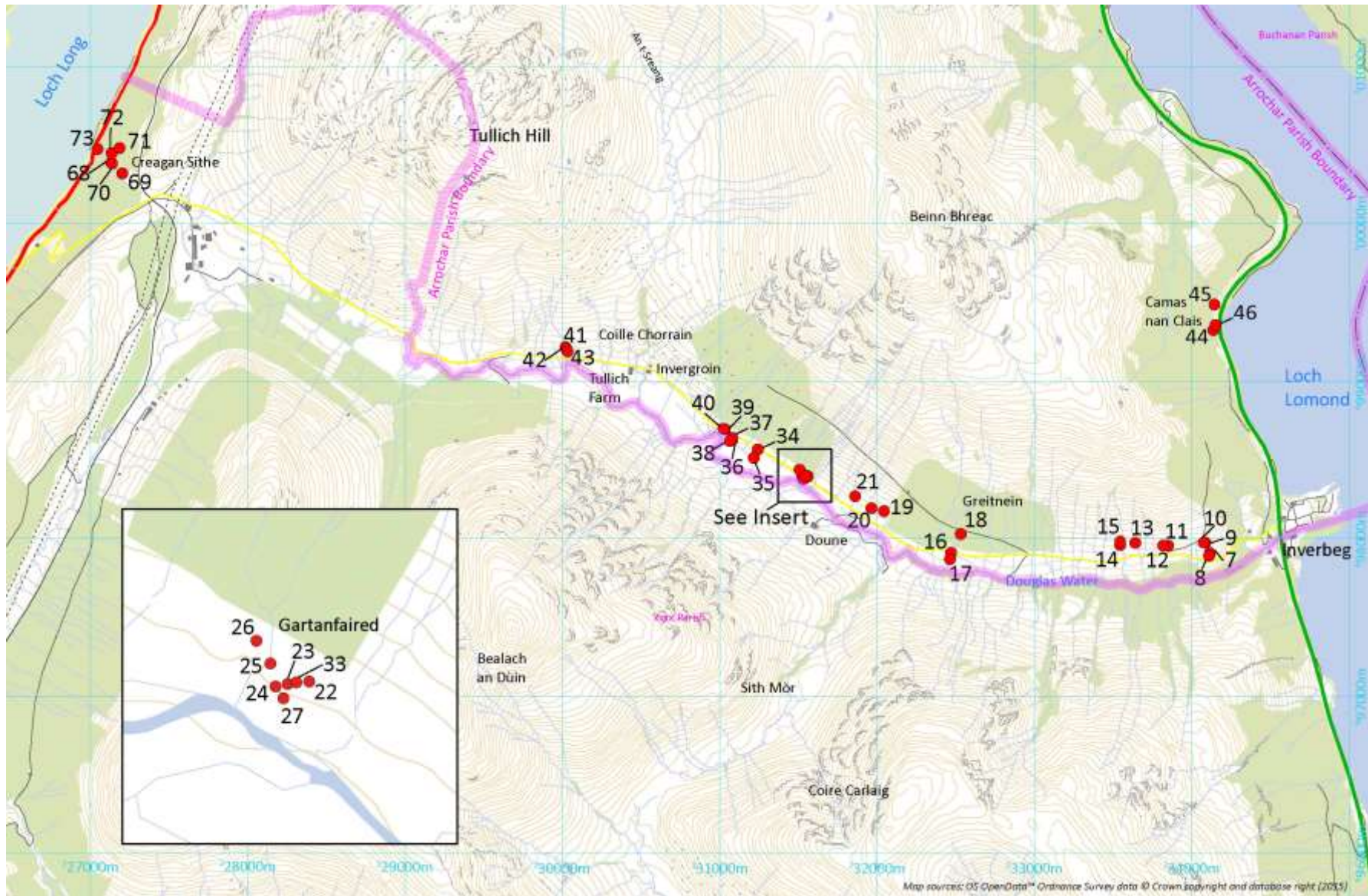
Before the parish of Arrochar was separated from that of Luss in the 17th century, the territorial boundary between the Macfarlane and the Colquhoun clans was Douglas Water. This boundary was used as the new parish boundary when Arrochar was created. However, the farm of Tullich/Tulloch was owned by the Colquhouns and tenanted by Macfarlanes (see Appendix 5). The pasture on Tullich Hill would have belonged to Tullich Farm and so was kept within the Luss parish when the Arrochar parish was created. This would explain why the parish boundary makes such a loop up Tullich Hill. Tullich Farm was moved further E to its present location in the 1960s.

The Survey (see Illus 3)

A total of 41 sites were recorded along Glen Douglas which represents nearly half of all sites recorded during this project (see Illus 3 & Appendix 1). There were 10 substantial turf, or turf and stone-built structures and 10 less substantial shielings. There were also clearance cairns, two kilns, two enclosures, rig and furrow, two modern platforms, one building platform, a knocking stone and a kaleyard. One example of a field boundary was recorded.

Most significantly, the previously unidentified townships of Greitnein (or Croitnein, Site 18) and Gartanfaired (Site 22) were identified. These sites were known in the archaeological record, but were poorly described and their place names were not recorded. Greitnein (Illus 4 & 5) is located on a steep slope on the S side of a forestry road and consists of four structures and two enclosures that straddled a burn. The historic records between 1643 and 1784 include various spellings including 'Craitnoyne', 'Craittinean', 'Critenan' and 'Greitnein' (see Appendix 4). The 1708 entry specifically refers to two families living in the '2 parts of the toun'. It is possible that this joint tenancy farm had origins further back in the medieval period, although the visible stone structures are probably of 18th century construction. This site was not depicted on Roy's Military Map perhaps because it was not considered particularly significant. The last entry for this settlement appears to be in 1810 and it was not included in the census of 1841.

The site of Gartanfaired straddles the modern road between forestry and the river (see Illus 6). It consists of two rectangular dwellings, a barn, a kiln, an enclosed kaleyard and some ill-defined enclosures and cultivation ridges (Sites 22, 23, 25, 26, 27 and 33, see Illus 7). The historic records from 1663 to 1784 show a variety of spellings including 'Gartanfairnn', 'Gortanferne', 'Gartanferne' and 'Gartanfaired' (see Appendix 4). There is evidence that this was a joint tenancy farm in the early 18th century with two tenants and had also been abandoned before the 1841 Census.



Illus 3: Location of sites up Glen Douglas

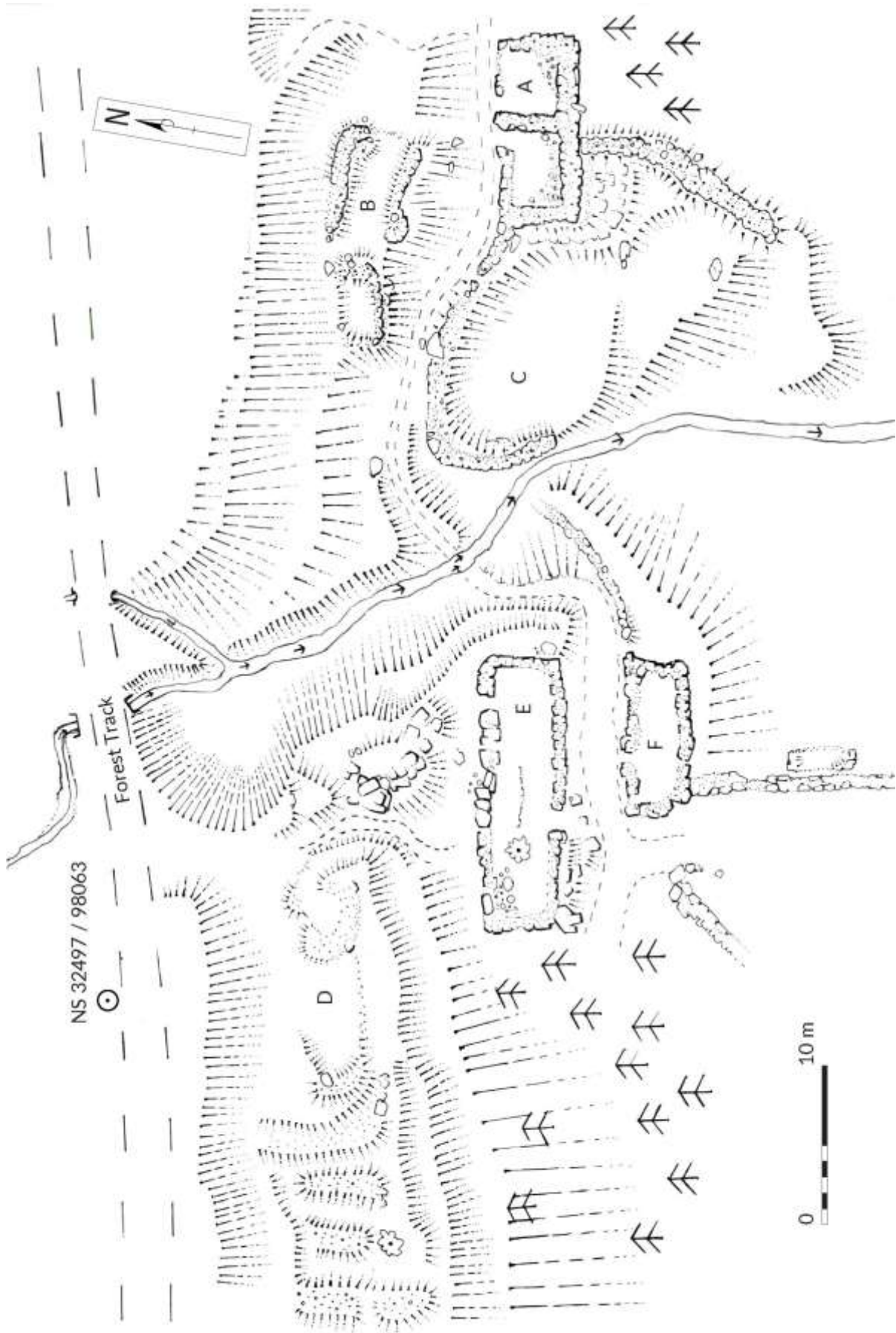


Illus 4: Site 18, Greitnein, Structure A

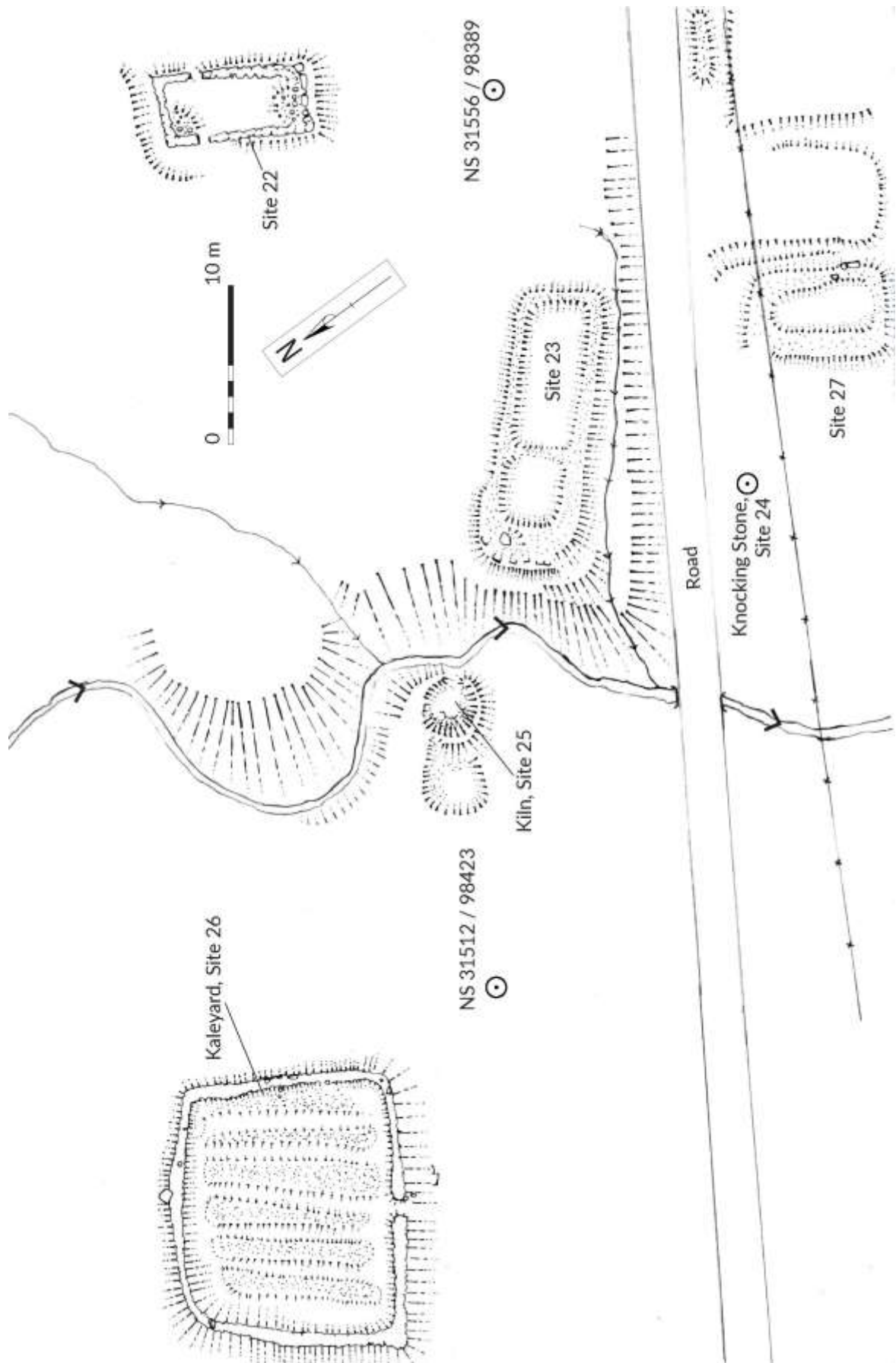
Five turf and stone-walled structures (Sites 7, 8, 11, 15 and 16) and a kiln (Site 14) are located W of Inverbeg (see Illus 8 & 9). These are interpreted as 'house/barn/byre' structures as it would be difficult to ascribe a function to them from their surface remains alone. Site 13 consists of a tumble of large stones and boulders that formed a roughly square shape and was interpreted as a possible mill because of its location beside a stream (Illus 10). These structures are more dispersed than the nucleated settlements of Gartanfaired and Greitnein and they may have belonged to an earlier, less well defined township, the name of which remains unknown.

There are also several shielings of various shapes and sizes along the glen. Some are rectangular in shape while others are oval or circular (Sites, 20, 21, 34, 37, 39, 40, 41 and 43). These 'shielings' are generally smaller than the sites classified as 'house/barn/byre' and are likely to have served a variety of functions, including seasonal shelters and stores associated with mixed farming and transhumance.

There are few sites to the W of Invergroin. The historic maps suggest there was a site called Inverchurn which is probably the same as Coille Chorain.



Illus 5: Taped offset survey of Site 18, Greitnei



Illus 6: Taped-offset survey of Gartanfaired (Site 22 etc.)



Illus 7: Site 25, Gartanfaired kiln



Illus 8: Site 8, Shieling



Illus 9: Site 14, Kiln



Illus 10: Site 13, possible mill

6.2 Loch Lomond: Tarbet to Inverbeg (Nether Inveruglas)

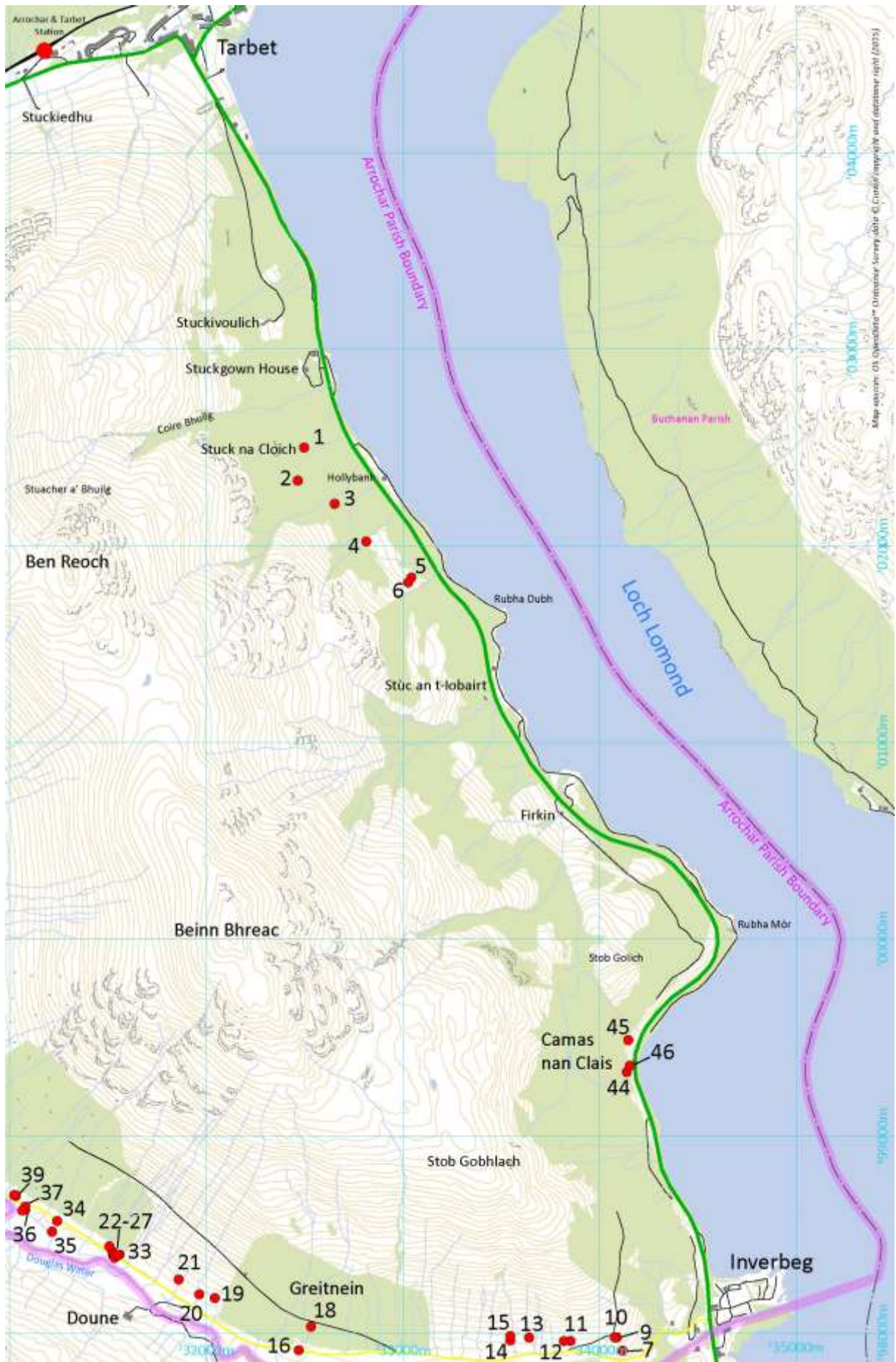
The section lies between Inverbeg (Nether Inveruglas) and Tarbet on the W shore of Loch Lomond and is about 6.5 km long. It is characterised by steep wooded slopes which sweep down from Beinn Bhreac (681m) and Ben Reoch (661). The Old Military Road (or Caulfield's Military Way) from Dumbarton to Inveraray was built along Loch Lomondside in the mid-18th century. The modern busy main road (A82) follows the shoreline closely and the Old Military Road is visible when the new road deviates from the route of the older road. There are two instances of the place name Inveruglas within the survey area. One is at the E end of Glen Douglas and is referred to as Nether Inveruglas. The other is known as Upper Inveruglas and is opposite Inveruglas Castle (see Section 6.4).

Historic maps

Pont (17) does not depict any settlements between [Nether] Inveruglas and Tarbet, but that does not mean that none existed. Edgar's map of 1745 depicts seven settlements along this stretch including Upper and Nether Stuckintibert (see Illus 11 and Table 2). The historical research into early documentary references for these sites has not yet been undertaken. Roy's Military Map of 1747-52 and Ross's map of 1777 depict several settlements and a road running along the lochside. The 1st edition OS map depicts two road lines between Tarbet and [Nether] Inveruglas, one is probably the line of the Old Military Road and the other the Toll road. One unnamed, unroofed structure is marked N of [Nether] Inveruglas (approximate location NS 341 989). It can be seen that the Colquhouns were still buying up old Macfarlane lands in 1834 when Sir James Colquhoun of Luss bought the farm of Stuckintibbert from William Dick Macfarlane (Fraser 1869, 116).



Illus 11: Edgar's map of Tarbet to Nether Inveruglas



Illus 12: Location of sites between Tarbet and Inverbeg

Edgar 1745	Roy (1747-1755)	Ross 1777	1st edition OS	Explorer 1:25,000	This survey
Tarbet	Tarbat	Tarbart	Tarbet	Tarbet	
		Publick House			
Stuc-y[...]				Stuckgown Woods	
Stuc-volig		Stukvulig	Stuckivoulich	Stuckivoulich	
		Contine(?)			
	Dallavulig		Stuckgown House	Stuckgowan Hotel	
		Croit a'Chladaich	Croit a'Chladaich	Hollybank	
Stuc-na-cloich	Stucknacloich	Stuckinclaigh			Site 1
Upper Stuckintibert	Upper Stuckintib[...].t				
Nether Stukintibert	Nether Stuckintibert	Stucknatibart	Stuc an t-lobairt	Stuc an t-lobairt	
Ferkin	Ferquhin	Farkin	Firkin	Firkin	
Camus-na-[...sh]	Comisnaglass	Mullincambus	Camus nan Clais		Site 44 & 46
		Stuk Mclan	Unnamed?		

Table 2 Historic place-names, Loch Lomond Tarbet to Inverbeg (N to S).

The survey (see Illus 12)

A total of nine sites were recorded along this stretch of the lochside (Sites 1 – 6, 44, 45 & 46). The survey targeted two areas, Stuck na Cloich (or the Black village, Site 1) and the mill at Camus-na-clais (Sites 44 & 46). Some of the settlements recorded on earlier maps are still occupied, such as Stucknatibart and Firkin, and were not visited at this time.

The settlement of Stuck na Cloich (Site 1) has been already been surveyed (Johnson-Smith 2011). It consists of the remains of four rectangular structures, a kiln and an enclosure with evidence for rebuilding and the insertion of a twinning pen (see Illus 13). A large enclosure lies to the W near an area of rig and furrow. The site is not depicted on the 1st edition OS map and so it was probably abandoned well before the mid-19th century.

A short distance to the SW of Stuck na Cloich, there is a two-celled structure (Site2), an earth bank (Site 3) and another enclosure (Site 5), showing that the use of the landscape extends beyond the known extent of the township (see Illus 14). Site 4 consists of a short length of walling beside a water pool and the only explanation the author could suggest would be that it concealed a whisky still.



Illus 13: Site 1, Stuck na Cloich



Illus 14: Site 2, two-celled structure

The site of Comisnaglass (or Camus-na-clais) is located just S of Rubha Mor. The place name Mullincambus (Ros 1777) and the presence of a stone built lade (Site 44) once fed by Lochan Uaine (or the Fairy Loch), indicates that this was probably the site of an old mill, dating back to at least the 18th century. The historic records might be able to clarify whether this is a cereal mill or perhaps a timber mill, given the amount of forestry nearby. The 1st edition OS map depicts at least four roofed structures in the mid-19th century. The area today is covered in stones and boulders suggestive of demolished buildings and at least one rectangular structure could be identified (Site 46). Up the hill in woodland nearby, there is a D-shaped hollow (Site 45) measuring 5m by 4.8m and interpreted as either a shieling or perhaps a natural tree-throw.

6.3 Loch Lomond, Upper Inveruglas to Tarbet

The stretch between Upper Inveruglas and Tarbet extends for about 5km along the W side of Loch Lomond and is characterised by a steep wooded slope running down from Cruach Tairbeirt (415m) to the water's edge. The modern road (A82) follows the lochside closely and the West Highland Railway line (completed in 1895, see <http://www.arrocharheritage.com/Navvies.htm>) follows a higher contour. The route of the Old Military Road is also visible in places.

Historic maps

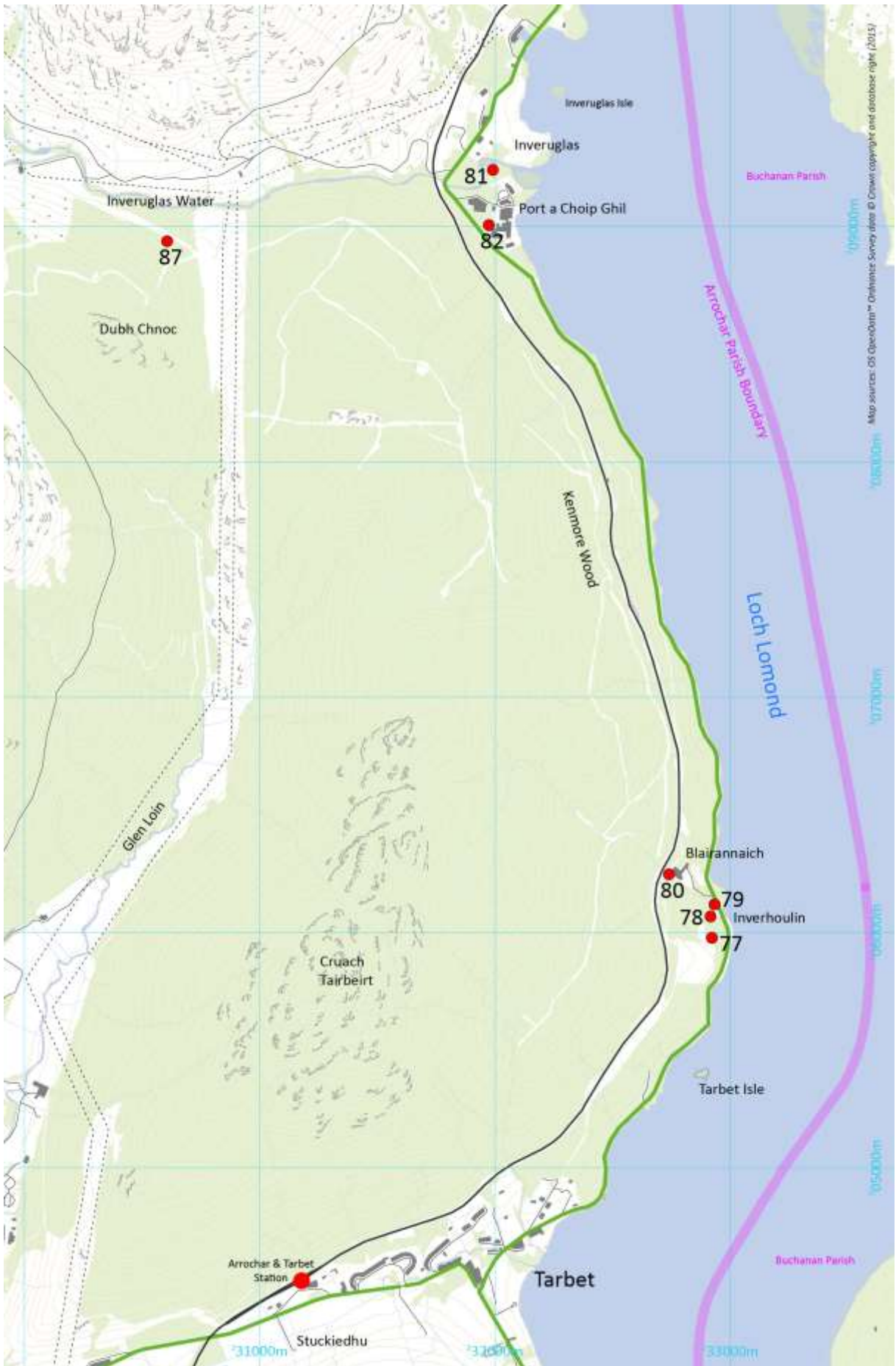
Edgar depicts five settlements along the loch side in 1745, including [Upper] Inverouglas and Tarbet and Monachoil up the Douglas Water Glen (see Illus 15 and Table 3). Roy does not depict Blar-renich, but does show the line of a road that is higher up the hill than the present road. Blar-renich is called Blarnik by Ross in 1777 and it continues as a settlement to the present day. Only Ross depicts a settlement at Kenmore between Blarnik and Portcuple. This place name is given to a wood in the vicinity by the mid-19th century. Monachoil is not depicted on other maps.

The Survey (see Illus 16)

A total of seven sites were identified along this stretch, including the Weavers Cottage (Site 79) beside the road at Inverhoulin which is depicted as roofed on the 1st edition OS map and is still occupied. There are the remains of two rectangular structures (Sites 77 and 78) to the S of the Weavers Cottage. Site 77 is located on a hilltop with two enclosures and an area of rig and furrow nearby. Site 77 was not depicted on the 1st edition OS map and so was probably abandoned and ruined well before the mid-19th century (see Illus 17). The other structure (Site 78) is on lower ground and was roofed in the mid-19th century. The foundations of a bridge over a stream survive behind the house at Blarannich (Site 80) on the line of the Military Way.



Illus 15 Edgar's map of [Upper] Inveruglas to Inverarnan



Illus 16 Location of sites between Upper Inveruglas and Tarbet

<i>Edgar 1745</i>	<i>Roy (1747-1755)</i>	<i>Ross 1777</i>	<i>1st edition OS</i>	<i>Explorer 1:25,000</i>	<i>This survey</i>
Inverouglass	Inverdowglas		Upper Inveruglas	Inveruglas	
Port-chiable	Portchable	Portcuple	Port a'Choip Ghil		Sites 81 & 82
Monachoil					Site 87
		Kenmore	Kenmore Wood	Kenmore Wood	
Blar-renich		Blarnik	Blarannich	Blairannaich	Site 80
Inver-chulin	Inverchiuilling	Inverchulin	Inbhir a'Chuilinn	Inverhoulin	Sites 77, 78 and 79
Tarbet	Tarbat	Tarbart	Tarbet	Tarbet	
			Knock		

Table 3 Historic place-names, Upper Inveruglas to Tarbet (N to S)

A mill at Port a'Choip Ghil has been partly excavated (Starbuck 2011) and so the visit here was brief (Site 81). An unroofed structure shown on the 1st edition OS map to the S of Port a'Choip Ghil (Site 82) can be seen at the edge of a car park. It is known locally as the 'toll keeper's house' and said to have been re-used as a hut in the 1940s (Starbuck 2011, 80). Within woodland the low remains of a site were found (Site 87) which may correspond with Monachoil on Edgar's map. Monachoil (Site 87) lies to the W of Upper Inveruglas on the S side of Inveruglas Water.



Illus 17: Site 77 at Inverhoulin

6.4 Loch Lomond, Upper Inveruglas to Inverarnan

This section is located at the N end of Loch Lomond and extends for 9.5km along the W side of Loch Lomond. The landscape is generally wooded and steeply sloping from a series of hills, including Little Hills (808m), Stob nan Coinnich (647m), Stob an Fhithich (419m) and Garabal Hill (453m), apart from the vicinity of Stuckendroin Farm, where it opens out into farmland and pasture. N of Ardlui the landscape becomes wooded and marshy as it nears the outlet of the River Falloch. The parish boundary at the N end of the parish is at the outlet of the Allt Annan a tributary of the River Falloch just S of Inverarnan.

Historic maps

Edgar's map of 1745 depicts six settlements along this stretch, one of which S of Ard-vurlick is unnamed (see Illus 18). Kenmore Point is shown to the N of the settlement of [Upper] Inverouglas, a location which would correspond with the current visitor centre and promontory near Inveruglas Isle. The contemporary place name Ceann Mor refers to a promontory lying further N, near Ardvorlich. The Kenmore place-name is also noted to the S of Upper Inveruglas (see Section 6.3) which would suggest that there has been either some confusion about the exact location of Kenmore or that it has moved. Edgar's map also shows the place name 'Spittle of Inverarnan'. The place name 'spittal' means a hostelry, hospital or guest house and is a reflection of the site as a stopping point on a thoroughfare. The age of this site is currently unknown, however research has suggested elsewhere in Scotland that the name 'spittal' is perhaps evidence for a monastic origin or that the lands were associated with the Knights Hospitaller or Knights Templar (Niven 2011, 92-3). The route was used by the drovers in the 18th century (pers. comm. Alistair McIntyre) and so the name may well date from this period.

Roy's Military map of 1747-52 depicts similar settlements to Edgar, with varying spellings, but does not depict an unnamed settlement south of Ardvarlig (Ard-vurlick). Roy depicts a road passing down the W side of Loch Lomond. A promontory near Ardlue is called Tomnaclach.

Ross (1777) depicts two settlements called Garnstuck. The northern example is at the mouth of 'Strathanisk' (See section 6.6) along with another settlement, not noted elsewhere called Auldleck. Clachintarve (without a settlement symbol) refers to 'Clach nan Tarbh' (= Pulpit rock). It is not currently clear what two other names without settlement symbols refer to (Auldrein, possibly 'old drain' and Meaulnasaig).

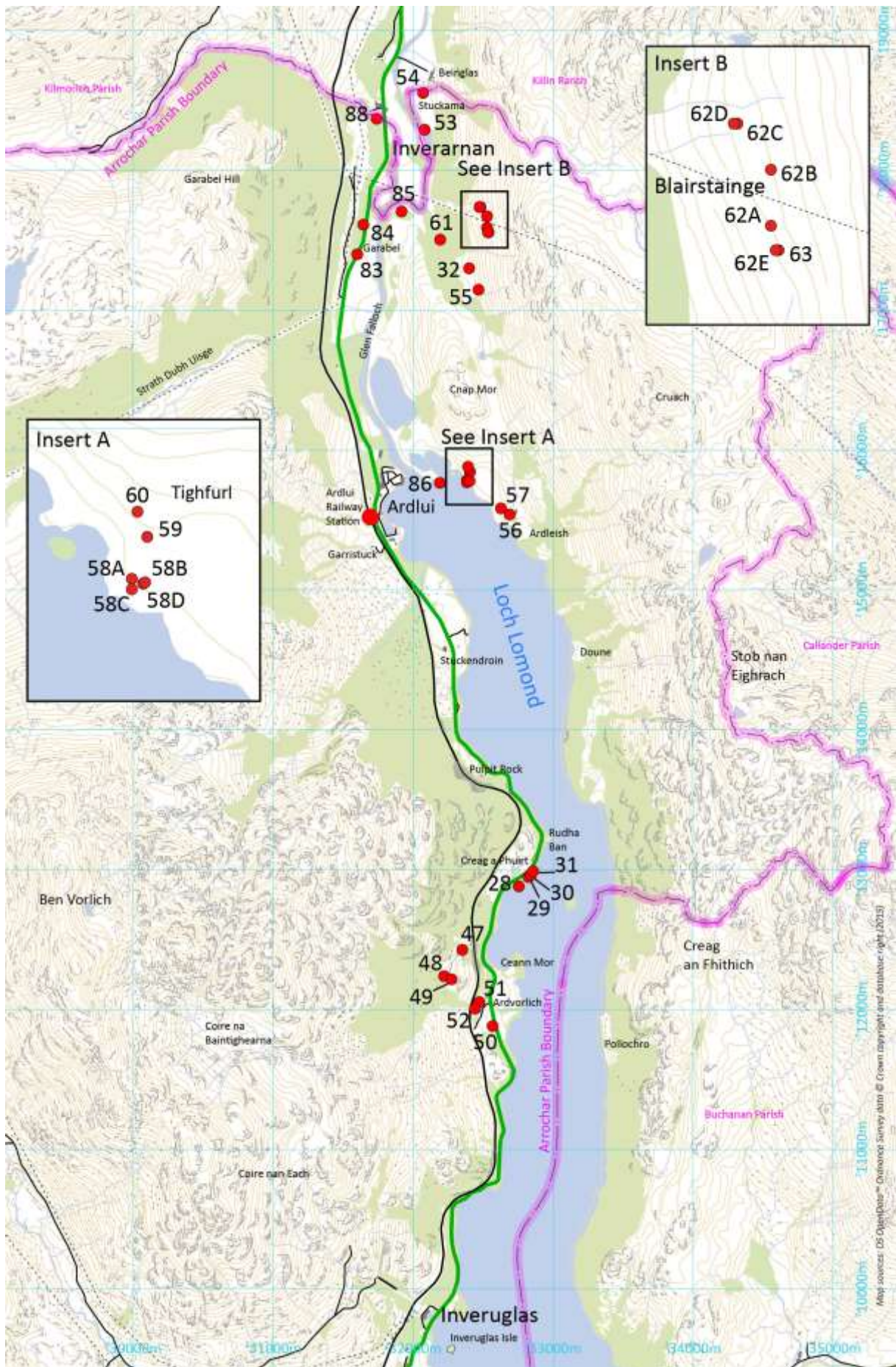
The 1st edition OS map confirms the relative locations of most of the settlements seen in the mid-18th century although the spellings differ (see Table 4). It shows the Toll Bar across the road at the N end of the parish and two road lines following the loch, sometimes merging. No settlements are shown at the mouth of Strath Dubh-Uisge. The place name 'Creag a'Phuirt' is located at the point Rudha Ban, but no structures are shown.



Illus 18 Edgar's map of Upper Inveruglas to Inverarnan and Inverarnan to Doun

<i>Edgar 1745</i>	<i>Roy (1747-1755)</i>	<i>Ross 1777</i>	<i>1st edition OS</i>	<i>Explorer 1:25,000</i>	<i>This survey</i>
<i>Inverernan</i>	<i>Inverearnan</i>	<i>Publick House of Auldarnan</i>	<i>Inverarnan Hotel</i>	<i>Inverarnan</i>	
Spittle of Inverernan					Site 88
Garbaill	Garburl	Garbal	Garabal	Garabal	Site 83, 84
		Garnsstuck		Garristuck	
		Auldleck			(Structures here not recorded)
Ard-lewie	Ardlue		Ardlui	Ardlui	
	(Tomnaclach)				
Garistok	Garrastuck	Garnstuck	Garristuck	Garristuck	
		(Auldrein)			
Stuc-an-drein	Stuckindraing	Stuckindrne	Stuckindroin	Stuckendroin	
		(Clachintarve)	(Clach nan Tarbh or Pulpit rock)	(Clach nan Tarbh = Pulpit rock)	
		(Meaulnasaig)			
				(Creag a'Phuirt)	Sites 28, 29, 30 & 31.
(Elan Avon)	(Islandavow)	(Ellanvon)		(Island I Vow)	
	(Kenmore)			(Ceann Mor)	
Ard-vurlik	Ardvarlig	Ardvurley	Ardvorlich	Ardvorlich	Sites 47, 48, 49, 50, 51 & 52
(unnamed)					
Inverouglass	Inverdowglas			Inveruglas	

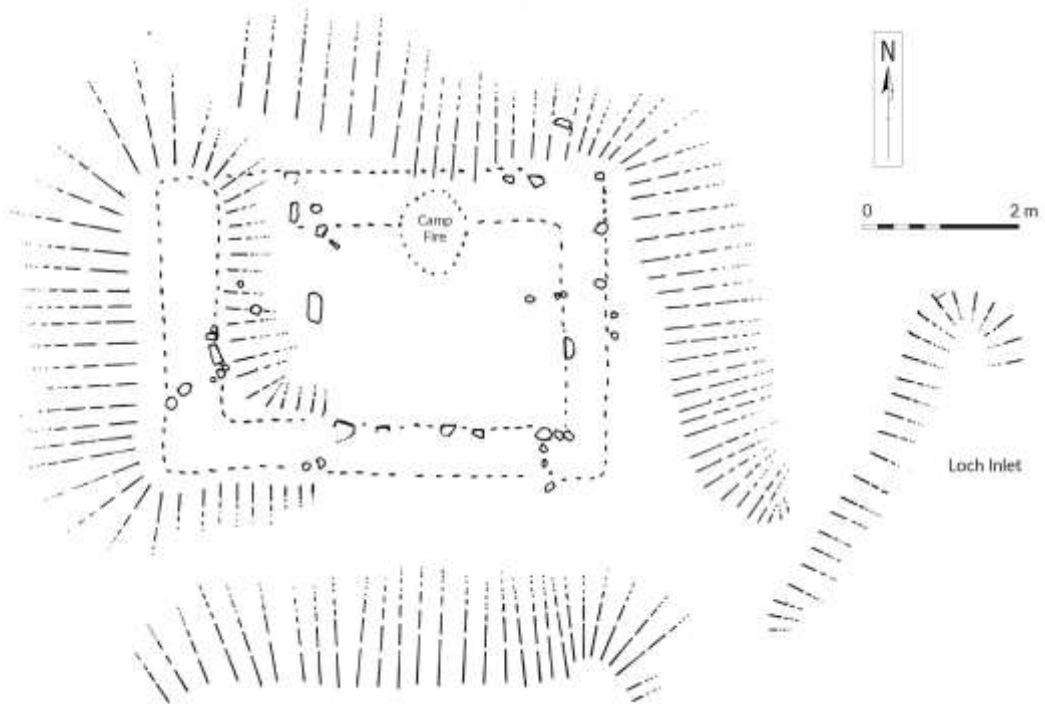
Table 4 Historic place-names, Inverarnan to Upper Inveruglas (N to S) (sites in italics are not in Arrochar parish)



Illus 19 Location of sites between Upper Inveruglas and Inverarnan and Inverarnan to Ardluish



Illus 20: Site 28 possible almshouse at Creag a'Phuirte



Illus 21: Site 28, plan of possible almshouse at Creag a'Phuirte



Illus 22: Site 49, rectangular structure above Ardvorlich

The Survey (see Illus 19)

A total of 12 sites were recorded along this stretch. The most significant discovery (Site28) is that of the footings of a rectangular structure in the vicinity of Creag a'Phuirte (or Bruitfort) where John Macfarlane is said to have built an almshouse in the 16th century opposite his house on Island I Vow (Fraser 1869, 98). This almshouse was for the 'reception of poor passengers who might happen to require shelter in visiting or in passing through the district'. The structure seen at this location (Site 28) measures 5.2m by 3.8m (see Illus 20 & 21). There is also walling nearby, beside the loch. There is a simple D-shaped structure (Site29) probably a temporary shelter and a length of revetment about 4m high below the road (Site30). A stretch of old track (Site31) 5m wide can be seen for about 50m below the line of the current A82.

An earlier survey covered an area SW of Ardvorlich (Starbuck 2011, Sites1-6) so this survey concentrated on an area of hillside to the NW of Ardvorlich. A 4m long revetted track (Site 47) would have assisted access to the hill ground. A ruined rectangular structure (Site 48) lies within a sheltered valley, ideal for settlement and cultivation, within a larger stone walled enclosure. This is classed as a shieling, but given its low altitude, may have also acted as a permanent settlement. Another rectangular structure occupies a small terrace nearby (Site 49).

Down by the lochside, there is an extensive area covered with concrete and brick bases (Site 50) which was interpreted as the probable remains of a 20th century military camp. It is likely that local residents will be able to provide further information on this site. Behind an occupied cottage at Ardvorlich there are the remains of an older settlement in the form of unroofed drystone buildings (Site 51). The remains of a collapsed bridge lie nearby (Site 52) which would have taken the old road over a stream.

Further N, two groups of ruins at Garabal were visited briefly. On the E side of the road the ruins of 'old' Garabal consist of three unroofed structures (Site 83). Of special note is a moulded red sandstone fireplace seen within one of these structures which is unusual for this type of building (see Illus 23) and might have been removed from Inveruglas Castle (Fraser 1869, 79). A more recent group of buildings at Garabal (Site 84) is located on the W side of the road, slightly further N. This second group of buildings is not depicted on the 1st edition OS map and so is likely to have been built in the late 19th and early 20th centuries.



Illus 23: Site 83, red sandstone fireplace at Garabal

6.5 Loch Lomond: Inverarnan to Doune

This stretch measures 3.5km on the E side of the River Falloch and S of the Ben Glas Burn. The parish extends southwards along the upper reaches of Loch Lomond as far as the Allt Rostan which lies about 2.5km S of Ardleish. The landscape is characterised by wooded valley sides and undulating rough ground and was accessed by foot along the West Highland Way.

Historic Maps

Pont lists the islands at the top of the loch, three of which have been identified (see <http://maps.nls.uk/pont/texts/transcripts/ponttext149v-150r.html>)

- '36 Terbert [Tarbet Isle]*
- 37 Row-glash [Inveruglas]*
- 38 Ylen-ow [Island I Vow]*
- 39 YlenEaunlich*
- 40 Ylen na chash'*

Pont's map (No. 17) depicts 'Yle Eunlich' at the top of the loch and his accompanying text says,

'thrie myl above it[Ylen-ow], hard upon the head of the loch is Ylen Eaunlich of a flight shot long, with a dwelling upon it. it is half a myl distant from Dow-viisk I mean the mouth therof. This Dow-viisk in the uthir syd is the head of the water of Glen-fallacht'

(See <http://maps.nls.uk/pont/texts/transcripts/ponttext150v-151r.html>).

Dow-visk presumably refers to Strath Dubh-Uisge (see Section 6.6). Pont did not provide a written description of *Ylen na chash* which was presumably in the vicinity of *Ylen Eaunlich*. Edgar's map of 1745 depicts three settlements in addition to the Stuc-ma Lead furnace, but no occupied islands at the top of the loch (see Illus 18). Roy's Military Map of 1747-52 depicts a road extending S from Benglash (in Killin parish), crossing the burn to the W of 'Stuckama' and then fording the River Falloch to join a road down the W side of Loch Lomond. At the N end of the loch, Roy includes two interesting place names. Island Ellich[?] is a promontory on the E side of

the River Falloch and Ylan [...]eoch is depicted as an island to the E of Island Ellich[?]. Perhaps the promontory was once an island, but has become joined with the mainland with the deposition of river alluvium. Ross 1777 depicts Ellan henrig at the top end of the Loch and is the only map to show a settlement called Tighfurl to the N of Ardlis.

The 1st edition depicts a track running from Beinglass south-westwards towards a ford over the River Falloch. A single large roofed, unnamed structure lies immediately S of the burn in the vicinity of what Roy called Stuckama. The track then heads on S to Blarstainge which is unroofed and in ruins, and on to Ardleish which is roofed. In the field to the NE of Ardleish there is a single roofed structure and further NW there are two further unroofed, unnamed structures. On a promontory opposite it there are two unroofed structures also unnamed.

Pont 17 (16th century)	Edgar 1745	Roy (1747-1755)	Ross 1777	1st edition OS	Explorer 1:25,000	This survey
	Stuc-ma Lead furnace	Stuckama	(Stuckimina)	(Ford)		Site 53, 54
		(River Fell)	(Glenfalloch Water)	(River Falloch)	(Allt Arnan & River Falloch)	Site 85
	Blar-Staing	Plaistaing		Blarstainge (Ruins)	Blarstainge	Sites 32, 55, 61, 62A, 62B, 62C, 62D, 62E, 63
(YlenEaunlich)		(Island Ellich)	(Ellan henrig)			Site 86
		(Islandagirr)	(Ellan gur)			
(Ylen na chash)						
		(Ylan [...]eoch)				
			(Dunaclag)			
			Tighfurl			Sites 58A, 58B, 58C, 58D, 59, 60
	Ardleish	Ardleish	Ardlish	Ardleish	Ardleish	Sites 56, 57
	Doun	Dune	Dun	Doune	Doune	

Table 5 Historic place-names, Loch Lomond: Inverarnan to Doune (N-S) (Names in brackets are not settlements).

The Survey (see Illus 19)

A total of 14 sites were found along this stretch. The remains of a substantial building (Site 54) can be seen at the N end of the parish at Stuck-ma/Stuckama. It has dressed stone around the doorways, some of which are blocked. The 1st edition OS map depicts this building as a roofed structure and so it is probably late-18th or early-19th century in date. It is surrounded by numerous humps, bumps and possible building platforms which might relate to an earlier settlement or lead furnace. However, some of this disturbance is fairly recent.

The ford over the river is visible as a raised weir of boulders (Site 53) that extends half way across the river (the rest has presumably been dredged away). A wide, earth bank can be traced from Benglash towards the ford and this is presumably a raised section of road, as depicted by Roy.

The ruins of two rectangular structures, once roofed with slate, can be seen on a raised promontory at the top of the loch (Site 86, see also Canmore: NN31NW27) as noted by Peter McFarlin on a previous visit. These two structures are depicted on the 1st edition OS map as unroofed, indicating that they had been abandoned by the mid-19th century. It is possibly this site that was being referred to as Yle Eunlich by Pont, as Ellan henrig by Ross and as Island Ellich[?] by Roy. It was also referred to as Kenrig or Kernaige and Fraser mentions that it had become united with the mainland (Fraser 1869, 147). Pont mentions a 'dwelling' on Yle Eunlich, but it is not

possible to say at this stage whether the visible structures are late-16th century in date or are a later build, perhaps incorporating earlier fabric.

Fraser mentions an island called Eilean-a-Ghoar (=Bloody island) 'about a mile from the head of the loch' located in 'a bay near Doune'. Stories tell how Duncan Dhu killed three Athole men here (Fraser 1869, 93) and also that it was where several Macfarlanes were killed by Macgregors (Fraser 1869, 147). Ross depicts an island called Ellan gur to the S of Dun, Roy calls it Islandagirr, but it is unnamed on the 1st edition OS map. An island in this locality is still visible on aerial photographs. There is a still local story which relates how Macfarlanes were murdered on an island in this vicinity (pers. comm. James Fisher).

A small island (grid reference NN 32292 15824) off the east shore of Loch Lomond, well N of Doune, opposite the promontory was investigated with the aid of canoes, but no structures were seen. Linear features, seen on aerial photographs on one side of the island at NN 32262 15854, are fallen trees.

On a bend in the River Falloch, opposite where an old canal and the Allt Arnan meet, there are ruins of a rectangular structure (Site 85) which has a doorway facing the river to the N overlooking the flood plain. The structure has been strengthened on the N side with additional buttressing (see Illus 24). It is unnamed and is marked on the 1st edition OS map as unroofed and so it has been abandoned since the early-19th century.



Illus 24: Site 85 with buttressing on left hand side (Sue Furness)

The deserted settlement of Blarstainge (Site 32) was surveyed by Johnston-Smith (2011), however, there are further structures in the vicinity. These include a rectangular structure above Blarstainge which has been built against an existing fieldwall (Site 55). To the NW of Blarstainge, a structure with two mature oak trees growing within it, lies within a deer-fenced enclosure (Site 61) and was unroofed by 1860. It was nicknamed the 'Blaeberry House' during this survey (see cover) because of the berries growing there. To the E (uphill) of Site 61 there is a large, roughly D-shaped enclosure associated with four unroofed structures, as shown on the 1st edition OS map (Sites 62A – 62D). Stone footings for a sub-rectangular structure located on a grassy knoll are interpreted as the remains of a shieling (Site 62E) and a small lambing pen has been built against a large stone erratic (Site 63).

The buildings within the deserted farm of Ardleish (Site 56) include a corrugated iron clad cottage which was

lived in until relatively recently. It is surrounded by older ruined, stone built, farm buildings which were roofed in the mid-19th century. In the field to the NW of the main farm, all that can be seen of a roofed structure on the 1st edition OS map are moss covered stones forming a roughly square shape (Site 57).

Along the shore at a short distance to the NW of Ardleish there is another deserted settlement consisting of three structures and an enclosure (Sites 58A – 58D). This settlement might correspond to the site depicted on Ross's map of 1777 as Tighfurl. This place name has not been noted elsewhere and it is not possible to say at this time whether this is a short lived settlement dating to the late 18th century or perhaps the last remnant of a much older settlement that was not significant enough to be depicted by other map makers. A structure, with one square end and one rounded end (Site 59), overlooks Site 58 and further N a rectangular structure abuts a field wall (Site 60).

The deserted settlement of Doune lies 1.2km S of Ardleish, but was not reached during this survey. Roy's map depicts Doune as a group of 13 structures which is fairly large for the period and clearly represents a joint tenancy farm. On the 1st edition OS map there are three foci, one in the N consists of four unroofed structures, in the centre there are five roofed structures and two enclosures and to the S there is a sheepfold with a small enclosure and a further large enclosure.

A group of shielings at Creag Caisteil can be seen on aerial photographs at the very southern boundary of Arrochar parish (S of Allt Rostan at grid reference NN 34536 12890). The first edition OS map shows two unroofed structures and the modern map depicts at least five structures. This area was considered too remote to include in the survey this season.

6.6 Strath Dubh-Uisge & Loch Sloy

Strath Dubh-Uisge extends in a south-westerly direction from Loch Lomond, just S of Garabal, to the top of Loch Sloy Reservoir, a distance of about 5km. The strath lies between Garabal Hill (453m) and Beinn Damhain (684m) to the NW and Stob an Fhithich (419m), Stob nan Coinnich Bhacain (647m) and Ben Vorlich (941m) to the S. The strath is known locally as the 'back lane' (pers. Comm.. James Fisher). The initial section from Loch Lomond is steeply sloping through forestry with waterfalls, opening out beyond into a wide valley. Modern development along the strath includes an aqueduct that collects water for the Loch Sloy Reservoir, an overhead power line and a modern forestry track that leads to Butterbridge in Cowal. Loch Sloy is now a much larger body of water since the construction of the Loch Sloy Dam and has flooded some of what was the traditional heartland of the Macfarlanes. The landscape to either side of Loch Sloy is steeply sloping with Beinn Dubh (773m) and Ben Vane (916m) to the W and Ben Vorlich to the E. The northern end of the parish follows the streams, Allt Arnan and Allt na Lairige, and encompasses an area to the N of Strath Dubh-Uisge which was not visited during this survey.

Historic maps

Edgars map of 1745 does not depict any settlements up Strath Dubh-Uisge, but does show a settlement S of the stream Ald Ernan named Bad-golach (see Illus 25). Edgar depicts four settlements around Loch Sloy, three of which (Carn-lyn, Sail and Ardteascarnish) are not shown on subsequent maps. Carn-lyn occupies a location within a fork in the river to the N of a loch which corresponds to the later settlement of Loch Sloy (now flooded see Illus 28). The fourth place name, Cean-Lochan, is very similar to Carrgheriachan which, on Roy's map, is the name of a river entering Loch Sloy from the N.

Ross (1777) remarks on the 'Fine sheep pasture' on the slopes of Binvurly (Ben Vorlich) and depicts the two settlements at the E end of the strath (Garnstuck and Auldleck, see Section 6.4 above). The 1st edition OS map depicts two isolated, unroofed and unnamed structures along Strath Dubh-Uisge and a settlement called Loch Sloy which consists of three roofed structures, one unroofed and an enclosure. A track is shown extending from Loch Sloy settlement past a sheepfold and on down the E side of the loch.



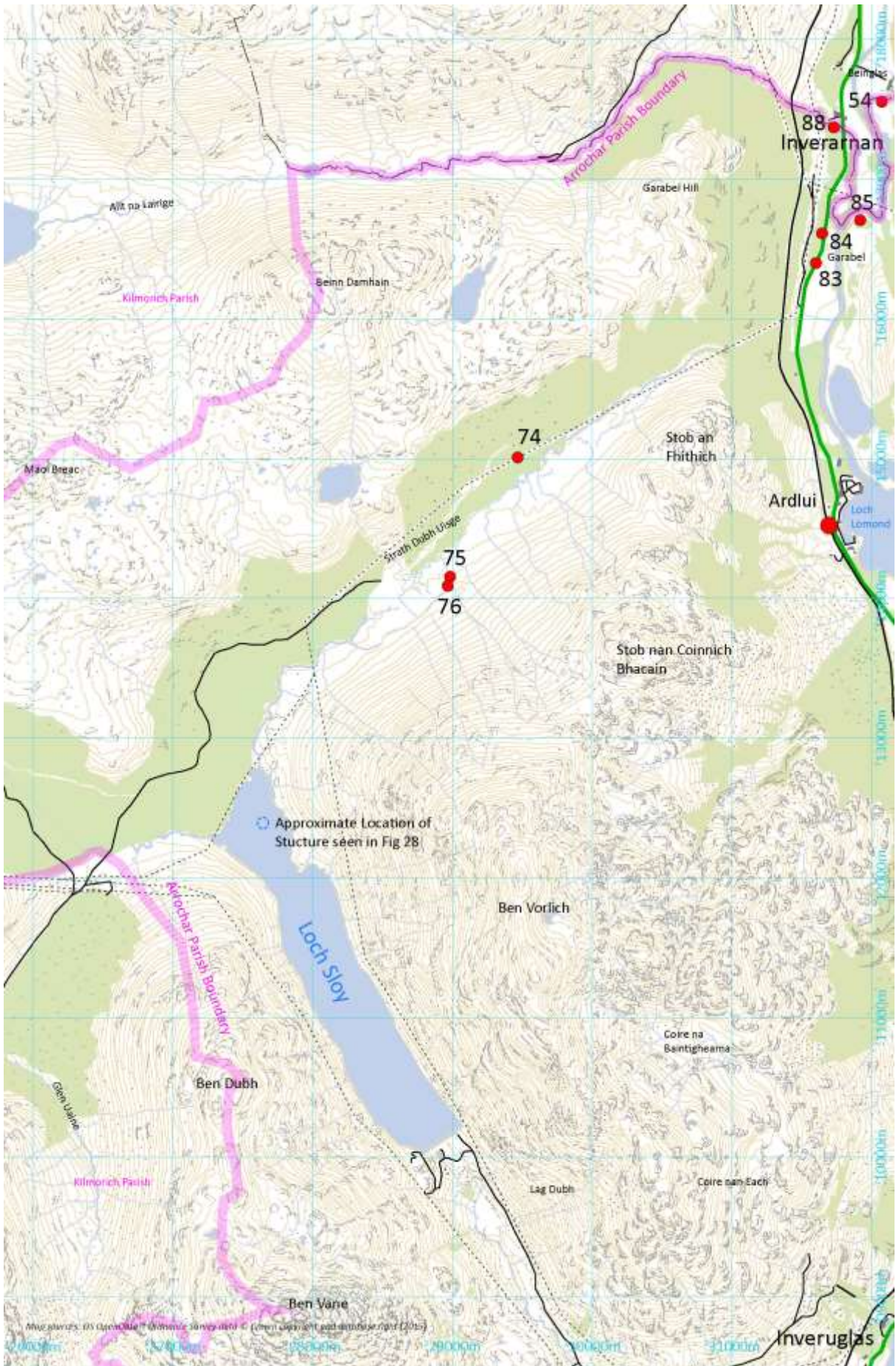
Illus 25: Edgars map of Strath Dubh-Uisge & Loch Sloy

Edgar 1745	Roy (1747-1755)	Ross 1777	1 st edition OS	Explorer 1:25,000	This survey
Bad-golach					
		Garnstuck			
	(Strath Duisk)	(Strathanisk)	(Strath Dubh-uisge)	(Strath Dubh-uisge)	Sites 74, 75 & 76
		Auldleck			
Carn-lyn			Loch Sloy		
Sail					
Cean-Lochan	(Carrgheriachan)				
(Loch-Sloy)		(Loch Sloy)	Loch Sloy	(Loch Sloy (Reservor))	
Ardteascarnish					

Table 6 Historic place-names, Strath Dubh-Uisge & Loch Sloy

The Survey (See Illus 26)

Three sites were recorded along the strath. One site is an irregular shaped enclosure (Site 74) which is probably a sheep fank rather than the remains of a roofed structure. The second is a long rectangular building with at least two rooms, an annex and an adjoining enclosure (Site 75). This site is shown as unroofed on the 1st edition OS map and so was probably abandoned in the early 19th century (see Illus 27). It is tempting to identify this site as the 'shooting lodge in Staduisk' mentioned in the tale of the son of Duncan Dhu and the burning of the Athole men (Fraser 1869, 93). Site 76 consists of three small drystone structures found together, to the SW of Site 75. These may have been shielings, stores or perhaps animal pens.



Illus 26: Location of sites in Strath Dubh-Uisge & Loch Sloy



Illus 27: Site 75, Strath Dubh-Uisge (possible shooting lodge)

This area around Loch Sloy was considered too remote for this phase of survey and currently there is no evidence for the the settlements depicted by Edgar. The settlement of Loch Sloy (as depicted on the 1st edition OS map) now lies beneath the waters of the reservoir and is only visible when the water is particularly low (see Illus 28).



Illus 28: One of the structures of the Loch Sloy visible when the loch level was low (Bing)

6.7 Loch Long: Arrochar - Creagan Sithe

The final section lies at the W edge of the parish, along the E shore of Loch Long and measures about 3km long. The landscape is steeply sloping towards Loch Long from Tullich Hill (632m) and Monadh Tighe na Laraich (447m). The coastline is followed closely by the main road (A814) and the West Highland Railway. Below the railway line the land is generally wooded and above it the vegetation is rough grass. The southern boundary of the parish descends from Tullich Hill and reaches Loch Long between Morlaggan and Creagan Sith.

Historic Maps

Pont's map of Loch Long (No. 16) included the sites of Inneriach (which later became Innerioch House or New Tarbet) and Murlagan. The settlements of Ardmay and Ty-na-lurach are depicted by Edgar, Roy and the 1st edition OS map, although with varying spellings (see Table 6). Ardvaich (Ardveach) is only depicted by Edgar and Roy (see Illus 29).



Illus 29: Edgar's map of Loch Long: Arrochar - Creagan Sithe

The Survey (see Illus 30)

Ten sites were recorded along this stretch of Loch Long (including those outside Arrochar parish). The settlement of Creagan Sithe was visited and recorded although it is not within the parish. Two rectangular structures (Sites 68 & 70) and a turf dyke (Site 69) sit on the steep W facing slope overlooking Loch Long at

Creagan Sithe. The 1st edition map shows one roofed and one unroofed structure, indicating that the site was possibly still occupied in the mid 19th century. Two circular hollows on the hill side nearby (Sites 71 and 72) may be the remains of shelters or natural tree throws. Two rectangular-shaped platforms lie next to the road within dense forestry (Site 73). These are shown as roofed structures on the 1st edition OS map with an enclosure nearby. High Morlaggan has already been the subject of survey and excavation and so was not included in this survey (see <https://highmorlaggan.co.uk/>).

<i>Pont 16 (late 16th century)</i>	<i>Edgar (1745)</i>	<i>Roy (1747-1755)</i>	<i>Ross (1777)</i>	<i>1st edition OS (1860)</i>	<i>Explorer 1:25,000</i>	<i>This survey</i>
(Errawharr)					Arrochar	
Inneriach	New-Tarbet	New Tarbet	New Tarbet			
	K' (=Kirk)		Erchar Church			
				Tayness Cottage	Tighness	
		Miln		Benreoch House	Benreoch House	
				Manse	Hotel	
	Ardveach	Ardvaich				
	Ty-na-lurach		Tynalarach	Tigh na Làraich		Sites 64, 65, 66, 67
				Rudha Glas	(Rudha Glas)	
	Ard-may	Ardmage	Ardmay	Ardmay	Ardmay House	
Murlagan	Mure-lagan	Morlichan		High Morlaggan		
				Morlaggan	Morlaggan	
				<i>Creagan Sithe</i>	<i>Creagan Sithe</i>	<i>Sites 68, 69, 70, 71, 72, 73</i>
<i>Gortann</i>		<i>Gortons</i>	<i>Gartan</i>	<i>Gorten</i>	<i>Craggan</i>	

Table 6 Loch Long: Arrochar - Creagan Sithe (sites in italics are not in Arrochar parish)

Further N, at Tigh na Laraich, there is a substantial, multi-celled, drystone-built sheepfold sitting on a W facing slope (Site 66). It has several blocked entrances indicating that its function has changed over time. Cruck-slots in the walls (for supporting roof timbers) can be seen within a 'room' in the NW corner, suggesting that this had originally been a roofed structure that was incorporated into a later sheepfold. An earth and stone bank curves around from the NW corner of the sheepfold to meet a head dyke, forming a large enclosure that probably predates the sheepfold, perhaps contemporary with the earlier structure. It is possible that the original 18th century settlement of Tigh na Laraich, consisting of a structure, enclosure and a field, was incorporated into a later sheepfold.

On the hillside above Site 66, there is a sub-rectangular shieling (Site 64). Above this again, tucked between the cliff face and a large boulder is a D-shaped structure (Site 65). This may have been a shieling or perhaps, because of its hidden nature, a whisky still. There was no stream nearby which could have supplied a permanent source of water, but perhaps water could have been collected as run off from the cliff nearby. A rectangular structure (Site 67) abutts a field bank and between the sheepfold (Site 66) and rectangular structure (Site 67), there is a clearance cairn and an area of rig and furrow.

A mill is depicted by Roy to the SW of Arrochar, in an area that is now built over, in the vicinity of Benreoch House.



Illus 30 Location of sites between Ardrochar and Creagan Sithe

7. Discussion

This survey has been very successful in identifying many new archaeological sites within Arrochar parish that relate to occupation by the Macfarlane clan. The less steeply sloping land, close to the loch sides and in the valleys, where cultivation is possible, have been utilised since at least the medieval period for settlement and farming, if not even further back in time. The levels of the sea and loch have changed since prehistoric times and this will have affected the location of settlement and our ability to find them. The upper slopes of the surrounding hills were more suited to summer pasture than permanent settlement, although the upper limit of permanent settlement would have varied under the effect of a changing climate and population pressure. Because of their ruinous state and without excavating them, it is generally not possible to be sure whether these structures functioned as houses, barns, byres, stores or temporary shielings. At Gartanfaired, however, one structure (Site 22) aligned N-S across the gradient was tentatively interpreted as a threshing barn as the opposing doorways would have provided a through draught. Excavation would reveal floor layouts with drains, hearths and artefacts which would assist with their interpretation. The sites of Greitnein and Gartanfaired (Sites 18 and 22) are two good examples of joint tenancy farms for which there are documentary references suggesting that they were occupied from at least the mid-17th century until the early 19th century.

Another aim of the project was to look for strongholds associated with the clan chiefs. The only site which could possibly be described as such, lies at the top end of Loch Lomond on a promontory between Ardlui and Ardleish (Site 86, 'Ylen Eaunlich'). An island of outcropping bedrock, surrounded by water or boggy ground would have provided some degree of defense and Pont indicated that it was occupied by a dwelling in the late-16th century. The visible ruins on this promontory may be 18th or early 19th century in date, but they could well be sitting on top of earlier medieval structures.

The discovery of a rectangular structure near the shore opposite Island Y Vow (Site 28) is particularly interesting as this could be the almshouse built by a Macfarlane chief in the 16th century. Such a structure may have been built with sandstone mouldings and mortar rather than being a drystone building like the surrounding vernacular buildings. The remains found at Creag a'Phuirte are low and covered with turf so it was not possible to see whether the structure is mortared or not, however, the regularity of the walls would suggest that it was a well-built, if not particularly large, structure.

Medieval water mills are rare in the Scottish landscape and are likely to have been of the horizontal, click mill type utilising local streams. The substantial mills that do survive are 18th or 19th century vertical types which were fed by a lade. The site at Port a Chaipuill (Site 81) has been examined already and so is not discussed further here. However, the ruins of a mill at Camas nan Clais on the shores of Loch Lomond (Site 44/46) had not previously been identified. Given its probable late date and the presence of a lade, we can assume it was of the latter type. Given its location beside a wooded area and the loch, perhaps an interpretation as a timber mill can be considered. However, within Glen Douglas, a square-shaped tumble of stones (Site 13) lay beside a stream and a tentative interpretation was put forward that this was a click mill, although there was no other visible evidence for this. The evidence for a mill at Arrochar comes from the historic maps and it would be worth investigating the vicinity of the stream beside Benreoch House to see if there is any physical evidence.

Whisky stills are another interesting feature of the Scottish landscape which are difficult to identify. The copper still and worm may not be in place, but the hidden nature of the site and presence of a water supply would be clues to their location. During this survey two possible sites were suggested (Sites 4 and 65), although Site 64 did not appear to have a good water supply.

The third aim was to examine the potential for historical research and so far the five volumes of the Hill Collection have been digitally photographed and made available to Clan Macfarlane Worldwide. The scale of the work required to catalogue and assess these papers is considerable. The historic research undertaken by Rhona Macfarlane and Alistair McIntyre on aspects of the Arrochar parish was generously made available to this project and clearly shows what information is available and what it can contribute to our understanding of

the history of these sites. In addition, a great deal of work on the place names of Arrochar was carried out by the local community as part of the Hidden Heritage Project, with advice from Dr Simon Taylor (Carmichael *et al* undated) and this could usefully be expanded to include further sites.

This document is a report on a project that is very much 'a work in progress' and it is hoped that further seasons will illuminate the history of the Macfarlane clan by revealing more sites and discovering details of their everyday life.

8. Recommendations

This field survey has produced an extensive list of ruined sites which are a representative sample of all the potential sites. Excavation of some of these sites would provide evidence for when and how these structures were used which would illuminate daily life in the past.

The sites which are potentially of some antiquity include -

1. Site 28: possible 16th century almshouse at Creag a'Phuirte.
2. Site 86: promontory site of Ylen Eaunlich. Possibly 18th and 19th century structures overlie 16th century buildings.
3. Site 61: Blaeberry House. A possible late medieval or 18th century house.
4. Site 66: Tigh na Laraich. A possible late medieval or 18th century house, later incorporated into a sheepfold.
5. Sites 18: joint tenancy township of Greitnein in Glen Douglas.
6. Site 22: joint tenancy township of Gartanfaired in Glen Douglas.
7. Sites 11-15: possible joint tenancy township and mill near Inverbeg, in Glen Douglas
8. Site 88: structure at 'Spittle of Inverarnan' which might be a hostelry.

The Hill Collection is a relatively untapped resource which could provide much useful detail on clan affairs. Professional assistance could be sought to produce a catalogue and some initial assessment of their research potential.

Further research could be undertaken on the Census records, rentals and other historical sources. This could provide more information on the place names, the names of the tenants, the value of the farms, their produce and perhaps suggest why they were abandoned.

Further walkover survey could also be carried out in certain areas, including where historic maps suggest the presence of settlement, and in the more remote and lochside areas not already visited.

9. List of Sources

Maps and Online Sources

William Edgar, 1745. *The Course of the Kings Road making betwixt Dumbarton and Inverary* (Dumbarton Library).

Timothy Pont, (No. 17) Loch Lomond & (No. 16) *Gare Loch, Loch Long and Holy Loch*, National Library of Scotland. For accompanying transcripts see <http://maps.nls.uk/pont/texts/transcripts/ponttext150v-151r.html>.

Charles Ross, 1777 *A map of the Shire of Dumbarton* (National Library of Scotland).

William Roy, 1747-52 *Military Map of Scotland* (National Library of Scotland).

OS 6 inch to one mile, 1860, First edition.

OS 6 inch to one mile, 1900 *Index of counties of Dumbarton, Perth & Stirling* (parish boundaries).

Documentary Sources

- Carmichael E, Wotherspoon I, King L & Bray A (undated) *Gaelic Place Names of Arrochar Parish, a guide to the meanings behind the names.*
- Dewar, J 1964 Vol. 1 *Scottish West Highland Folk Tales.*
- Chalmers, G 1824 *Caledonia or an Account Historical and Topographical of North Britian from the Most Ancient to the Present Times.* Volume III.
- Fraser, Sir W 1869 *The Chiefs of Colquhoun and their country,* Volume 2. Edinburgh.
- W H Hill Collection, The Royal Faculty of Procurator's Library, Nelson Mandela Square, Glasgow.
- James, H F 2014 *Hidden Heritage of a Landscape: Vengeful Vikings and Restless Rustlers.* Northlight Heritage Report No 79.
- James, H F 2015 *Tarbet Isle, Loch Lomond.* Northlight Heritage Report No 121.
- Johnson-Smith, D J 2002 *"Barbarous, and yet mixed with some shew of civilitie:" The Clan MacFarlane of North Loch Lomondside c.1570-1800.* University of Glasgow unpublished MA Thesis.
- Niven, P 2011 *Gaelic place-names and the social history of Gaelic speakers in Menteith.* Unpublished PhD thesis University of Glasgow.
- Starbuck, D R 2011 *An Archaeological Survey of Inveruglas Farm: A search for Clan MacFarlane.* Institute for New Hampshire Studies, Plymouth State University, USA.
- Walker, F A 2000 *The Buildings of Scotland: Argyll and Bute.*
- Whyte, D 1988 *Walter MacFarlane Clan Chief and Antiquary.* Aberdeen and North East Scotland Family History Society, Aberdeen.

10. Acknowledgements

Many thanks are due to Preston McFarland and Peter McFarlin for commissioning the project on behalf of Clan Macfarlane Worldwide. The volunteers who accompanied the author and assisted with the recording were Ian Marshall, Fiona Jackson, Sue Furness, Libby King, Margaret Gardiner, Irene Wotherspoon, Jennifer Rees, Valerie Brown, Wendy Raine, Craig Stanford, Katherine Price, Oliver Rusk, Elaine Black, Christine McDiarmid, Helen Maxwell, Rhona Macfarlane, Susan Hunter, Janie Munro and Fran Crumley. Illustrations 5, 7, & 20, were surveyed by various members of the volunteer team and were then inked up by Ian Marshall. Peta Glew annotated the survey drawings for this publication and produced the location maps. Alistair McIntyre and Rhona Macfarlane generously made some of their research available to this project and Rhona also kindly acted as guide to visiting Macfarlanes from the USA. James Fisher provided very useful information on access into Strath Dubh Uisge. Sue Furness and Fiona Jackson have made helpfull comments on this report and continued surveying, finding new sites, some of which have been added to this report. Details of Edgar's maps are included below thanks to Fional Jackson, Susan Furness and Dumbarton Library.

11. Appendices

APPENDIX 1: Site List

Site No.	Location	Description		Easting	Northing	Comments
1	Stuck na Cloich	Remains of four drystone structures and a kiln.	NN	32498	02500	Farmstead. Known locally as the 'Black' or 'Plague' village. Stuckanclaigh is depicted by Ross of 1777. Not shown on the 1st edition OS map. Surveyed by DJ Johnson-Smith (2011).
2	Hollybank	Two celled structure on a slight mound on E facing slope. (Dimensions not recorded).	NN	32466	02332	House/barn/byre
3	Hollybank	Earth bank seen for about 28m long.	NN	32653	02214	One example of similar banks in the vicinity.
4	Hollybank	Short length of walling by a stream	NN	32814	02022	Possibly protection for a still
5	Hollybank	Quarry scoop measuring 5m by 3m. On top of a slight knoll in open ground.	NN	33036	01845	Small quarry
6	Hollybank	Enclosure 16m by 10m defined by earth banks on an E facing slope.	NN	33027	01814	There are several earth banks seen on the aerial photographs in the vicinity, but no other structures seen.
7	Inverbeg	Rectangular structure on S facing slope, measures 5.8m by 3.5m externally with possible entrance on the E side.	NS	34117	97908	House/barn/byre
8	Inverbeg	Rectangular structure measuring 7.8m by 3.8m externally, aligned E-W, on a S facing slope.	NS	34112	97891	House/barn/byre
9	Inverbeg	Grass covered stone platform measuring 3.5m by 4.2m.	NS	34087	97975	Modern platform
10	Inverbeg	concrete platform	NS	34077	97976	Modern platform
11	Inverbeg	Rectangular structure of low grass covered earth and stone banks measuring 15.5m by 5.2m externally, aligned N-S. W wall is bowed so centre is 6m wide. Possible doorway on the E side.	NS	33852	97957	House/barn/byre
12	Inverbeg	Revetted terrace about 10 to the W of Site 11.	NS	33819	97957	Walling for a terraced field.
13	Inverbeg	Square structure measuring 7.6m by 4.6m externally, consisting of large tumbled stones located beside a stream on valley floor	NS	33642	97974	Possible mill?

Site No.	Location	Description		Easting	Northing	Comments
14	Glen Douglas	Circular kiln measuring 6m in diameter externally with a bowl 1.8m in diameter. Structure up to 0.75 m high. On a S facing slope.	NS	33546	97960	Kiln. This and Site 15 depicted as two unroofed structures on 1 st edition OS map (see also NS 39NW12).
15	Glen Douglas	Rectangular structure measuring 9.3m by 4.5m externally on S facing slope in an area of rig. Large drystone rubble. Two possible doorways in the S side. Maximum height of 0.8m.	NS	33546	97982	House/barn/byre (see NS39NW12).
16	Glen Douglas	Rectangular structure measuring 11.5m by 5.5m externally next to a stream on a S facing slope near to the road. Drystone walling with possible entrance on the E side.	NS	32471	97910	House/barn/byre (see NS39NW11).
17	Glen Douglas	Rectangular stone platform 5.8m wide with a semi-circular extension 2m wide beside a ditch. On a slight S facing slope in valley bottom. Large rounded boulders and stones on the surface.	NS	32464	97869	Building platform?
18	Glen Douglas (Greitnein)	Four structures and two enclosures seen on a S facing slope within forestry, S of the forest track. Internal corners of structures are square. Structure A measures 11.4 by 4.4m externally. Structure B measures 8.8m by 4.2m externally. Enclosure C measures 23m by 18m. Enclosure D measures 28m by 6.5m. Structure E measures 15.6m by 4.7m externally. Doorway on the S side. Structure F measures 9.7m by 3.3m externally.	NS	32533	98030	Farmstead. Recorded on Canmore as three unroofed structures (NS 39NW11). Not shown on 1st edition so was ruined by mid-19th century. Unnamed settlement in Glen Douglas shown on Ross (1777). Rental of 1784 mentions 'Greitnein' in this vicinity. Edgar's map of 1745 shows 'Greitnein' in Glen Douglas. House/barn/byres.
19	Glen Douglas	Boulders and smaller stones forming a mound on S facing slope, 5m from a bank and ditch. Oval shape measuring 4m by 5m.	NS	32044	98175	Clearance cairn
20	Glen Douglas	Oval shaped structure, low stone footings measuring 6m by 3.1m.	NS	31965	98194	Shieling or a store
21	Glen Douglas	Oval shaped structure, low stone and turf footings measuring 5.5m by 1.5m. Doorway in the SW side.	NS	31861	98270	Shieling

Site No.	Location	Description		Easting	Northing	Comments
22	Glen Douglas (Gartanfaired)	Rectangular structure measuring 9.5m by 5.4m with a possible entrance in the NE wall. Aligned N-S downslope.	NS	31561	98397	Possible threshing barn. See also Sites 23, 24, 25, 26, 27 & 33. Edgar's map of 1745 shows 'Gartanfearn' in this vicinity. Rental of 1784 mentions 'Gartanfaired' in this vicinity.
23	Glen Douglas (Gartanfaired)	Rectangular structure measuring 15m by 5.5m externally, aligned E-W. Footings up to 1.1m high of turf. Possible cross-wall near the W end.	NS	31540	98394	See also Sites 22, 24, 25, 26, 27 & 33. Edgar's map of 1745 shows 'Gartanfearn' in this vicinity. Rental of 1784 mentions 'Gartanfaired' in this vicinity.
24	Glen Douglas (Gartanfaired)	Large boulder beside the road with a circular depression.	NS	31527	98392	Knocking stone for preparing mash/ b??? See also Sites 22, 23, 25, 26, 27 & 33. 'Gartanfaired'
25	Glen Douglas (Gartanfaired)	Two connected circular hollows. One measuring 4.4m by 4.0m and the other measuring 4.5m by 2.0m.	NS	31522	98415	Kiln barn? See also Sites 22, 23, 24, 26, 27 & 33. 'Gartanfaired'
26	Glen Douglas (Gartanfaired)	Rectangular enclosure measuring 16.7m by 14.8m enclosed by high earth and stone banks. Encloses a series of lazy beds aligned N-S with the slope.	NS	31508	98438	Kale yard. See also Sites 22, 23, 24, 25, 27 & 33. 'Gartanfaired'.
27	Glen Douglas (Gartanfaired)	Oval shaped structure with low turf and stone footings. Measures 8.5m by 5.5m externally. Rounded corners.	NS	31535	98380	House or byre. See also Sites 22, 23, 24, 25, 26 & 33. Gartanfaired.
28	Creag a'Phuirte	Rectangular structure. Low stone footings measuring 5.2m by 3.8m externally on a grass covered headland with fairly easy access from the road. A wall 5m to the W lies on the edge of the loch. There are places nearby for pulling up small boats.	NN	32755	12881	Possible 16 th century almshouse or fisherman's bothy.
29	Creag a'Phuirte	D-shaped structure built up against a large boulder measuring 3.1m by 2.8m. Located about 10m from the Loch.	NN	32824	12948	Shieling or temporary shelter.
30	Creag a'Phuirte	Road revetment consisting of rough cut boulders. Measuring 4m high and seen for a length of about 3.6m with concrete supports.	NN	32841	12965	Road support
31	Creag a'Phuirte	Terrace 5m wide about 3m below the contemporary A82. Seen for about 50m in length.	NN	32857	12989	Old road line or construction terrace.

Site No.	Location	Description		Easting	Northing	Comments
32	Blarstainge	Deserted settlement.	NN	324	173	Farmstead as described by DJ Johnston (2011).
33	Glen Douglas	Platform measuring 8.5m by 18.5m upon which there is rig and furrow and some indeterminate stone and turf footings.	NS	31548	98396	Cultivation and enclosure, possible small structure. See also Sites 22, 23, 24, 25, 26 & 27. Gartanfaired.
34	Glen Douglas	Oval shaped turf footings, and large boulder in E corner. Measures 6m by 3m. Possibly open to the W.	NS	31243	98567	Shieling or store
35	Glen Douglas	Boulders and stones forming an oval-shaped heap, 5m by 2m.	NS	31217	98513	Clearance cairn
36	Glen Douglas	Turf and stone bank, snaking. 1.5m wide and up to 1.2m high. S of the road with rig and furrow to the NE.	NS	31080	98625	Field bank.
37	Glen Douglas	Sub-circular turf and stone structure measuring 5.5m by 4.5m and up to 0.3m high. Near to the road.	NS	31081	98641	Shieling
38	Glen Douglas	iron wheeled axel	NS	31066	98620	Farm implement
39	Glen Douglas	Oval-shaped turf and stone structure measuring 6m by 4m externally, up to 0.2m high. Entrance on S side.	NS	31033	98695	Shieling
40	Glen Douglas	Rectangular shaped turf banks of a rectangular structure measuring 3.6m by 2.4m with a possible entrance in the SW side.	NS	31025	98699	Shieling
41	Glen Douglas	Circular structure measuring 3m in diameter	NS	30020	99217	Shieling
42	Glen Douglas	Stone pile 3m in diameter	NS	30026	99206	Clearance cairn
43	Glen Douglas	Circular feature on S facing slope. Measures 5m by 4m	NS	30033	99190	Shieling
44	Camas nan Clais	Stone lined water channel	NS	34138	99325	Old mill lade
45	Camas nan Clais	D-shaped hollow with a slight bank on the downslope side. Measures 5.7m by 4.8m.	NS	34146	99487	Shieling or tree throw?
46	Camas nan Clais	Stoney banks forming D-shaped structure measuring 8m by c5m externally. Lots of stones in the vicinity.	NS	34153	99357	One of old mill buildings that has been demolished Shown as unroofed on 1st edition OS map.
47	Ardvorlich	Revetted track 4m long and 0.6m high	NN	32351	12427	Revetment. Evidence for utilisation of the hillside

Site No.	Location	Description		Easting	Northing	Comments
48	Ardvorlich	Rectangular structure measuring 5.0m by 3.3m externally with walls up to 0.7m high. A twinning pen has been inserted into an earlier structure. On a SE facing slope within a larger enclosure and beside a stream.	NN	32221	12239	Shieling, shepherds shelter.
49	Ardvorlich	Rectangular structure measuring 5.5m by 4m externally, with an entrance in the W side. Located on a small terrace above a steep slope.	NN	32274	12217	Shieling
50	Ardvorlich	Concrete platform, with steps and some brick settings.	NN	32568	11882	Second WW facility?
51	Ardvorlich	Drystone structure with maximum height of 1m, with a later annex. Located within a private garden.	NN	32473	12054	House. Part of original Ardvorlich settlement.
52	Ardvorlich	Two stone piers on either side of a small stream. Road surface can be seen continuing in either direction.	NN	32442	12006	Ruined bridge (Caulfield Military Road)
53	Stuckama/Benglash	Ford of large stones and boulders.	NN	32065	18304	Fording point for road from E side of River Falloch to join the road down the W side of Loch Lomondside.
54	Stuckama	Large structure measuring 14.6m by 7.4m with blocked doorways, and dressed stone round the doorways. Surrounded by humps and bumps and possible building platforms.	NN	32071	18554	Large dwelling 19th century at 'Stuckama'. Lead furnace mentioned on Edgar's map in 1745. Building platforms may relate to the 18 th century settlement.
55	Blarstainge	Rectangular unroofed structure 7.9m by 4.0m externally abutting the field wall. Entrance to the W. On a W facing hillside.	NN	32467	17147	House. Sits above Blarstainge settlement
56	Ardleish	Deserted settlement, mostly unroofed, substantial buildings, corrugated iron cottage, knocking stone.	NN	32690	15540	Settlement of Ardleish. Shown as three roofed structures and a sheep pen on 1 st edition OS map.
57	Ardleish	Very low remains of a rectangular structure measuring about 6m by 5.5m with a line of stones extending for another 16.9m. Moss covered. Remains difficult to correspond to the 1 st edition remains.	NN	32628	15584	Structure. Shown as roofed on 1 st edition OS map in field to the NW of Ardleish.

Site No.	Location	Description		Easting	Northing	Comments
58A	Tighfurl	Rectangular structure measuring 8.5m by 4m externally with walls 0.7m wide. Door way to the S and possibly opposing doorway to the N.	NN	32384	15785	House/barn/byre. Shown as unroofed on the 1 st edition OS map. Perhaps a barn with opposing doorways.
58B	Tighfurl	Structure measuring 11.6m long and 5.2m wide externally with an entrance to the W and a small annex 2m long on the S side. Has a rounded N end and square S end.	NN	32400	15778	House/barn/byre. Shown as unroofed on the 1 st edition OS map
58C	Tighfurl	D-shaped enclosure created by a revetment and a wall of large boulders. Measuring about 13m by 21m. Entrance to the NE facing Structure 58B.	NN	32384	15770	Shieling. Not shown on the 1 st edition OS map
58D	Tighfurl	Oval structure measuring 5m by 4.4m.	NN	32403	15780	Shieling. Not shown on the 1 st edition OS map. Probably a shieling.
59	Tighfurl	Sub-rectangular structure measuring 8.8m by 5.3m externally and walls 0.7m wide. One or two courses of stones high.	NN	32406	15845	House/barn/byre. Not shown on the 1 st edition OS map. Possibly a shieling.
60	Tighfurl	Rectangular structure measuring 7.5m by 3.8m externally. Abutting a field wall.	NN	32392	15881	House/barn/byre. Shown as unroofed on the 1 st edition OS.
61	Blarstainge	Sub-rectangular structure measuring 8.5m by 3.8m internally with walls about 0.8m thick. Square corners internally but externally the corners are rounded. Two mature oak trees are growing within it. It sits on a wooded knoll on a steep W facing slope above the river. Blaeberrys growing around the structure.	NN	32193	17505	House/barn/byre. Shown as unroofed on the 1 st edition OS map.
62A	Blarstainge	Rectangular structure measuring 5.6m by 2.7m internally with walls 0.9m thick. Three courses of stone 0.7m high. Two rooms and doorway to the W.	NN	32528	17592	House/barn/byre. Shown as unroofed on the 1 st edition OS map.
62B	Blarstainge	Rectangular structure measuring 4m by 2.2m internally with walls 0.6m wide. Two rooms with door to the S.	NN	32528	17672	House/barn/byre. Shown as unroofed on the 1 st edition OS map.
62C	Blarstainge	Outside the enclosure to the N. Measures 6.7m by 3m internally with walls 0.9m wide. Three courses up to 0.7m high. Lambing pen in S wall and doorway in the SE.	NN	32480	17738	House/barn/byre. Shown as unroofed on the 1 st edition OS map.

Site No.	Location	Description		Easting	Northing	Comments
62D	Blarstainge	Small rectangular structure measuring 6.7m by 4m externally with entrance to the E. Lies 2m to the W of Site 62C.	NN	32475	17738	House/barn/byre. Not show on 1 st edition.
62E	Blarstainge	Sub-rectangular structure measuring 6.5m by 3.6m.	NN	32535	17557	House/barn/byre. Not show on 1 st edition.
63	Blarstainge	Small D-shaped drystone lambing pen built up against a large erratic.	NN	32539	17557	Shieling. Not show on 1 st edition.
64	Tigh na Laraich	Sub-rectangular structure measuring 7.3m by 4.3m externally with walls 1.0m wide and up to 1.0m high. Two cells and entrance to the S. Four courses of walling.	NN	29136	02630	Shieling
65	Tigh na Laraich	D-shaped structure abutting a large boulder, measuring 3.4m by 2.2m internally.	NN	29150	02597	Shieling
66	Tigh na Laraich	Multi-celled, stone built sheepfold.	NN	29026	02846	Abandoned sheepfold. Depicted on the 1 st edition OS map and clearly seen on aerial photographs.
67	Tigh na Laraich	Sub-rectangular structure measuring 9.4m by 6.7m externally with walls 0.8m wide. Abutted by the field bank. Entrance to the S and an aumbry noted in the E wall.	NN	29115	02938	House/barn/byre. Structure pre-dated the field dyke.
68	Creagan Sithe	Rectangular structure measuring 9.5m by 4.7m externally with walls 0.7m wide and up to 1.1m high. Plus a small annex on the S end.	NN	27133	00389	House/barn/byre. Within woodland. Unroofed on 1 st edition OS.
69	Creagan Sithe	Turf covered bank measuring 0.8m wide and up to 1.0m high.	NN	27203	00320	Enclosure bank within woodland, part of Sites 68 and 70. .
70	Creagan Sithe	Rectangular structure measuring 9.7m by 5.4m externally with walls 0.8m wide and up to 1.8m high.	NN	27137	00383	House/barn/byre. Within woodland. Roofed on 1 st edition OS.
71	Creagan Sithe	Circular hollow about 4m in diameter with a small bank on the downslope side.	NN	27135	00449	Possibly a tree throw or shelter?
72	Creagan Sithe	Circular hollow about 5.5m in diameter with a small bank on the downslope side.	NN	27185	00481	Possibly a tree throw or shelter?
73	Creagan Sithe	Flat platform measuring 15m long and 5m wide with a number of large boulders and possibly lines of stones indicating walls.	NN	27045	00475	Platform for a roofed structure seen on the 1 st edition OS map.

Site No.	Location	Description		Easting	Northing	Comments
74	Strath Dubh-Uisge	Sub-rectangular enclosure measuring 8.8m by 5m and walls up to 1.1m high.	NN	29466	16009	Sheep fank
75	Strath Dubh-Uisge	Rectangular building with two compartments measuring 15.6m by 4.5m overall. A D shaped enclosure on the S side and a small rectangular annex and further walling on the N side.	NN	28983	15155	House/barn/byre. Shown as an unroofed structure on the 1 st edition OS map. Probably abandoned in the early 19 th century.
76	Strath Dubh-Uisge	Three small sub-rectangular structures near to Site 75. A = 3.8m by 1.9m, B = 2.8m by 2.9m and C= 4.5m by 3.7m.	NN	28966	15090	Shielings, stores or animal pens.
77	Inverhoulin	Rectangular structure measuring 16.9m by 5.7m externally. Wall width 0.9m and height 0.8m max. Three compartments with two possible doors. Structure has square corners. Lazy beds nearby and two enclosures nearby.	NN	32922	05977	House/barn/byre. No depicted on the 1 st edition OS map so likely abandoned before the early 19 th century.
78	Inverhoulin	Rectangular structure measuring 11.5 m by 3.6m just discernable within the woodland at the edge of the car park.	NN	32916	06068	House/barn/byre. This structure is marked as roofed on the 1 st edition OS map, but not on the second edition. Presumably demolished in the late 19 th century.
79	Inverhoulin	Occupied cottage	NN	32933	06119	House. Weavers Cottage
80	Blairannaich	Remains of bridge	NN	32739	06247	Bridge. Demolished remains of an old bridge on old road.
81	Port a Chaipuill	Unroofed ruins of a mill	NN	31993	09241	Mill. see Starbuck 2011.
82	Port a Chaipuill	Structure in woodland, known locally as 'toll keepers house' and said to have been used as a hut in the 1940s (Starbuck 2011, 80).	NN	31976	09003	House. Shown as unroofed on 1st edition. Presumably re-occupied.
83	Garabal	Three structures and an enclosure on the E side of the road. Buildings are unroofed and one has a sandstone fireplace.	NN	31600	17400	Farmstead. Probably a high status tacksmans house with the fireplace. 'Garbail' place name recorded 1745 (Edgar).
84	Garabal	Several structures. Late 19th and modern buildings, unroofed.	NN	31644	17612	Farmstead. Not shown on the 1 st edition OS map and shown as roofed on the second edition.
85	Blarstainge	Drystone rectangular structure with a doorway to the N towards the river with buttressing on either side. Structure measures 9.5m long and 5.5m wide externally.	NN	31917	17706	House/barn/byre. Unroofed structure shown on 1 st edition OS on a curve in the River Falloch.

Site No.	Location	Description		Easting	Northing	Comments
86	Blarstainge	Tree covered hillock at the end of a promontory, with low remains of two drystone structures visible amongst the numerous large stones lying on the surface. One of these structures measures 9.5m by 4m externally with no visible doorway, and the other measures 8.3m by 4.5m with a door on the W side. Further lines of stones around the SE corner may indicate a building platform or an earlier structure. Roof slates visible. Large yew tree present.	NN	32191	15766	Two unroofed structures shown on the 1 st edition OS map. Presumably abandoned in the early 19 th century. Possibly <i>Yle Eunlich</i> (Pont) or <i>Ellan Henrig</i> (Ross).
87	Monachoil	Remains of a single rectangular drystone structure measuring 7.2m x 3.8m, aligned NW-SE. Possible entrance on NE side	NN	30610	08940	Only known from Edgar's map (1745). 1-2 courses of stones, very overgrown with moss, and beneath fallen trees. No other obvious structures in vicinity, but difficult to see because of extensive tree fall. House/barn/byre.
88	Spittle of Inverernan	Rectangular structure with annex at either end. Walls about 0.9m thick. Central room is about 10m by 5m and annex to the SE is about 5m by 5m. U-shaped open fronted annex to the NW is of a similar size.	NN	31740	18370	'Spittal' is name for place providing hospitality along a thoroughfare. This structure is multi-period so may have been converted for later agricultural use.

APPENDIX 2: Digital Photograph list

File name	Site No.	Name	Description	Date
457_Macfarlane_1	1	Stuck na Cloich	Farmstead	20/03/2016
457_Macfarlane_2	1	Stuck na Cloich	Farmstead	20/03/2016
457_Macfarlane_3	1	Stuck na Cloich	Farmstead	20/03/2016
457_Macfarlane_4	1	Stuck na Cloich	Farmstead	20/03/2016
457_Macfarlane_5	1	Stuck na Cloich	Farmstead	20/03/2016
457_Macfarlane_6	1	Stuck na Cloich	Farmstead	20/03/2016
457_Macfarlane_7	1	Stuck na Cloich	Farmstead	20/03/2016
457_Macfarlane_8	1	Stuck na Cloich	Farmstead	20/03/2016
457_Macfarlane_9	1	Stuck na Cloich	Farmstead	20/03/2016
457_Macfarlane_10	1	Stuck na Cloich	Farmstead	20/03/2016
457_Macfarlane_11	1	Stuck na Cloich	Farmstead	20/03/2016
457_Macfarlane_12	1	Stuck na Cloich	Farmstead	20/03/2016
457_Macfarlane_13	1	Stuck na Cloich	Farmstead	20/03/2016
457_Macfarlane_14	1	Stuck na Cloich	Farmstead	20/03/2016
457_Macfarlane_15	1	Stuck na Cloich	Farmstead	20/03/2016
457_Macfarlane_16	1	Stuck na Cloich	Farmstead	20/03/2016
457_Macfarlane_17	1	Stuck na Cloich	Farmstead	20/03/2016
457_Macfarlane_18	1	Stuck na Cloich kiln	Farmstead	24/03/2016
457_Macfarlane_19	2	Hollybank	Two celled structure	24/03/2016
457_Macfarlane_20	2	Hollybank	Two celled structure	24/03/2016
457_Macfarlane_21	2	Hollybank	Two celled structure	24/03/2016
457_Macfarlane_22	2	Hollybank	Two celled structure	24/03/2016
457_Macfarlane_23		Team crossing stream		24/03/2016
457_Macfarlane_24		Team crossing stream		24/03/2016
457_Macfarlane_25		Team crossing stream		24/03/2016
457_Macfarlane_26		Team crossing stream		24/03/2016
457_Macfarlane_27		Team crossing stream		24/03/2016
457_Macfarlane_28		Team crossing stream		24/03/2016
457_Macfarlane_29	3	Hollybank	Earth bank	24/03/2016
457_Macfarlane_30	3	Hollybank	Earth bank	24/03/2016
457_Macfarlane_31	4	Hollybank	Wall	24/03/2016
457_Macfarlane_32	4	Hollybank	Wall	24/03/2016
457_Macfarlane_33	4	Hollybank	Wall	24/03/2016
457_Macfarlane_34	4	Hollybank	Wall	24/03/2016
457_Macfarlane_35	5	Hollybank	Quarry scoop	24/03/2016
457_Macfarlane_36	5	Hollybank	Quarry scoop	24/03/2016
457_Macfarlane_37		Team crossing stream		24/03/2016
457_Macfarlane_38		Team crossing stream		24/03/2016
457_Macfarlane_39		Team crossing stream		24/03/2016
457_Macfarlane_40		Ian in cafe		24/03/2016
457_Macfarlane_41		Ian in cafe		24/03/2016
457_Macfarlane_42	1	Stuck na Cloich		24/03/2016
457_Macfarlane_43	1	Stuck na Cloich		24/03/2016
457_Macfarlane_44		Ian in cafe		24/03/2016
457_Macfarlane_45		Ian in cafe		24/03/2016
457_Macfarlane_46		Margaret, Elaine & Libby		24/03/2016
457_Macfarlane_47		Team, Wendy, Libby, Jennifer, Craig & Ian		25/03/2016
457_Macfarlane_48		Team, Wendy, Libby, Jennifer, Craig & Ian		25/03/2016
457_Macfarlane_49	7	Inverbeg	rectangular shieling	25/03/2016
457_Macfarlane_50	7	Inverbeg	rectangular shieling	25/03/2016

File name	Site No.	Name	Description	Date
457_Macfarlane_51	8	Inverbeg	rectangular shieling	25/03/2016
457_Macfarlane_52	8	Inverbeg	rectangular shieling	25/03/2016
457_Macfarlane_53		View of Inverbeg & Loch Lomond		25/03/2016
457_Macfarlane_54	9	Inverbeg	stone platform	25/03/2016
457_Macfarlane_55	9	Inverbeg	stone platform	25/03/2016
457_Macfarlane_56	10	Inverbeg	concrete platform	25/03/2016
457_Macfarlane_57	10	Inverbeg	concrete platform	25/03/2016
457_Macfarlane_58	11	Inverbeg	Longhouse	25/03/2016
457_Macfarlane_59	11	Inverbeg	Longhouse	25/03/2016
457_Macfarlane_60	12	Inverbeg	revetted bank	25/03/2016
457_Macfarlane_61	12	Inverbeg	revetted bank	25/03/2016
457_Macfarlane_62	13	Inverbeg	square structure (mill?)	25/03/2016
457_Macfarlane_63	13	Inverbeg	square structure (mill?)	25/03/2016
457_Macfarlane_64	13	Inverbeg	square structure (mill?)	25/03/2016
457_Macfarlane_65		Glen Douglas	?	25/03/2016
457_Macfarlane_66	14	Glen Douglas	kiln	25/03/2016
457_Macfarlane_67	14	Glen Douglas	kiln bowl	25/03/2016
457_Macfarlane_68	14	Glen Douglas	kiln	25/03/2016
457_Macfarlane_69	15	Glen Douglas	rectangular structure	25/03/2016
457_Macfarlane_70	15	Glen Douglas	rectangular structure	25/03/2016
457_Macfarlane_71		Glen Douglas	rectangular structure & kiln	25/03/2016
457_Macfarlane_72		Glen Douglas	rectangular structure & kiln	25/03/2016
457_Macfarlane_73		Glen Douglas	rectangular structure & kiln	25/03/2016
457_Macfarlane_74	14 & 15	Glen Douglas	rectangular structure & kiln	25/03/2016
457_Macfarlane_75		Glen Douglas	panorama	25/03/2016
457_Macfarlane_76		Glen Douglas	panorama	25/03/2016
457_Macfarlane_77		Glen Douglas	panorama	25/03/2016
457_Macfarlane_78		Glen Douglas	panorama	25/03/2016
457_Macfarlane_79		Glen Douglas	panorama	25/03/2016
457_Macfarlane_80		Glen Douglas	end of plantation	25/03/2016
457_Macfarlane_81	16	Glen Douglas	rectangular structure	25/03/2016
457_Macfarlane_82	16	Glen Douglas	rectangular structure	25/03/2016
457_Macfarlane_83	16	Glen Douglas	rectangular structure	25/03/2016
457_Macfarlane_84		Jennifer recording		25/03/2016
457_Macfarlane_85		Jennifer recording		25/03/2016
457_Macfarlane_86	17	Glen Douglas	stone building platform	25/03/2016
457_Macfarlane_87	17	Glen Douglas	stone building platform	25/03/2016
457_Macfarlane_88		Jennifer and scarf		25/03/2016
457_Macfarlane_89		Jennifer and scarf		25/03/2016
457_Macfarlane_90		Inverbeg ?motte		25/03/2016
457_Macfarlane_91		Inverbeg ?motte		25/03/2016
457_Macfarlane_92		Inverbeg ?motte		25/03/2016
457_Macfarlane_93		Inverbeg old bridge built 1762, widened 19??		25/03/2016
457_Macfarlane_94		Inverbeg old bridge		25/03/2016
457_Macfarlane_95	18	Glen Douglas	Settlement, four structures & two enclosures	03/04/2016
457_Macfarlane_96	18	Glen Douglas	structures A& B	03/04/2016
457_Macfarlane_97	18	Glen Douglas	enclosure C	03/04/2016

File name	Site No.	Name	Description	Date
457_Macfarlane_98	18	Glen Douglas	Structure A	03/04/2016
457_Macfarlane_99	18	Glen Douglas	Structure A	03/04/2016
457_Macfarlane_100	18	Glen Douglas	Structure B	03/04/2016
457_Macfarlane_101	18	Glen Douglas	Structure B	03/04/2016
457_Macfarlane_102	18	Glen Douglas	E side of stream	03/04/2016
457_Macfarlane_103	18	Glen Douglas	team recording	03/04/2016
457_Macfarlane_104	18	Glen Douglas	team recording	03/04/2016
457_Macfarlane_105	18	Glen Douglas	team recording	03/04/2016
457_Macfarlane_106	18	Glen Douglas	Enclosure C	03/04/2016
457_Macfarlane_107	18	Glen Douglas	W side of stream	03/04/2016
457_Macfarlane_108	18	Glen Douglas	W side of stream	03/04/2016
457_Macfarlane_109	18	Glen Douglas	Enclosure D	03/04/2016
457_Macfarlane_110	18	Glen Douglas	Enclosure D	03/04/2016
457_Macfarlane_111	18	Glen Douglas	Stones attached to Enclosure D	03/04/2016
457_Macfarlane_112	18	Glen Douglas	Stones attached to Enclosure D	03/04/2016
457_Macfarlane_113	18	Glen Douglas	Structure E with tree	03/04/2016
457_Macfarlane_114	18	Glen Douglas	Structure E with tree	03/04/2016
457_Macfarlane_115	18	Glen Douglas	Structure E possible doorway	03/04/2016
457_Macfarlane_116	18	Glen Douglas	Structures A, B & C	03/04/2016
457_Macfarlane_117	18	Glen Douglas	Structure E, S wall 1m high	03/04/2016
457_Macfarlane_118	18	Glen Douglas	Structure E, S wall 1m high	03/04/2016
457_Macfarlane_119	18	Glen Douglas	Structure F	03/04/2016
457_Macfarlane_120	18	Glen Douglas	Structure F, square corner	03/04/2016
457_Macfarlane_121	18	Glen Douglas	Wendy	03/04/2016
457_Macfarlane_122	18	Glen Douglas	Wendy	03/04/2016
457_Macfarlane_123	18	Glen Douglas	Wendy	03/04/2016
457_Macfarlane_124		Glen Douglas	Lunchtime	03/04/2016
457_Macfarlane_125		Glen Douglas	Boundary bank 32090 98008	03/04/2016
457_Macfarlane_126		Glen Douglas	Boundary bank 32090 98008	03/04/2016
457_Macfarlane_127	19	Glen Douglas	clearance cairn	03/04/2016
457_Macfarlane_128	19	Glen Douglas	clearance cairn	03/04/2016
457_Macfarlane_129	19	Glen Douglas	clearance cairn	03/04/2016
457_Macfarlane_130	20	Glen Douglas	shieling	03/04/2016
457_Macfarlane_131	20	Glen Douglas	shieling	03/04/2016
457_Macfarlane_132	20	Glen Douglas	shieling	03/04/2016
457_Macfarlane_133	21	Glen Douglas	shieling	03/04/2016
457_Macfarlane_134	21	Glen Douglas	shieling	03/04/2016
457_Macfarlane_135	21	Glen Douglas	shieling	03/04/2016
457_Macfarlane_136	22	Glen Douglas	small rectangular structure	03/04/2016
457_Macfarlane_137	22	Glen Douglas	small rectangular structure	03/04/2016
457_Macfarlane_138	23	Glen Douglas	longhouse	03/04/2016
457_Macfarlane_139	24	Glen Douglas	Knocking stone	03/04/2016
457_Macfarlane_140	24	Glen Douglas	Knocking stone	03/04/2016
457_Macfarlane_141	24	Glen Douglas	Knocking stone & Valerie	03/04/2016
457_Macfarlane_142	24	Glen Douglas	Knocking stone & Heather	03/04/2016

File name	Site No.	Name	Description	Date
457_Macfarlane_143	24	Glen Douglas	Knocking stone	03/04/2016
457_Macfarlane_144	25	Glen Douglas	Kiln	03/04/2016
457_Macfarlane_145	25	Glen Douglas	Kiln	03/04/2016
457_Macfarlane_146	25	Glen Douglas	Kiln	03/04/2016
457_Macfarlane_147	26	Glen Douglas	kale yard	03/04/2016
457_Macfarlane_148	26	Glen Douglas	kale yard	03/04/2016
457_Macfarlane_149	26	Glen Douglas	kale yard	03/04/2016
457_Macfarlane_150	26	Glen Douglas	kale yard	03/04/2016
457_Macfarlane_151	26	Glen Douglas	kale yard	03/04/2016
457_Macfarlane_152	26	Glen Douglas	kale yard	03/04/2016
457_Macfarlane_153	26	Glen Douglas	kale yard	03/04/2016
457_Macfarlane_154	26	Glen Douglas	kale yard	03/04/2016
457_Macfarlane_155	26	Glen Douglas	kale yard	03/04/2016
457_Macfarlane_156	26	Glen Douglas	kale yard	03/04/2016
457_Macfarlane_157	26	Glen Douglas	Katherine Price recording	03/04/2016
457_Macfarlane_158	26	Glen Douglas	Katherine Price recording	03/04/2016
457_Macfarlane_159	26	Glen Douglas	kale yard	03/04/2016
457_Macfarlane_160	26	Glen Douglas	kale yard	03/04/2016
457_Macfarlane_161	26	Glen Douglas	kale yard	03/04/2016
457_Macfarlane_162	26	Glen Douglas	kale yard	03/04/2016
457_Macfarlane_163	24	Glen Douglas	group by knocking stone	03/04/2016
457_Macfarlane_164	24	Glen Douglas	group by knocking stone	03/04/2016
457_Macfarlane_165	24	Glen Douglas	group by knocking stone	03/04/2016
457_Macfarlane_166	27	Glen Douglas	oval shaped structure	03/04/2016
457_Macfarlane_167	27	Glen Douglas	oval shaped structure	03/04/2016
457_Macfarlane_168	27	Glen Douglas	oval shaped structure	03/04/2016
457_Macfarlane_169	27	Glen Douglas	oval shaped structure being surveyed	03/04/2016
457_Macfarlane_170		Glen Douglas	Valerie & Christine heading home	03/04/2016
457_Macfarlane_171		Glen Douglas	Valerie & Christine heading home	03/04/2016
457_Macfarlane_172		Glen Douglas	Valerie & Christine heading home	03/04/2016
457_Macfarlane_173		Glen Douglas	Valerie & Christine heading home	03/04/2016
457_Macfarlane_174		Inveruglas	An Ceann Mor viewpoint	04/04/2016
457_Macfarlane_175		Inveruglas	An Ceann Mor viewpoint	04/04/2016
457_Macfarlane_176		Inveruglas	An Ceann Mor viewpoint	04/04/2016
457_Macfarlane_177		Inveruglas	An Ceann Mor viewpoint	04/04/2016
457_Macfarlane_178		Inveruglas	An Ceann Mor viewpoint	04/04/2016
457_Macfarlane_179		Inveruglas	View from An Cean Mor	04/04/2016
457_Macfarlane_180		Inveruglas	Inveruglas castle island	04/04/2016
457_Macfarlane_181		Inveruglas	View from An Cean Mor	04/04/2016
457_Macfarlane_182		Inveruglas	National Park display board	04/04/2016
457_Macfarlane_183		Inveruglas	Hydroelectric power station	04/04/2016
457_Macfarlane_184		Creag a'Phuirt	possible landing spot	04/04/2016
457_Macfarlane_185		Creag a'Phuirt	felled trees	04/04/2016
457_Macfarlane_186	28	Creag a'Phuirt	Almshouse/fishermans bothy	04/04/2016
457_Macfarlane_187	28	Creag a'Phuirt	Almshouse/fishermans bothy	04/04/2016
457_Macfarlane_188	28	Creag a'Phuirt	Almshouse/fishermans bothy, wall detail	04/04/2016

File name	Site No.	Name	Description	Date
457_Macfarlane_189	28	Creag a'Phuirt	Almshouse/fishermans bothy	04/04/2016
457_Macfarlane_190	28	Creag a'Phuirt	wall on Loch edge	04/04/2016
457_Macfarlane_191	28	Creag a'Phuirt	wall on Loch edge	04/04/2016
457_Macfarlane_192	28	Creag a'Phuirt	View back to raod	04/04/2016
457_Macfarlane_193	29	Creag a'Phuirt	D-shaped enclosure	04/04/2016
457_Macfarlane_194		Creag a'Phuirt	waters edge, possible landing spot	04/04/2016
457_Macfarlane_195	30	Creag a'Phuirt	Road revetment	04/04/2016
457_Macfarlane_196	31	Creag a'Phuirt	Old track terrace	04/04/2016
457_Macfarlane_197	31	Creag a'Phuirt	Old track terrace	04/04/2016
457_Macfarlane_198	31	Creag a'Phuirt	Old track terrace	04/04/2016
457_Macfarlane_199		Inverarnon	Stuffed bear	04/04/2016
457_Macfarlane_200		Blarstainge	kiln	04/04/2016
457_Macfarlane_201		Blarstainge	kiln	04/04/2016
457_Macfarlane_202		Blarstainge	kiln	04/04/2016
457_Macfarlane_203		Blarstainge	kiln	04/04/2016
457_Macfarlane_204		Blarstainge	kiln	04/04/2016
457_Macfarlane_205		Blarstainge	kiln	04/04/2016
457_Macfarlane_206		Blarstainge	kiln	04/04/2016
457_Macfarlane_207		Blarstainge	kiln	04/04/2016
457_Macfarlane_208		West Highland Way	Katherine & Ian	04/04/2016
457_Macfarlane_209		West Highland Way	Katherine & Ian	04/04/2016
457_Macfarlane_210		Glen Douglas	rainbow	07/04/2016
457_Macfarlane_211		Glen Douglas	rainbow	07/04/2016
457_Macfarlane_212		Glen Douglas and Loch Long		07/04/2016
457_Macfarlane_213	33	Glen Douglas		07/04/2016
457_Macfarlane_214	33	Glen Douglas		07/04/2016
457_Macfarlane_215	33	Glen Douglas		07/04/2016
457_Macfarlane_216	33	Glen Douglas		07/04/2016
457_Macfarlane_217	33	Glen Douglas		07/04/2016
457_Macfarlane_218		Glen Douglas	Christine, Helen, Libby & Heather	07/04/2016
457_Macfarlane_219	33	Glen Douglas	ditch feature in river edge	07/04/2016
457_Macfarlane_220	33	Glen Douglas	ditch feature in river edge	07/04/2016
457_Macfarlane_221		Glen Douglas	Christine	07/04/2016
457_Macfarlane_222		Glen Douglas	Ian	07/04/2016
457_Macfarlane_223		Glen Douglas	tea break	07/04/2016
457_Macfarlane_224		Glen Douglas	view up the valley	07/04/2016
457_Macfarlane_225	34	Glen Douglas	site with old field in foreground	07/04/2016
457_Macfarlane_226	34	Glen Douglas	Libby recording	07/04/2016
457_Macfarlane_227	34	Glen Douglas	Libby recording	07/04/2016
457_Macfarlane_228		Glen Douglas	view up the valley from 34	07/04/2016
457_Macfarlane_229		Glen Douglas	Helen	07/04/2016
457_Macfarlane_230	34	Glen Douglas	small structure by road	07/04/2016
457_Macfarlane_231	34	Glen Douglas	small structure by road	07/04/2016
457_Macfarlane_232	35	Glen Douglas	clearance cairn	07/04/2016
457_Macfarlane_233	35	Glen Douglas	clearance cairn	07/04/2016
457_Macfarlane_234	35	Glen Douglas	clearance cairn	07/04/2016
457_Macfarlane_235	37	Glen Douglas	small shieling	07/04/2016
457_Macfarlane_236	37	Glen Douglas	small shieling	07/04/2016

File name	Site No.	Name	Description	Date
457_Macfarlane_237	38	Glen Douglas	iron wheeled axle	07/04/2016
457_Macfarlane_238	38	Glen Douglas	iron wheeled axle	07/04/2016
457_Macfarlane_240	39	Glen Douglas	oval shieling	07/04/2016
457_Macfarlane_241	39	Glen Douglas	oval shieling	07/04/2016
457_Macfarlane_242	39	Glen Douglas	oval shieling	07/04/2016
457_Macfarlane_243	40	Glen Douglas	small structure	07/04/2016
457_Macfarlane_244		Glen Douglas	Blind summit	07/04/2016
457_Macfarlane_245		Glen Douglas	local sheep	07/04/2016
457_Macfarlane_246		Glen Douglas	local sheep	07/04/2016
457_Macfarlane_247		Glen Douglas	Invergroin farmstead	07/04/2016
457_Macfarlane_248		Glen Douglas	mound with erratics (Invergroin)	07/04/2016
457_Macfarlane_249		Glen Douglas	mound with erratics (Invergroin)	07/04/2016
457_Macfarlane_250		Glen Douglas	mound with erratics (Invergroin)	07/04/2016
457_Macfarlane_251		Glen Douglas	view up valley	07/04/2016
457_Macfarlane_252		Glen Douglas	view up valley	07/04/2016
457_Macfarlane_253		Glen Douglas	Invergroin farmstead	07/04/2016
457_Macfarlane_254		Glen Douglas	Invergroin possible structure in garden	07/04/2016
457_Macfarlane_255		Glen Douglas	Invergroin possible structure in garden	07/04/2016
457_Macfarlane_256		Glen Douglas	grass snake	07/04/2016
457_Macfarlane_257		Glen Douglas	Invergroin farmstead	07/04/2016
457_Macfarlane_258		Glen Douglas	Mr and Mrs Robertson at Invergroin	07/04/2016
457_Macfarlane_259		Glen Douglas	Mrs Robertson at Invergroin	07/04/2016
457_Macfarlane_260		Glen Douglas	Old photo of Tullich school	07/04/2016
457_Macfarlane_261		Glen Douglas	Invergroin old road & bridge	07/04/2016
457_Macfarlane_262		Glen Douglas	Invergroin old road & bridge	07/04/2016
457_Macfarlane_263		Glen Douglas	Invergroin old bridge & team	07/04/2016
457_Macfarlane_264		Glen Douglas	Invergroin old bridge, back collapsed	07/04/2016
457_Macfarlane_265		Glen Douglas	Coille Chorain	07/04/2016
457_Macfarlane_266		Glen Douglas	Coille Chorain	07/04/2016
457_Macfarlane_267		Glen Douglas	Coille Chorain	07/04/2016
457_Macfarlane_268		Glen Douglas	Path to Tullich Hill	07/04/2016
457_Macfarlane_269			Libby	07/04/2016
457_Macfarlane_270		Loch Long	view of top of loch	08/04/2016
457_Macfarlane_271		Loch Long	view across loch	08/04/2016
457_Macfarlane_272		Glen Douglas	Tullich Hill	08/04/2016
457_Macfarlane_273			spring flowers	08/04/2016
457_Macfarlane_274	44	Camus nan Clais	channel	08/04/2016
457_Macfarlane_275	44	Camus nan Clais	channel	08/04/2016
457_Macfarlane_276	45	Camus nan Clais	shieling	08/04/2016
457_Macfarlane_277	45	Camus nan Clais	shieling	08/04/2016
457_Macfarlane_278	44	Camus nan Clais	ruined structure	08/04/2016
457_Macfarlane_279	44	Camus nan Clais	ruined structure	08/04/2016
457_Macfarlane_280	44	Camus nan Clais	ruined structure	08/04/2016
457_Macfarlane_281	44	Camus nan Clais	ruined structure	08/04/2016

File name	Site No.	Name	Description	Date
457_Macfarlane_282			Rhona Macfarlane	08/04/2016
457_Macfarlane_283		Glen Douglas	the team	14/04/2016
457_Macfarlane_284		Glen Douglas	Irene, Libby & Margaret	14/04/2016
457_Macfarlane_285		Glen Douglas	Margaret	14/04/2016
457_Macfarlane_286		Glen Douglas	Christine & Ian	14/04/2016
457_Macfarlane_287		Glen Douglas	the team	14/04/2016
457_Macfarlane_288		Glen Douglas	tadpoles	14/04/2016
457_Macfarlane_289		Glen Douglas	tadpoles	14/04/2016
457_Macfarlane_290		Glen Douglas	tadpoles	14/04/2016
457_Macfarlane_291		Glen Douglas	Taped offset surveying	14/04/2016
457_Macfarlane_292		Glen Douglas	Taped offset surveying	14/04/2016
457_Macfarlane_293		Glen Douglas	Taped offset surveying	14/04/2016
457_Macfarlane_294		Glen Douglas	Ian surveying	14/04/2016
457_Macfarlane_295		Glen Douglas	Ian surveying	14/04/2016
457_Macfarlane_296		Glen Douglas	Ian surveying	14/04/2016
457_Macfarlane_297		Glen Douglas	the team surveying	14/04/2016
457_Macfarlane_298	18	Glen Douglas	East side of the stream	14/04/2016
457_Macfarlane_299	18	Glen Douglas	surveying the east side	14/04/2016
457_Macfarlane_300	18	Glen Douglas	surveying the east side	14/04/2016
457_Macfarlane_301	18	Glen Douglas	surveying the east side	14/04/2016
457_Macfarlane_302	18	Glen Douglas	surveying the east side	14/04/2016
457_Macfarlane_303	18	Glen Douglas	surveying the west side	14/04/2016
457_Macfarlane_304	18	Glen Douglas	surveying the west side	14/04/2016
457_Macfarlane_305	18	Glen Douglas	surveying the west side	14/04/2016
457_Macfarlane_306	18	Glen Douglas	surveying the west side	14/04/2016
457_Macfarlane_307	18	Glen Douglas	surveying the west side	14/04/2016
457_Macfarlane_308	18	Glen Douglas	surveying the west side	14/04/2016
457_Macfarlane_309	18	Glen Douglas	drawing west side	15/04/2016
457_Macfarlane_310	18	Glen Douglas	drawing east side	15/04/2016
457_Macfarlane_311	18	Glen Douglas	Surveying east side	15/04/2016
457_Macfarlane_312	18	Glen Douglas	across the stream	15/04/2016
457_Macfarlane_313	18	Glen Douglas	across the stream	15/04/2016
457_Macfarlane_314	18	Glen Douglas	Surveying east side	15/04/2016
457_Macfarlane_315	18	Glen Douglas	Ian and his drawing	15/04/2016
457_Macfarlane_316	18	Glen Douglas	Ian and his drawing	15/04/2016
457_Macfarlane_317	18	Glen Douglas	his drawing	15/04/2016
457_Macfarlane_318	18	Glen Douglas	Margaret & Jennifer	15/04/2016
457_Macfarlane_319	18	Glen Douglas	Irene	15/04/2016
457_Macfarlane_320	18	Glen Douglas	Irene	15/04/2016
457_Macfarlane_321	18	Glen Douglas	SE corner of Structure F	15/04/2016
457_Macfarlane_322	18	Glen Douglas	base line	15/04/2016
457_Macfarlane_323	18	Glen Douglas	base line	15/04/2016
457_Macfarlane_324	18	Glen Douglas	base line	15/04/2016
457_Macfarlane_325	23	Glen Douglas	Margaret surveying	15/04/2016
457_Macfarlane_326	23	Glen Douglas	Margaret surveying	15/04/2016
457_Macfarlane_327	25	Glen Douglas	View up the glen	15/04/2016
457_Macfarlane_328	25	Glen Douglas	View of kiln	15/04/2016
457_Macfarlane_329		Glen Douglas	Ian drawing	15/04/2016
457_Macfarlane_330		Glen Douglas	Ian drawing	15/04/2016
457_Macfarlane_331	25	Glen Douglas	Ian drawing	15/04/2016
457_Macfarlane_332	27	Glen Douglas	Irene & Margaret surveying	15/04/2016
457_Macfarlane_333		Glen Douglas	Margaret	15/04/2016
457_Macfarlane_334		Glen Douglas	Irene & Margaret surveying	15/04/2016
457_Macfarlane_335		Glen Douglas	Libby	15/04/2016

File name	Site No.	Name	Description	Date
457_Macfarlane_336	18	Glen Douglas	Libbys drawing	15/04/2016
457_Macfarlane_337		Inveruglas	View from An Cean Mor	16/04/2016
457_Macfarlane_338		Inveruglas	An Cean Mor	16/04/2016
457_Macfarlane_339		Inveruglas	View from An Cean Mor	16/04/2016
457_Macfarlane_340		Inveruglas	View from An Cean Mor	16/04/2016
457_Macfarlane_341		Inveruglas	The team	16/04/2016
457_Macfarlane_342		Ardvorlich	bridge over railway	16/04/2016
457_Macfarlane_343	47	Ardvorlich	revetted track	16/04/2016
457_Macfarlane_344	47	Ardvorlich	revetted track	16/04/2016
457_Macfarlane_345	48	Ardvorlich	rectangular structure	16/04/2016
457_Macfarlane_346	48	Ardvorlich	rectangular structure (detail)	16/04/2016
457_Macfarlane_347	48	Ardvorlich	View from Site 48 to Loch Lomond	16/04/2016
457_Macfarlane_348	49	Ardvorlich	rectangular structure	16/04/2016
457_Macfarlane_349	50	Ardvorlich	concrete platform (2WW)	16/04/2016
457_Macfarlane_350	50	Ardvorlich	rectangular mound (2WW)	16/04/2016
457_Macfarlane_351	51	Ardvorlich	rectangular structure in garden	16/04/2016
457_Macfarlane_352	52	Ardvorlich	Bridge remains	16/04/2016
457_Macfarlane_353	52	Ardvorlich	Bridge remains	16/04/2016
457_Macfarlane_354	52	Ardvorlich	Bridge remains	16/04/2016
457_Macfarlane_355		Ardvorlich	Gully & modern railway bridge	16/04/2016
457_Macfarlane_356		Ardvorlich	Military Way at Ardvorlich	16/04/2016
457_Macfarlane_357		Ardvorlich	fungus	16/04/2016
457_Macfarlane_358		Ardvorlich	Military Way N of Ardvorlich heading for the Loch	16/04/2016
457_Macfarlane_359		Ardvorlich	The team heading for the loch	16/04/2016
457_Macfarlane_360		Ardvorlich	The team heading for the loch	16/04/2016
457_Macfarlane_361	53	Stuckama/Benglash	Ford	08/05/2016
457_Macfarlane_362		Stuckama/Benglash	Route of old track by river	08/05/2016
457_Macfarlane_363		Stuckama/Benglash	Route of old track by river	08/05/2016
457_Macfarlane_364		Stuckama/Benglash	Roys map of area showing old track	08/05/2016
457_Macfarlane_365		Stuckama/Benglash	The team	08/05/2016
457_Macfarlane_366		Stuckama/Benglash	Route of old track by river	08/05/2016
457_Macfarlane_367		Stuckama/Benglash	Route of old track by river	08/05/2016
457_Macfarlane_368		Stuckama/Benglash	frog	08/05/2016
457_Macfarlane_369		Stuckama/Benglash	frog	08/05/2016
457_Macfarlane_370	54	Stuckama	rectangular structure	08/05/2016
457_Macfarlane_371	54	Stuckama	window detail	08/05/2016
457_Macfarlane_372	54	Stuckama	debris	08/05/2016
457_Macfarlane_373	54	Stuckama	fireplace in situ	08/05/2016
457_Macfarlane_374	54	Stuckama	detail of fireplace	08/05/2016
457_Macfarlane_375	54	Stuckama	fireplace in situ	08/05/2016

File name	Site No.	Name	Description	Date
457_Macfarlane_376	54	Stuckama	fireplace in situ	08/05/2016
457_Macfarlane_377	54	Stuckama	high gable end	08/05/2016
457_Macfarlane_378	54	Stuckama	double tree trunk	08/05/2016
457_Macfarlane_379	54	Stuckama	humps and bumps in the vicinity	08/05/2016
457_Macfarlane_380	54	Stuckama	humps and bumps in the vicinity	08/05/2016
457_Macfarlane_381		Stuckama	goats	08/05/2016
457_Macfarlane_382		Stuckama	goats	08/05/2016
457_Macfarlane_383		Blarstainge	view from West Highland Way	08/05/2016
457_Macfarlane_384		Blarstainge	View up valley	08/05/2016
457_Macfarlane_385			View to snow capped peaks	08/05/2016
457_Macfarlane_386		Blarstainge	view from West Highland Way	08/05/2016
457_Macfarlane_387		Blarstainge	view from West Highland Way	08/05/2016
457_Macfarlane_388	55	Blarstainge	surveying structure	08/05/2016
457_Macfarlane_389	55	Blarstainge	surveying structure	08/05/2016
457_Macfarlane_390	55	Blarstainge	surveying structure - Wendy	08/05/2016
457_Macfarlane_391	55	Blarstainge	surveying structure - Katherine	08/05/2016
457_Macfarlane_392	55	Blarstainge	surveying structure -Sue	08/05/2016
457_Macfarlane_393		Ardleish	view towards loch	08/05/2016
457_Macfarlane_394		Loch Lomond	view from West Highland Way	08/05/2016
457_Macfarlane_395	86	Ardlui & Eilean Henrig	view from West Highland Way	08/05/2016
457_Macfarlane_396	86	Ardlui & Eilean Henrig	view from West Highland Way	08/05/2016
457_Macfarlane_397	86	Ardlui & Eilean Henrig	view from West Highland Way	08/05/2016
457_Macfarlane_398	86	Eilean Henrig	detail	08/05/2016
457_Macfarlane_399	86	Eilean Henrig	detail of trees in water	08/05/2016
457_Macfarlane_400	86	Eilean Henrig & Promontory		08/05/2016
457_Macfarlane_401		Ardleish deserted farm	view from West Highland Way	08/05/2016
457_Macfarlane_402		Ardleish deserted farm	detail	08/05/2016
457_Macfarlane_403	56	Ardleish	knocking stone	08/05/2016
457_Macfarlane_404		Ardleish deserted farm	unroofed structures	08/05/2016
457_Macfarlane_405		Ardleish deserted farm	unroofed structures	08/05/2016
457_Macfarlane_406		Ardleish deserted farm	collugated iron cottage	08/05/2016
457_Macfarlane_407		Ardleish deserted farm	partly roofed structure	08/05/2016
457_Macfarlane_408		Ardleish deserted farm	old ironwork	08/05/2016
457_Macfarlane_409		Ardleish deserted farm	old ironwork	08/05/2016

File name	Site No.	Name	Description	Date
457_Macfarlane_410		Ardleish deserted farm	old ironwork	08/05/2016
457_Macfarlane_411		Ardleish deserted farm	old ironwork	08/05/2016
457_Macfarlane_412		Ardleish deserted farm	unroofed structures	08/05/2016
457_Macfarlane_413		Ardleish deserted farm	unroofed structures	08/05/2016
457_Macfarlane_414		Ardleish deserted farm	unroofed structures	08/05/2016
457_Macfarlane_415		Ardleish deserted farm	unroofed structures	08/05/2016
457_Macfarlane_416		Ardleish deserted farm	sheep fold	08/05/2016
457_Macfarlane_417		Ardleish deserted farm	barn interior	08/05/2016
457_Macfarlane_418			team sharing a coffee	08/05/2016
457_Macfarlane_419	57	Ardleish	rectangular structure	08/05/2016
457_Macfarlane_420	57	Ardleish	rectangular structure	08/05/2016
457_Macfarlane_421	57	Ardleish	rectangular structure	08/05/2016
457_Macfarlane_422	57	Ardleish	rectangular structure	08/05/2016
457_Macfarlane_423	58 A & B	Ardleish	sub-rectangular structures	08/05/2016
457_Macfarlane_424	58	Ardleish	enclosure wall	08/05/2016
457_Macfarlane_425	58A	Ardleish	sub-rectangular structure	08/05/2016
457_Macfarlane_426		Ardleish	Katherine	08/05/2016
457_Macfarlane_427		Ardleish	Katherine	08/05/2016
457_Macfarlane_428		Ardleish	Katherine	08/05/2016
457_Macfarlane_429		Eilean Henrig	from Ardleish	08/05/2016
457_Macfarlane_430		Promontory	from Ardleish	08/05/2016
457_Macfarlane_431		Promontory	from Ardleish	08/05/2016
457_Macfarlane_432		Promontory	from Ardleish	08/05/2016
457_Macfarlane_433	58D	Ardleish	oval shaped structure	08/05/2016
457_Macfarlane_434	58D	Ardleish	oval shaped structure	08/05/2016
457_Macfarlane_435	59	Ardleish	sub-rectangular structures	08/05/2016
457_Macfarlane_436	59	Ardleish	sub-rectangular structures	08/05/2016
457_Macfarlane_437		Ardleish	view to the Loch	08/05/2016
457_Macfarlane_438			bracken emerging	08/05/2016
457_Macfarlane_439	60	Ardleish	sub-rectangular structure	08/05/2016
457_Macfarlane_440	60	Ardleish	sub-rectangular structure	08/05/2016
457_Macfarlane_441		Ardleish	goat	08/05/2016
457_Macfarlane_442		Ardleish	goat	08/05/2016
457_Macfarlane_443		Ardleish	goat	08/05/2016
457_Macfarlane_444	59	Ardleish	sub-rectangular structures	08/05/2016
457_Macfarlane_445	53	Stuckama/Benglash	Ford from W Highland Way	08/05/2016
457_Macfarlane_446			Wendy, Katherine & Sue	08/05/2016
457_Macfarlane_447			Katherine	08/05/2016
457_Macfarlane_448			Katherine	08/05/2016
457_Macfarlane_449			Katherine	08/05/2016

File name	Site No.	Name	Description	Date
457_Macfarlane_450	61	Blarstainge	Blaeberry House	09/05/2016
457_Macfarlane_451	61	Blarstainge	Blaeberry House	09/05/2016
457_Macfarlane_452	61	Blarstainge	Blaeberry House	09/05/2016
457_Macfarlane_453	61	Blarstainge	Blaeberry House	09/05/2016
457_Macfarlane_454	61	Blarstainge	Blaeberry House	09/05/2016
457_Macfarlane_455	61	Blarstainge	Blaeberry House	09/05/2016
457_Macfarlane_456	61	Blarstainge	Blaeberry House	09/05/2016
457_Macfarlane_457	61	Blarstainge	Blaeberry House	09/05/2016
457_Macfarlane_458	61	Blarstainge	Blaeberry House	09/05/2016
457_Macfarlane_459	61	Blarstainge	Blaeberry House	09/05/2016
457_Macfarlane_460	61	Blarstainge	Oak leaves	09/05/2016
457_Macfarlane_461	61	Blarstainge	Oak leaves	09/05/2016
457_Macfarlane_462	61	Blarstainge	Blaeberries	09/05/2016
457_Macfarlane_463			General view up the loch	09/05/2016
457_Macfarlane_464			Climbing the deer fence	09/05/2016
457_Macfarlane_465	62A	Blarstainge	rectangular structure	09/05/2016
457_Macfarlane_466	62A	Blarstainge	rectangular structure	09/05/2016
457_Macfarlane_467	62A	Blarstainge	rectangular structure	09/05/2016
457_Macfarlane_468	62A	Blarstainge	rectangular structure	09/05/2016
457_Macfarlane_469	62A	Blarstainge	rectangular structure	09/05/2016
457_Macfarlane_470		Blarstainge	enclosure by River Falloch	09/05/2016
457_Macfarlane_471		Blarstainge	enclosure by River Falloch	09/05/2016
457_Macfarlane_472		Blarstainge	bank by enclosure	09/05/2016
457_Macfarlane_473	62A	Blarstainge	rectangular structure	09/05/2016
457_Macfarlane_474	62A	Blarstainge	rectangular structure	09/05/2016
457_Macfarlane_475	62B	Blarstainge	rectangular structure	09/05/2016
457_Macfarlane_476	62B	Blarstainge	rectangular structure	09/05/2016
457_Macfarlane_477	62C	Blarstainge	rectangular structure	09/05/2016
457_Macfarlane_478	62C	Blarstainge	rectangular structure	09/05/2016
457_Macfarlane_479	62C	Blarstainge	rectangular structure	09/05/2016
457_Macfarlane_480	62C	Blarstainge	rectangular structure	09/05/2016
457_Macfarlane_481	62C	Blarstainge	rectangular structure	09/05/2016
457_Macfarlane_482	62C	Blarstainge	rectangular structure	09/05/2016
457_Macfarlane_483	62C	Blarstainge	detail of lambing pen	09/05/2016
457_Macfarlane_484	62C	Blarstainge	detail of lambing pen	09/05/2016
457_Macfarlane_485	62E	Blarstainge	oval shaped structure	09/05/2016
457_Macfarlane_486		Blarstainge	view up loch	09/05/2016
457_Macfarlane_487	62E	Blarstainge	oval shaped structure	09/05/2016
457_Macfarlane_488	63	Blarstainge	Lambing pen beside large erratic	09/05/2016
457_Macfarlane_489			Margaret	09/05/2016
457_Macfarlane_490		Tigh na Laraich	View up loch to the SW	13/05/2016
457_Macfarlane_491		Tigh na Laraich	View up the hill to Monadh Tigh na Laraich	13/05/2016
457_Macfarlane_492	67	Tigh na Laraich	rectangular structure	13/05/2016
457_Macfarlane_493	67	Tigh na Laraich	rectangular structure	13/05/2016
457_Macfarlane_494	66	Tigh na Laraich	sheep fold	13/05/2016
457_Macfarlane_495	66	Tigh na Laraich	sheep fold	13/05/2016
457_Macfarlane_496	66	Tigh na Laraich	sheep fold	13/05/2016
457_Macfarlane_497	66	Tigh na Laraich	sheep fold	13/05/2016
457_Macfarlane_498	66	Tigh na Laraich	sheep fold	13/05/2016
457_Macfarlane_499	64	Tigh na Laraich	rectangular structure	13/05/2016
457_Macfarlane_500	64	Tigh na Laraich	rectangular structure	13/05/2016
457_Macfarlane_501	64	Tigh na Laraich	rectangular structure	13/05/2016

File name	Site No.	Name	Description	Date
457_Macfarlane_502	65	Tigh na Laraich	U-shaped structure, possible still	13/05/2016
457_Macfarlane_503	66	Tigh na Laraich	sheep fold	13/05/2016
457_Macfarlane_504	66	Tigh na Laraich	sheep fold	13/05/2016
457_Macfarlane_505	66	Tigh na Laraich	sheep fold	13/05/2016
457_Macfarlane_506	66	Tigh na Laraich	sheep fold, abutting masonry	13/05/2016
457_Macfarlane_507	66	Tigh na Laraich	sheep fold, abutting masonry	13/05/2016
457_Macfarlane_508	66	Tigh na Laraich	sheep fold	13/05/2016
457_Macfarlane_509	66	Tigh na Laraich	sheep fold, blocked entrance way	13/05/2016
457_Macfarlane_510	66	Tigh na Laraich	sheep fold, blocked entrance way	13/05/2016
457_Macfarlane_511	66	Tigh na Laraich	sheep fold	13/05/2016
457_Macfarlane_512	66	Tigh na Laraich	sheep fold, corner detail	13/05/2016
457_Macfarlane_513	66	Tigh na Laraich	sheep fold, blocked entrance way	13/05/2016
457_Macfarlane_514	66	Tigh na Laraich	sheep fold, blocked entrance way	13/05/2016
457_Macfarlane_515	66	Tigh na Laraich	sheep fold	13/05/2016
457_Macfarlane_516	66	Tigh na Laraich	sheep fold	13/05/2016
457_Macfarlane_517	66	Tigh na Laraich	sheep fold	13/05/2016
457_Macfarlane_518	66	Tigh na Laraich	sheep fold, blocked entrance way	13/05/2016
457_Macfarlane_519	66	Tigh na Laraich	sheep fold, enclosure wall	13/05/2016
457_Macfarlane_520	66	Tigh na Laraich	sheep fold entrance	13/05/2016
457_Macfarlane_521	66	Tigh na Laraich	sheep fold entrance	13/05/2016
457_Macfarlane_522	66	Tigh na Laraich	sheep fold entrance	13/05/2016
457_Macfarlane_523	66	Tigh na Laraich	sheep fold, possible earlier structure	13/05/2016
457_Macfarlane_524	66	Tigh na Laraich	sheep fold, possible earlier structure	13/05/2016
457_Macfarlane_525	66	Tigh na Laraich	sheep fold, possible earlier structure	13/05/2016
457_Macfarlane_526	66	Tigh na Laraich	sheep fold, possible earlier structure	13/05/2016
457_Macfarlane_527	66	Tigh na Laraich	sheep fold entrance	13/05/2016
457_Macfarlane_528	66	Tigh na Laraich	sheep fold, blocked cruck slot	13/05/2016
457_Macfarlane_529	66	Tigh na Laraich	sheep fold, blocked cruck slot	13/05/2016
457_Macfarlane_530	66	Tigh na Laraich	sheep fold, blocked cruck slot	13/05/2016
457_Macfarlane_531	66	Tigh na Laraich	sheep fold, blocked cruck slot	13/05/2016
457_Macfarlane_532	66	Tigh na Laraich	sheep fold, opposite blocked cruck slot	13/05/2016
457_Macfarlane_533	66	Tigh na Laraich	sheep fold, opposite blocked cruck slot	13/05/2016
457_Macfarlane_534	66	Tigh na Laraich	protruding stone for attaching thatch	13/05/2016
457_Macfarlane_535	66	Tigh na Laraich	protruding stone for attaching thatch	13/05/2016
457_Macfarlane_536	66	Tigh na Laraich	sheep fold, sheep creep	13/05/2016

File name	Site No.	Name	Description	Date
457_Macfarlane_537	66	Tigh na Laraich	sheep fold, sheep creep	13/05/2016
457_Macfarlane_538	66	Tigh na Laraich	sheep fold, interior	13/05/2016
457_Macfarlane_539	66	Tigh na Laraich	sheep fold, interior	13/05/2016
457_Macfarlane_540	66	Tigh na Laraich	sheep fold, interior	13/05/2016
457_Macfarlane_541	66	Tigh na Laraich	sheep fold, interior	13/05/2016
457_Macfarlane_542	66	Tigh na Laraich	sheep fold, interior	13/05/2016
457_Macfarlane_543	66	Tigh na Laraich	sheep fold, interior	13/05/2016
457_Macfarlane_544	67	Tigh na Laraich	rectangular structure with aumbry	13/05/2016
457_Macfarlane_545	67	Tigh na Laraich	rectangular structure with aumbry	13/05/2016
457_Macfarlane_546	67	Tigh na Laraich	rectangular structure with aumbry setting	13/05/2016
457_Macfarlane_547	67	Tigh na Laraich	rectangular structure with aumbry setting	13/05/2016
457_Macfarlane_548	67	Tigh na Laraich	Libby recording	13/05/2016
457_Macfarlane_549	67	Tigh na Laraich	Libby's drawing	13/05/2016
457_Macfarlane_550	66	Tigh na Laraich	Fiona's drawing	13/05/2016
457_Macfarlane_551		Broom /Gorse		13/05/2016
457_Macfarlane_552		Broom /Gorse		13/05/2016
457_Macfarlane_553		Craggan Sithe	Woodland	13/05/2016
457_Macfarlane_554	70	Craggan Sithe	rectangular structure	13/05/2016
457_Macfarlane_555	70	Craggan Sithe	rectangular structure	13/05/2016
457_Macfarlane_556	70	Craggan Sithe	rectangular structure	13/05/2016
457_Macfarlane_557		Craggan Sithe	track downhill	13/05/2016
457_Macfarlane_558		Craggan Sithe	track downhill	13/05/2016
457_Macfarlane_559			Oliver	13/05/2016
457_Macfarlane_560			Oliver	13/05/2016
457_Macfarlane_561			Oliver	13/05/2016
457_Macfarlane_562			Heather	14/05/2016
457_Macfarlane_563			Heather	14/05/2016
457_Macfarlane_564			Oliver, Susan, Janie, Katherine & Heather	14/05/2016
457_Macfarlane_565		Craggan Sithe	Steeply sloping valley side	14/05/2016
457_Macfarlane_566		Craggan Sithe	old drystone dyke beside stream	14/05/2016
457_Macfarlane_567		Craggan Sithe	old drystone dyke beside stream	14/05/2016
457_Macfarlane_568	69	Craggan Sithe	turf bank	14/05/2016
457_Macfarlane_569	69	Craggan Sithe	turf bank	14/05/2016
457_Macfarlane_570	70	Craggan Sithe	rectangular structure	14/05/2016
457_Macfarlane_571	70	Craggan Sithe	rectangular structure	14/05/2016
457_Macfarlane_572	70	Craggan Sithe	rectangular structure	14/05/2016
457_Macfarlane_573	70	Craggan Sithe	rectangular structure	14/05/2016
457_Macfarlane_574	70	Craggan Sithe	Oliver measuring	14/05/2016
457_Macfarlane_575	70	Craggan Sithe	Oliver & Katherine	14/05/2016
457_Macfarlane_576	70	Craggan Sithe	Oliver measuring	14/05/2016
457_Macfarlane_577	70	Craggan Sithe	Oliver measuring	14/05/2016
457_Macfarlane_578	70	Craggan Sithe	rough stonework	14/05/2016
457_Macfarlane_579	68 & 70	Craggan Sithe	rectangular structures	14/05/2016
457_Macfarlane_580	68 & 70	Craggan Sithe	rectangular structures	14/05/2016
457_Macfarlane_581	68 & 70	Craggan Sithe	rectangular structures	14/05/2016
457_Macfarlane_582	68 & 70	Craggan Sithe	team surveying	14/05/2016
457_Macfarlane_583	68	Craggan Sithe	rectangular structure	14/05/2016
457_Macfarlane_584	68	Craggan Sithe	rectangular structure	14/05/2016

File name	Site No.	Name	Description	Date
457_Macfarlane_585	68	Craggan Sithe	rectangular structure	14/05/2016
457_Macfarlane_586		Craggan Sithe	rucksack	14/05/2016
457_Macfarlane_587	71	Craggan Sithe	hollow, possible tree throw	14/05/2016
457_Macfarlane_588		Craggan Sithe	bluebells	14/05/2016
457_Macfarlane_589		Craggan Sithe	large boulder within the enclosure	14/05/2016
457_Macfarlane_590		Craggan Sithe	patch of long grass	14/05/2016
457_Macfarlane_591		Craggan Sithe	patch of long grass	14/05/2016
457_Macfarlane_592		Craggan Sithe	Oliver and Katherine	14/05/2016
457_Macfarlane_593		Craggan Sithe	Susan and Janie	14/05/2016
457_Macfarlane_594		Craggan Sithe	large boulder within the enclosure	14/05/2016
457_Macfarlane_595		Craggan Sithe	view over Loch Long	14/05/2016
457_Macfarlane_596		Craggan Sithe	team break	14/05/2016
457_Macfarlane_597		Craggan Sithe	bracken emerging	14/05/2016
457_Macfarlane_598		Craggan Sithe	view over Loch Long	14/05/2016
457_Macfarlane_599	73	Craggan Sithe	platform beside the road	14/05/2016
457_Macfarlane_600		Craggan Sithe	view to loch	14/05/2016
457_Macfarlane_601		Craggan Sithe	view to loch	14/05/2016
457_Macfarlane_602		Craggan Sithe	possible pollarding	14/05/2016
457_Macfarlane_603		Glen Douglas	visiting site	14/05/2016
457_Macfarlane_604		Glen Douglas	bluebells	14/05/2016
457_Macfarlane_605			Janie	14/05/2016
457_Macfarlane_606		Craggan Sithe	Janie	14/05/2016
457_Macfarlane_607		Craggan Sithe	Heather	14/05/2016
457_Macfarlane_608		Craggan Sithe	View to loch	14/05/2016
457_Macfarlane_609		Glen Douglas	visiting site	14/05/2016
457_Macfarlane_610		Strath Dubh-Uisge	Team on footbridge over railway	19/05/2016
457_Macfarlane_611		Strath Dubh-Uisge	Team on footbridge over railway	19/05/2016
457_Macfarlane_612		Strath Dubh-Uisge	Natural mound N of waterfalls	19/05/2016
457_Macfarlane_613		Strath Dubh-Uisge	The team consults the map	19/05/2016
457_Macfarlane_614		Strath Dubh-Uisge	Waterfalls at E end of strath	19/05/2016
457_Macfarlane_615		Strath Dubh-Uisge	Finding shelter at lunchtime	19/05/2016
457_Macfarlane_616		Strath Dubh-Uisge	Finding shelter at lunchtime	19/05/2016
457_Macfarlane_617		Strath Dubh-Uisge	Looking SW up the strath	19/05/2016
457_Macfarlane_618		Strath Dubh-Uisge	High up but no view	19/05/2016
457_Macfarlane_619	74	Strath Dubh-Uisge	Looking SW towards site	19/05/2016
457_Macfarlane_620	74	Strath Dubh-Uisge	View from NE	19/05/2016
457_Macfarlane_621	74	Strath Dubh-Uisge	Irregular shaped enclosure	19/05/2016
457_Macfarlane_622	74	Strath Dubh-Uisge	Irregular shaped enclosure	19/05/2016
457_Macfarlane_623	75	Strath Dubh-Uisge	Rectangular structure seen on 1st edition OS map	19/05/2016
457_Macfarlane_624	75	Strath Dubh-Uisge	Fireplace at E end	19/05/2016
457_Macfarlane_625	75	Strath Dubh-Uisge	Fireplace at E end	19/05/2016
457_Macfarlane_626	75	Strath Dubh-Uisge	Enclosure on N side	19/05/2016

File name	Site No.	Name	Description	Date
457_Macfarlane_627	75	Strath Dubh-Uisge	Enclosure on N side	19/05/2016
457_Macfarlane_628	75	Strath Dubh-Uisge	Enclosure on N side	19/05/2016
457_Macfarlane_629	75	Strath Dubh-Uisge	Enclosure on N side	19/05/2016
457_Macfarlane_630	75	Strath Dubh-Uisge	Interior of enclosure to N	19/05/2016
457_Macfarlane_631	75	Strath Dubh-Uisge	Whole structure	19/05/2016
457_Macfarlane_632	76A	Strath Dubh-Uisge	small rectangular structure	19/05/2016
457_Macfarlane_633	76A	Strath Dubh-Uisge	small rectangular structure	19/05/2016
457_Macfarlane_634	76A	Strath Dubh-Uisge	small rectangular structure	19/05/2016
457_Macfarlane_635	76	Strath Dubh-Uisge	small rectangular structure	19/05/2016
457_Macfarlane_636		Strath Dubh-Uisge	Jennifer	19/05/2016
457_Macfarlane_637		Strath Dubh-Uisge	Ian	19/05/2016
457_Macfarlane_638		Strath Dubh-Uisge	Long walks home	19/05/2016
457_Macfarlane_639		Strath Dubh-Uisge	View of Geal Loch	19/05/2016
457_Macfarlane_640		Strath Dubh-Uisge	railway bridge near to the road	19/05/2016
457_Macfarlane_641	79	Inverhoulin	Weavers cottage	20/05/2016
457_Macfarlane_642	79	Inverhoulin	Weavers cottage	20/05/2016
457_Macfarlane_643	79	Inverhoulin	Weavers cottage	20/05/2016
457_Macfarlane_644	77	Inverhoulin	Rectangular structure	20/05/2016
457_Macfarlane_645	77	Inverhoulin	Rectangular structure	20/05/2016
457_Macfarlane_646	77	Inverhoulin	Fiona recording	20/05/2016
457_Macfarlane_647	77	Inverhoulin	Rectangular structure	20/05/2016
457_Macfarlane_648	77	Inverhoulin	Rectangular structure	20/05/2016
457_Macfarlane_649	78	Inverhoulin	Rectangular structure	20/05/2016
457_Macfarlane_650	78	Inverhoulin	Rectangular structure	20/05/2016
457_Macfarlane_651	78	Inverhoulin	Rectangular structure	20/05/2016
457_Macfarlane_652		Inverhoulin	Team recording	20/05/2016
457_Macfarlane_653	78	Inverhoulin	Rectangular structure	20/05/2016
457_Macfarlane_654		Inverhoulin	Blairannich, chatting with locals	20/05/2016
457_Macfarlane_655		Inverhoulin	Blairannich, pig sty	20/05/2016
457_Macfarlane_656	80	Inverhoulin	Blairannich, bridge foundations only	20/05/2016
457_Macfarlane_657	81	Port a Chaipuill	Mill race entrance	20/05/2016
457_Macfarlane_658	81	Port a Chaipuill	Mill race entrance	20/05/2016
457_Macfarlane_659	81	Port a Chaipuill	Mill	20/05/2016
457_Macfarlane_660	81	Port a Chaipuill	Mill	20/05/2016
457_Macfarlane_661	81	Port a Chaipuill	Mill	20/05/2016
457_Macfarlane_662	81	Port a Chaipuill	Mill	20/05/2016
457_Macfarlane_663	81	Port a Chaipuill	Mill, roof tiles from excavation	20/05/2016
457_Macfarlane_664	82	Port a Chaipuill	structure, seen on 1st edition OS map	20/05/2016
457_Macfarlane_665	82	Port a Chaipuill	structure, seen on 1st edition OS map	20/05/2016
457_Macfarlane_666	82	Port a Chaipuill	structure, seen on 1st edition OS map	20/05/2016
457_Macfarlane_667	82	Port a Chaipuill	knocking stone	20/05/2016
457_Macfarlane_668	82	Port a Chaipuill	team & knocking stone	20/05/2016
457_Macfarlane_669	82	Port a Chaipuill	knocking stone (enhanced colours)	20/05/2016
457_Macfarlane_670		Strath Dubh-Uisge	Ford (NN31NW 9.3)	20/05/2016

File name	Site No.	Name	Description	Date
457_Macfarlane_671		Strath Dubh-Uisge	Ford (NN31NW 9.3)	20/05/2016
457_Macfarlane_672		Strath Dubh-Uisge	Ford (NN31NW 9.3)	20/05/2016
457_Macfarlane_673		Strath Dubh-Uisge	Ford (NN31NW 9.3)	20/05/2016
457_Macfarlane_674		Strath Dubh-Uisge	Ford (NN31NW 9.3)	20/05/2016
457_Macfarlane_675		Strath Dubh-Uisge	Ford (NN31NW 9.3) & buildings	20/05/2016
457_Macfarlane_676		Strath Dubh-Uisge	bluebell wood E of ford	20/05/2016
457_Macfarlane_677		Strath Dubh-Uisge	bluebell wood E of ford	20/05/2016
457_Macfarlane_678		Strath Dubh-Uisge	Woodland E of ford	20/05/2016
457_Macfarlane_679	83	Garabal	Unroofed structures (on 1st edition OS map)	20/05/2016
457_Macfarlane_680	83	Garabal	Unroofed structures (on 1st edition)	20/05/2016
457_Macfarlane_681	83	Garabal	Unroofed structures (on 1st edition OS map)	20/05/2016
457_Macfarlane_682	83	Garabal	Unroofed structures (on 1st edition OS map)	20/05/2016
457_Macfarlane_683	83	Garabal	Unroofed structures. Blocked doorway	20/05/2016
457_Macfarlane_684	83	Garabal	Katherine	20/05/2016
457_Macfarlane_685	83	Garabal	Red sandstone fireplace	20/05/2016
457_Macfarlane_686	83	Garabal	Red sandstone fireplace	20/05/2016
457_Macfarlane_687	83	Garabal	Red sandstone fireplace	20/05/2016
457_Macfarlane_688	83	Garabal	Red sandstone fireplace	20/05/2016
457_Macfarlane_689	83	Garabal	Iron work in fireplace	20/05/2016
457_Macfarlane_690	83	Garabal	Red sandstone fireplace	20/05/2016
457_Macfarlane_691	83	Garabal	Red sandstone fireplace	20/05/2016
457_Macfarlane_692	83	Garabal	Unroofed rectangular structures	20/05/2016
457_Macfarlane_693	84	Garabal	Unroofed structures - more modern site	20/05/2016
457_Macfarlane_694	84	Garabal	Unroofed structures	20/05/2016
457_Macfarlane_695	84	Garabal	Unroofed structures	20/05/2016
457_Macfarlane_696	84	Garabal	Unroofed structures	20/05/2016
457_Macfarlane_697	84	Garabal	Unroofed structures	20/05/2016
457_Macfarlane_698	84	Garabal	bricks exposed	20/05/2016
457_Macfarlane_699	84	Garabal	Unroofed structures	20/05/2016
457_Macfarlane_700	84	Garabal	bricks exposed	20/05/2016
457_Macfarlane_701	84	Garabal	Unroofed structures	20/05/2016
457_Macfarlane_702	84	Garabal	Unroofed structures	20/05/2016
457_Macfarlane_703	84	Garabal	Unroofed structures	20/05/2016
457_Macfarlane_704	84	Garabal	Unroofed rectangular structures	20/05/2016
457_Macfarlane_705	84	Garabal	Unroofed rectangular structures	20/05/2016
457_Macfarlane_706	84	Garabal	Unroofed rectangular structures	20/05/2016
457_Macfarlane_707	84	Garabal	Unroofed rectangular structures	20/05/2016
457_Macfarlane_708	84	Garabal	Unroofed rectangular structures	20/05/2016
457_Macfarlane_709	84	Garabal	Unroofed rectangular structures	20/05/2016
457_Macfarlane_710	84	Garabal	Mini waterfall & culvert	20/05/2016
457_Macfarlane_711	84	Garabal	Heather	20/05/2016

File name	Site No.	Name	Description	Date
457_Macfarlane_712	84	Garabal	Heather	20/05/2016
457_Macfarlane_713	85	Blarstainge	Unroofed rectangular structure	3/06/2016
457_Macfarlane_714	85	Blarstainge	Unroofed rectangular structure	3/06/2016
457_Macfarlane_715	85	Blarstainge	Unroofed rectangular structure	3/06/2016
457_Macfarlane_716	85	Blarstainge	Unroofed rectangular structure	3/06/2016
457_Macfarlane_717	85	Blarstainge	Unroofed rectangular structure	3/06/2016
457_Macfarlane_718	85	Blarstainge	Unroofed rectangular structure	3/06/2016
457_Macfarlane_719	85	Blarstainge	Unroofed rectangular structure	3/06/2016
457_Macfarlane_720	86	Yle Eunlich	Promontory	3/06/2016
457_Macfarlane_721	86	Yle Eunlich	Tumbled walls	3/06/2016
457_Macfarlane_722	86	Yle Eunlich	Yew tree	3/06/2016
457_Macfarlane_723	86	Yle Eunlich	slates	3/06/2016
457_Macfarlane_724	86	Yle Eunlich	Promontory	3/06/2016
457_Macfarlane_725	86	Yle Eunlich	Tumbled walls	3/06/2016
457_Macfarlane_726	86	Yle Eunlich	Tumbled walls	3/06/2016
457_Macfarlane_727	86	Yle Eunlich	Tumbled walls	3/06/2016
457_Macfarlane_728	87	Monachoil	Tumbled walls within forestry	13/08/2016
457_Macfarlane_729	87	Monachoil	Tumbled walls within forestry	13/08/2016
457_Macfarlane_730	87	Monachoil	Tumbled walls within forestry	13/08/2016
457_Macfarlane_731	87	Monachoil	Tumbled walls within forestry	13/08/2016
457_Macfarlane_732	88	Spitle of Inverernan	Panorama	11/10/2016
457_Macfarlane_733	88	Spitle of Inverernan	Panorama	11/10/2016
457_Macfarlane_734	88	Spitle of Inverernan	Pottery from tree throw	11/10/2016
457_Macfarlane_735	88	Spitle of Inverernan	site from entrance looking W	11/10/2016
457_Macfarlane_736	88	Spitle of Inverernan	Structure with rubble	11/10/2016
457_Macfarlane_737	88	Spitle of Inverernan	Access route?	11/10/2016
457_Macfarlane_738	88	Spitle of Inverernan	structure with rubble and E most structure looking NE	11/10/2016

APPENDIX 3: Discovery and Excavation Scotland

LOCAL AUTHORITY:	Argyll and Bute
PROJECT TITLE/SITE NAME:	Arrochar Parish Survey
PROJECT CODE:	457
PARISH:	Arrochar
NAME OF CONTRIBUTOR:	Heather James
NAME OF ORGANISATION:	Northlight Heritage
TYPE(S) OF PROJECT:	Walkover survey
NMRS NO(S):	
SITE/MONUMENT TYPE(S):	Various
SIGNIFICANT FINDS:	A total of 88 sites recorded, the majority of which are new to the archaeological record including a possible 16 th century almshouse built by a Macfarlane clan chief on the banks of Loch Lomond.
NGR (2 letters, 8 or 10 figures)	Centred on NN 31500 08000 (see spreadsheet for site details)
START DATE (this season)	24/03/2016
END DATE (this season)	2/06/2016
PREVIOUS WORK (incl. DES ref.)	James, H F 2015 <i>Tarbet Isle, Loch Lomond</i> . Northlight Heritage Report No 121.
MAIN (NARRATIVE) DESCRIPTION: (May include information from other fields)	<p>Northlight Heritage was commissioned by Clan Macfarlane Worldwide to undertake a walkover survey of Arrochar parish, Argyll and Bute, Scotland, in the spring of 2016 in order to shed light on the history and archaeology of their traditional clan territory. The survey was undertaken by members of the local community, the Association of Certificated Field Archaeologists (ACFA) and students from the University of Glasgow and was led by Northlight Heritage.</p> <p>A total of 88 sites were identified, the majority of which were new. The new sites were rapidly recorded and included 22 single house/barn/byre sites, 21 single shielings or groups of shielings, 9 farmsteads consisting of groups of more than one structure, four earth or stone banks, three possible mills, three building platforms, three clearance cairns, two enclosures, two concrete platforms, two kilns, two bridges, two knocking stones and two sheepfolds. Earth banks and areas of rig and furrow were common features in the landscape, but were generally not recorded unless they were associated with a structure.</p> <p>Three probably 18th century farmsteads were identified and their place names have been revealed from 18th century historic maps and documents. Two of these farmsteads were located in Glen Douglas as Greitnein and Gartanfearn. A third farmstead at the N end of Loch Lomond was identified as Tighfurl. The remains of a possible 18th century mill at Camas nan Clais were also discovered.</p>
PROPOSED FUTURE WORK:	Excavation in Spring 2017
CAPTION(S) FOR ILLUSTRS:	1. Macfarlane Survey Project. Mature oak trees growing inside a ruined structure near Blarstainge. Shown as unroofed on 1 st edition OS map of c.

	<p>1860.</p> <p>2. Macfarlane Survey Project. Taped offset survey of early 18th century joint tenancy farm, Greitnein, Glen Douglas, deserted by the early 19th century.</p> <p>3. Macfarlane Survey Project, recording a shieling at Blarstainge, Arrochar parish.</p>
SPONSOR OR FUNDING BODY:	Clan Macfarlane Worldwide
ADDRESS OF MAIN CONTRIBUTOR:	Northlight Heritage, Studio 406, South Block, 64 Osborne St, Glasgow G1 5QH
EMAIL ADDRESS:	hjames@yorkat.co.uk
ARCHIVE LOCATION (intended/deposited)	NMRS (Intended)

APPENDIX 4: Results of Historical Research by Alistair McIntyre

List of Sources

Abs. Argyll Sasines Campbell H (ed) 1934
 Abst of Sale of McFarlane Estates, 1784
Census 1841 - 1901
Colquhoun Estate Records
 Fraser 1869 *Chiefs of Colquhoun*
 Index Commissariat Records of Glasgow 1901
 MacFarlane Muniments
 OPR Old Parish registers
 Valuation Rolls

INVERGROIN

- 1658 Sasine of an annual rent of £300 to be uplifted from....(various properties, including- Innergryan), (Abs. Argyll Sasines).
 1673 Donald McFarlane alias McEan-Vane in Innergraine (Index to Commissariat Records of Glasgow: SRS,1901)
 1736 George McFarlan , Taxsman of Invergryan, son to Dougall McFarlan of Tullichintaul (Sasine of various properties).. to Walter MacFarlane of that ilk. (Abs. Argyll Sasines)
 1757 Dugald McFarlane of Auchrossan (Cowal), drover in Invergreune, referred to as (also) being in possession of the lands of Conaglen-more, Conaglen-beg, Prestellach and Culdenoch (all Colquhoun lands in and around Glen Douglas (Colquhoun Estate Records).

N.B. It may significant that it was a drover who had this, along with the other properties. As well as suggesting a rationalisation of farming practice in the area, it should be noted that Invergroin lay on the String Road, connecting Arrochar to Glen Douglas and beyond. This was a droving route, and there is evidence that around this time, drovers were taking leases of land that lay along their favoured routes (e.g. see Stewart: The Settlements of Western Perthshire(1990) p.107 "By 1735, drovers from Loch Lomondside were renting the grazings of Lechrone..." (This lies along the droving route east of Inverarnan, on the approaches to Balquhidder))

- 1784 Sale of MacFarlane estates- Invergroin is listed under same heading as Choilcorran, Gartanfaired and Greitnein...rental(as one) - £88-4-9 1/2d
 1800 Marjory MacFarlane, servant in Invergroin, married Peter Campbell, Inverbeg(OPR)
 1805-1808 William and Duncan born and baptised, sons of Duncan McCallum and spouse Janet Grieve- note that the family was at nearby Croitnein by 1810, where another child was reg.(OPR)
 1809 Andrew, son of Duncan and Margaret McGregor, b.+b.
 1837 Donald Campbell, Shepherd, Invergroin, marr. Agnes McNiven, Hill of Camstradden (OPR)
 1841 Malcolm McCallum (45) Agric. Lab., Sarah (wife), 6 children (Census 1841)
 1851 Archie Cameron (35) Shepherd, b. Morven P., Mary (27), Mary, infant da. (Census 1851)
 1851 Advert, Dumbarton Herald "To let, stock farms of Invergroin and Inveruglas, presently possessed by Messrs W and A McNiven.....Apply Luss Estates Factor

N.B. "Inveruglas" almost certainly refers here to what was termed Lower or Nether Inveruglas, which comprised the land to the north side of Douglas Water, opposite Inverbeg, as opposed to Inveruglas where the Loch Sloy power station is located. The terms Lower/Nether Inveruglas were becoming obsolete by the early 19th C.

- 1871 John Douglas (50) Shepherd, b. Dull, Perthshire, wife, da., Dugald Cameron, Shepherd (Census 1871)
 1881 Donald McPherson (40), Shepherd, b. Tobermory, Mary (40), 5 Children (Census 1881)
 1883, 1887 John McWilliam, Farmer, tenant (Valuation Rolls)
 1891 John Taylor (35), Farmer, b. Bonhill P., wife Helen Taylor (32), da., Annie Callaghan (16), dom. servt., William McAlpine (21), shepherd (Census 1891)
 1901 Taylors still present (Census 1901)
 1910 Walter McFarlane, Farmer, Bowling, Tenant;Occupier Dugald Campbell, Shepherd(Valuation Rolls)

1919- 1950's David Christie, Farmer, Tenant; Occupier various shepherds, usually married.
1960's- c. 1990's Still occupied by shepherds; turnover of occupiers frequent. Into the Millenium, house demolished, and new house built on site, with retired farmer as resident.

COILECHORRAN

- 1501 Robert Colquhoun of Camstradach enters into a bond of friendship with Duncan McConachie in defence of Duncan's possession of lands of Cullochquhoun and Morlagang (Fraser 1869)
1514 Renunciation of an earlier wadset charter in favour of Dugall McCoull, with reference to Culloch-pirrie(?) and Murlagan. In 1514 it is now referred to as Calloch quhere.(Transcript of 1542 document associated with High Morlaggan project).
1621 Sasine of the 40/- land of Calliquhornig. Lordship of Arrochar,Parish of Luss to Dugall MacFarlane in Gawnan (near Ardgartan), (Abs. Argl Sasines).
1666 Sasine of 40/- land of Tullichintaul.....witnesses include Walter MacFarlane in Kellichollan(Abs. Argyll Sasines)
1673 Sasines of...various lands, including Gortanferne, Murligan, etc....one of the witnesses is Walter MacFarlane of Pollicharn

N.B. It is suggested that this could be a mis-transcription of "Collicharn" - the 1934 printed version has a number of mis-transcriptions, e.g. "Conaglen" (Glen Douglas) is rendered in one instance as "Lonaglen". Note however that the same sasine also refers to Pollichroe/ Bollichroe, which is on the east side of Loch Lomond, opposite Ardvorlich.

- 1692 Ref to Walter MacFarlane in Collechorane (Abs. Argyll Sasines)
1699 Sasine of £40 land of Arrochar-McGilchrist...witnesses inc. Walter MacFarlane in Kellichoran(Abs. Argyll Sasines)
1708 Robert MacFarlane in Killhoran, with 2 wadders- Rental £74 (MacFarlane Muniments no. 49)
1784 At sale of MacFarlane of MacFarlane estates, Choilcorran is bracketed along with Invergroin, Gartanfaired and Greitnein as one- Rental £88-4-9 1/2d
1815 John McGibbon had 1,200 black cattle on Tullich, Coillechoran, Tynalarich and Murlaggan pasture (per Ian McEachern, Luss)
1851 Duncan McColl (30) Ag. Lab. b. Killin P., Catherine (34), Christine Campbell (66) widow, mother-in-law, John (7), nephew, b. Callander (Census 1851)
1881 Donald Campbell (75) Ploughman, b. Glen Dochart, Catherine McColl (68), sister, widow, dairymaid, Janet Campbell (6), boarder, b. Kilmaronock (Census 1881).
1891 No mention in the Census of that year, and the site was presumably abandoned. Several sycamore trees and piles of stone mark the site. In the 1960's, with the development of the west end of Glen Douglas as an Admiralty ammunition store, a number of habitations were demolished, including Tullich Farm. A "new" Tullich was built as a Dorrans-type bungalow on or close to the site of Coilechorran.

GORTANFERNE

- 1663 Duncan McFarlane, Gartanfairnn, Parish of Luss (Index Commissariat Records of Glasgow, 1901)(N.B. Referred to as Luss Parish, but Arrochar Parish was in fact by then in existence)
1673 Sasine of 2- merk land of Gortanferne, along with lands of Craittinean, Murligan, Ardvich and Stuknacloch to Alexander Colquhoun, on a wadset charter, by John McFarlane of Arrochar, price- 3,000 merks. One witness was Donald McPhun, Gortanferne. (Abst Argyll Sasines)
1708 Duncan McFarlane, major, in Gartanferne with a wadder- rental £18; Duncan McFarlane, minor, in Gartanferne , with a wadder- rental- £18 (McFarlane Muniments, no.49)
1765 John McFarlane in Gartanferne
1773 Birth/Baptism of Janet, da to James and Elizabeth McQueen at Gortanfarm (OPR's)
1784 Mention of Gartanfaired, which is bracketed along with along with Invergroin,Choilcorran and Greitnein as one- rental £88-4-9 1/2d (Abst of Sale of McFarlane Estates, 1784)

N.B. This settlement does not appear to feature in later OPR entries. However, the fact that it is not mentioned does not necessarily mean it was uninhabited. Nevertheless, it does not feature in census returns from 1841 onwards.

CROIT-NEIN

- 1643 John Campbell of Craitnoyne was among witnesses to a charter of lands of Arrochar McGilchrist(Abst Argyll Sasines)
- 1673 Sasine of the lands of Craittinean, along with other lands (see entry under Gortanferne). Witnesses include John McWattie in Craittinean (Abst Argyll Sasines)
- 1708 Robert McFarlane in Critenan, the 2 parts of the toun, with 2 wadders- rental £26-15/-; George McFarlane there., rental £15-13/-
- N.B. : Malcolm McFarlane in Stucknetibert , with a wadder -rental £37-12/- is also listed under the heading of Critenan- is this a mistake?) (MacFarlane Muniments no.49)
- 1784 Listed as Greitnein, and bracketed along with Invergroin, Coilcorran and Gortanfern as one- rental £88- 4- 9 1/2d (Abst of Sale of McFarlane Estates, 1784).
- 1810 Duncan McCallum and spouse Janet Grieve had a son, Hugh, born 18 Aug, bap. 22 Aug. (OPR'S)

N.B. This would appear to be the same couple previously resident at Invergroin. There appears to be no further reference to Croit-nein in the OPR's, although this does not necessarily mean that no-one resided there. However, there is no mention in the 1841 census or later returns.

APPENDIX 5 Results of Historical Research by Rhona Macfarlane

ROBERT MACFARLAN (1865-19--)

Born in 1865, and the youngest son of Parlan and Janet MacFarlan, Robert also had a distinguished career, both in farming and in public service. Robert took up the tenancy of Tullich farm, in Glen Douglas, about 1886. Tullich, formerly known as Tullichintaul, was located at the north-western extremity of what used to be referred to as the Lordship of Luss. In the 16th century, it was owned by the Colquhouns of Luss, but around the time of the Battle of Glen Fruin in 1603, it was feued to the Macfarlanes, possibly as part of a deal which helped bring to an end the deadly feud previously existing between the Chiefs of Colquhoun and MacFarlane. As such, the property was for long associated with the MacFarlanes. In addition to the farm, Robert also had a house at Arrochar, Dail Dairach. With the coming of the hush-hush Admiralty scheme to Glen Douglas in the early 1960's, the school closed its doors in 1965, and was demolished five years later. Tullich Farm was likewise dismantled, and a replacement built further down the Glen. (The Macfarlanes of Faslane, unpublished Mss. Rhona Macfarlane).

APPENDIX 6: Glossary

glen: A long deep valley, narrower than a strath.

parish: A unit of land having its own church and minister. In Scotland these were generally established in the 12th century, but could be based on much older land units.

almshouse: Generally a building set up as a dwelling for the elderly, a hospital or to provide 'hospitality' for travellers. Set up as an act of charity.

byre: cow shed.

crucks: A pair of curved timbers used to support the roof of a building, hence 'cruck-framed building'. Vernacular houses would have had one, two or perhaps three pairs of crucks.

cruck-slots: Vertical slots within the interior stone wall face of a building where the crucks sat. Before walls were made of stone, the crucks would have sat on the ground sometimes on padstones.

clearance cairn: An irregular pile of stones collected from fields, to make cultivation easier.

drove road: A road or track along which cattle are driven to the 'tryst' (meeting place where cattle are collected together) or market.

farmstead: A farm and its buildings.

ferm-toun: A farm and its buildings, farming village, often with joint tenants.

kiln: Circular structure with a fire, flue and bowl, used to dry grain before it is stored. Sometimes the kiln sat within a kiln-barn. (see <https://www.youtube.com/watch?v=jW3dXb4ces>)

knocking stone: Hollow in a large stone used with a pounding stone to take husks off barley in order to make broth. A small amount of water is added. (see http://www.dsl.ac.uk/entry/snd/knock_v1_n1)

lade: A channel constructed to carry the swift current of water that drives a mill wheel.

mill: Cereal mill. Horizontal mills or click mills were built over streams. Vertical (over shot or undershot) mills utilised a lade to bring water from a nearby stream.

revetment: A retaining wall supporting an earth bank or terrace.

rig and furrow: (short for ridge and furrow) A pattern of parallel ridges in open fields which are the result of a system of ploughing. Rigs were re-assigned to tenants each year by the 'run-rig' system. See also 'lazy beds' which form similar patterns, but are dug by a spade which is more suited to steep Scottish slopes.

shieling: A roughly-built hut made of local materials used when accompanying cattle to the hills to graze summer pasture.

Strath: Large river valley, wide and shallow, bounded by hills.

tenancy farm: Farms rented from a 'tacksman' who often paid rent for several farms to the local clan chief. The tacksman was often a junior member of the clan or close relative of the clan chief. As the population rose and landowners sought to make more money, the farms were let to more than one family and became joint-tenancy farms.

township: A unit of land below the parish which might support a small community.

tree throw: A hollow in the ground formed when a tree is blown over. These can be bowl-shaped if the stump is dug out or banana-shaped if the stump rots *in situ*.